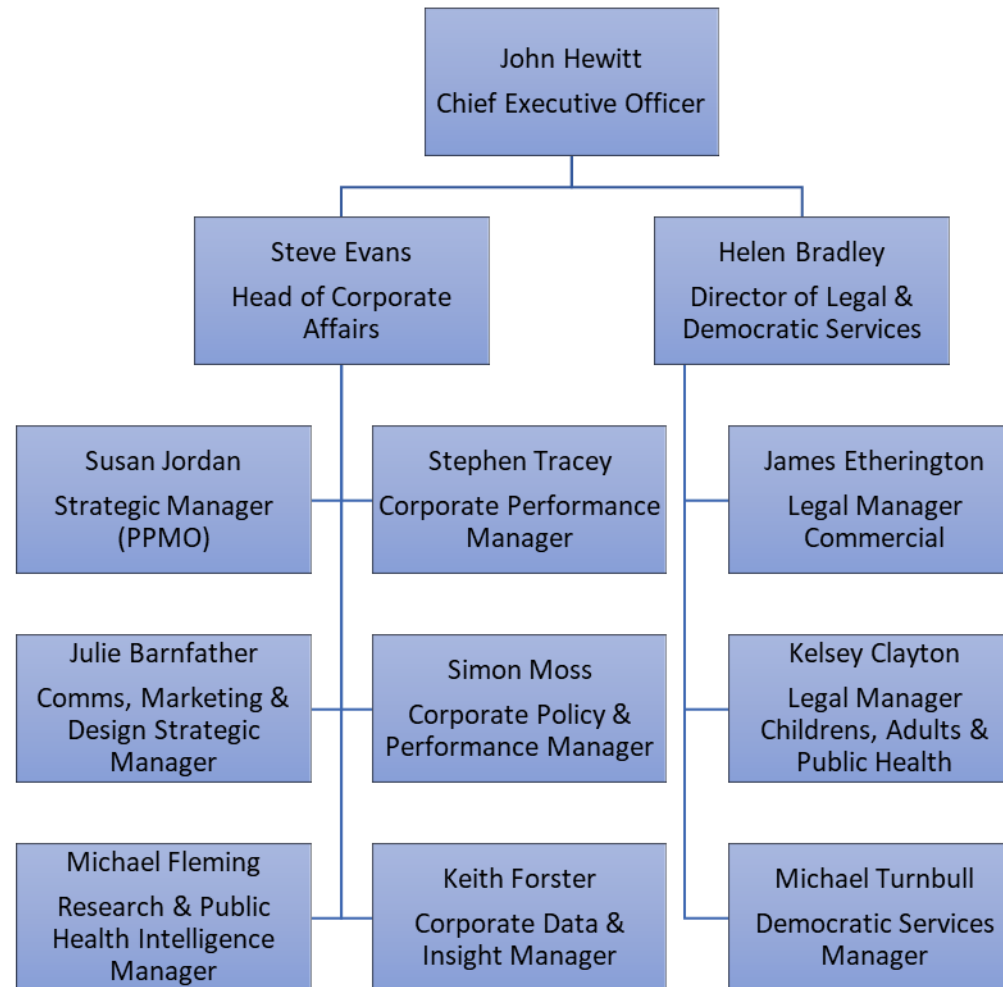


Chief Executive's Service Structure



Text version of Chief Executive's Service Structure

- John Hewitt – Chief Executive Officer
 - Steve Evans – Head of Corporate Affairs
 - Susan Jordan, Strategic Manager (PPMO)
 - Stephen Tracey, Corporate Equality & Strategy Manager
 - Julie Barnfather, Comms, Marketing & Design Strategic Manager
 - Simon Moss, Corporate Policy & Performance Manager
 - Michael Fleming, Research & Public Health Intelligence Manager
 - Keith Forster, Corporate Data & Insight Manager
 - Helen Bradley – Director of Legal & Democratic Services
 - James Etherington, Legal Manager Commercial
 - Kelsey Clayton, Legal Manager – Childrens, Adults & Public Health
 - Michael Turnbull, Democratic Services Manager