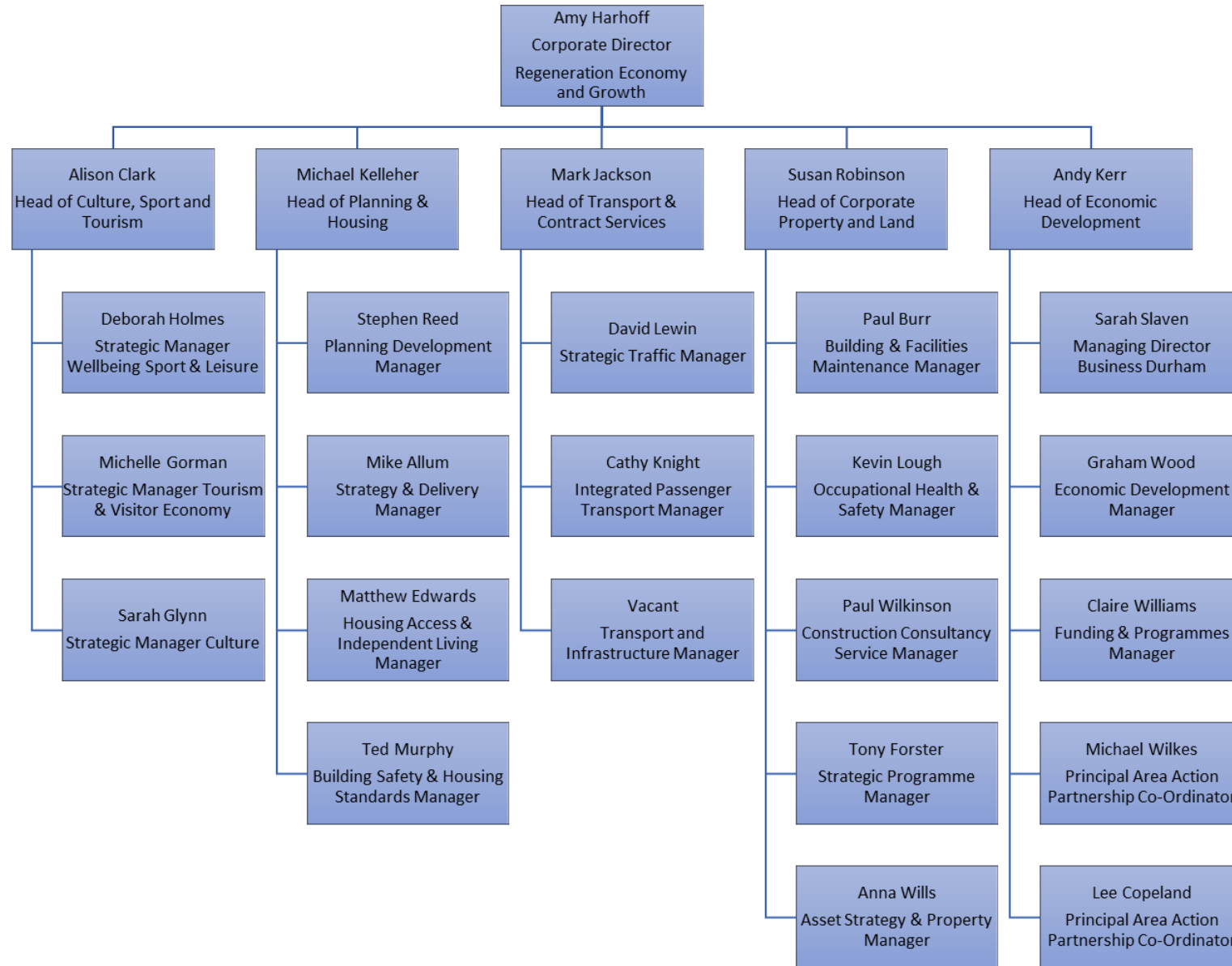


Regeneration, Economy and Growth Structure



Text version of Regeneration, Economy and Growth Structure

- Amy Harhoff - Corporate Director Regeneration, Economy and Growth
 - Alison Clark, Head of Culture, Sport and Tourism
 - Deborah Holmes, Strategic Manager Wellbeing Sport & Leisure
 - Michelle Gorman, Strategic Manager Tourism & Visitor Economy
 - Sarah Glynn, Strategic Manager Culture
 - Michael Kelleher, Head of Planning and Housing
 - Stephen Reed, Planning Development Manager
 - Mike Allum, Strategy & Delivery Manager
 - Matthew Edwards, Housing Access & Independent Living Manager
 - Ted Murphy, Building Safety & Housing Standards Manager
 - Mark Jackson, Head of Transport and Contract Services
 - David Lewin, Strategic Traffic Manager
 - Cathy Knight, Integrated Passenger Transport Manager
 - Vacant, Transport and Infrastructure Manager
 - Susan Robinson, Head of Corporate Property and Land
 - Paul Burr, Building & Facilities Maintenance Manager
 - Kevin Lough, Occupational Health & Safety Manager
 - Paul Wilkinson, Construction Consultancy Service Manager
 - Tony Forster, Strategic Programme Manager
 - Anna Wills, Asset Strategy & Property Manager
 - Andy Kerr, Head of Economic Development
 - Sarah Slaven, Managing Director Business Durham
 - Graham Wood, Economic Development Manager
 - Claire Williams, Funding & Programmes Manager
 - Michael Wilkes, Principal Area Action Partnership Co-ordinator
 - Lee Copeland, Principal Area Action Partnership Co-ordinator