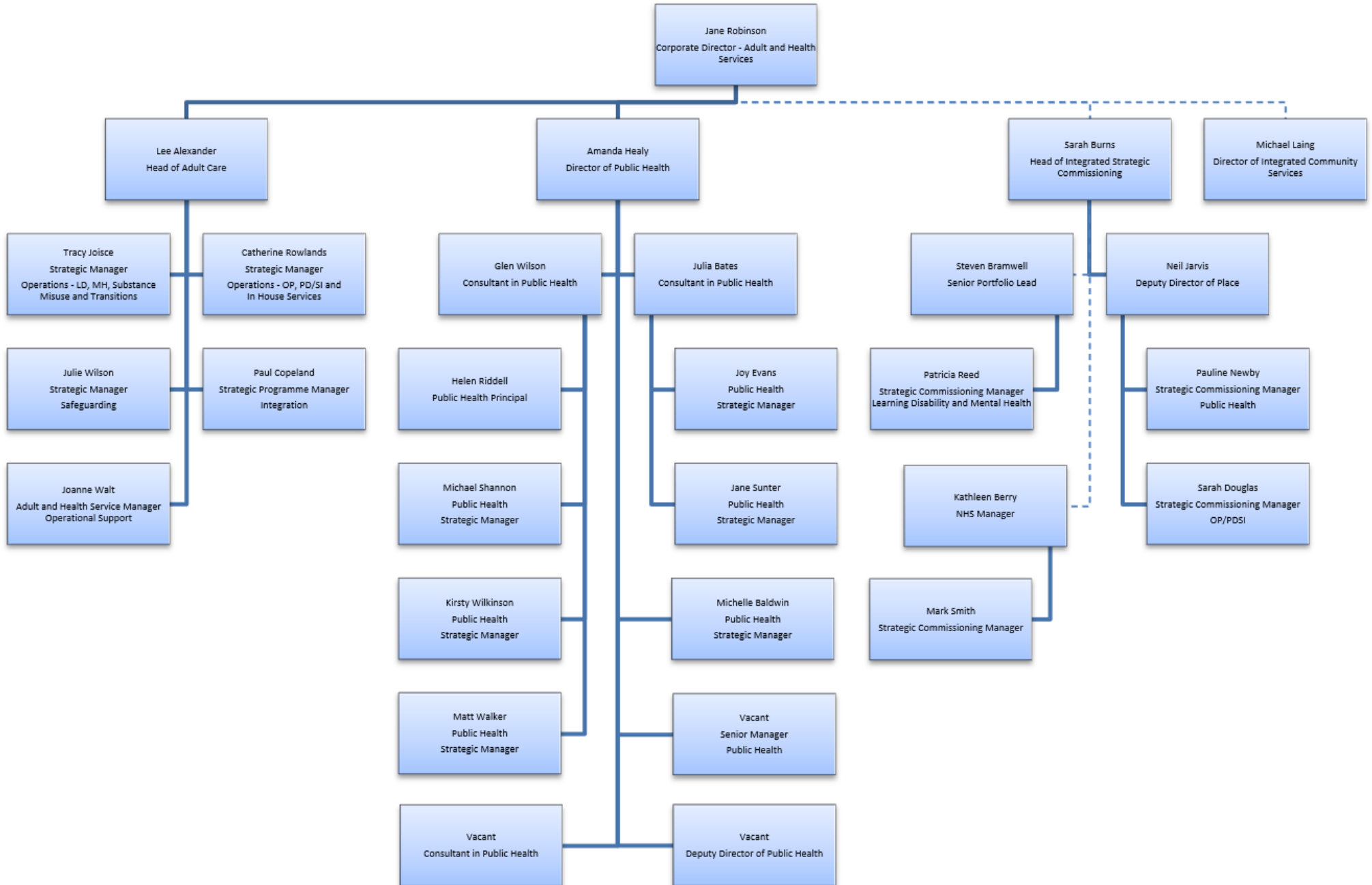


# Adult and Health Services Management Structure



## Text version of Adult and Health Services Structure

- Jane Robinson - Corporate Director Adult and Health Services
  - Michael Laing – Director of Integrated Community Services
  - Lee Alexander, Head of Adult Care
    - Tracy Joice – Strategic Manager Operations LD/MH/Substance Misuse and Transitions
    - Catherine Rowlands – Strategic Manager Operations OP/PDSI and in house services
    - Julie Wilson – Strategic Manager Safeguarding
    - Paul Copeland – Strategic Programme Manager Integration
    - Joanne Walt – Adult and Health Service Manager Operational Support
  - Amanda Healy, Director of Public Health
    - Glen Wilson – Consultant in Public Health
      - Helen Riddell – Public Health Principal
      - Michael Shannon – Public Health Strategic Manager
      - Kirsty Wilkinson – Public Health Strategic Manager
      - Matt Walker – Public Health Strategic Manager
    - Julia Bates – Consultant in Public Health
      - Joy Evans – Public Health Strategic Manager
      - Jane Sunter – Public Health Strategic Manager
    - Michelle Baldwin – Public Health Strategic Manager
    - Vacant - Senior Manager Public Health
    - Vacant - Deputy Director of Public Health
    - Vacant – Consultant in Public Health
  - Sarah Burns, Head of Integrated Strategic Commissioning
    - Neil Jarvis – Deputy Director of Place
      - Sarah Douglas – Strategic Commissioning Manager OP/PDSI
      - Pauline Newby – Strategic Commissioning Manager Public Health
    - Steve Bramwell – Senior Portfolio Lead
      - Patricia Reed – Strategic Commissioning Manager Learning Disability and Mental Health
    - Kathleen Berry – NHS Manager
      - Mark Smith – Strategic Commissioning Manager