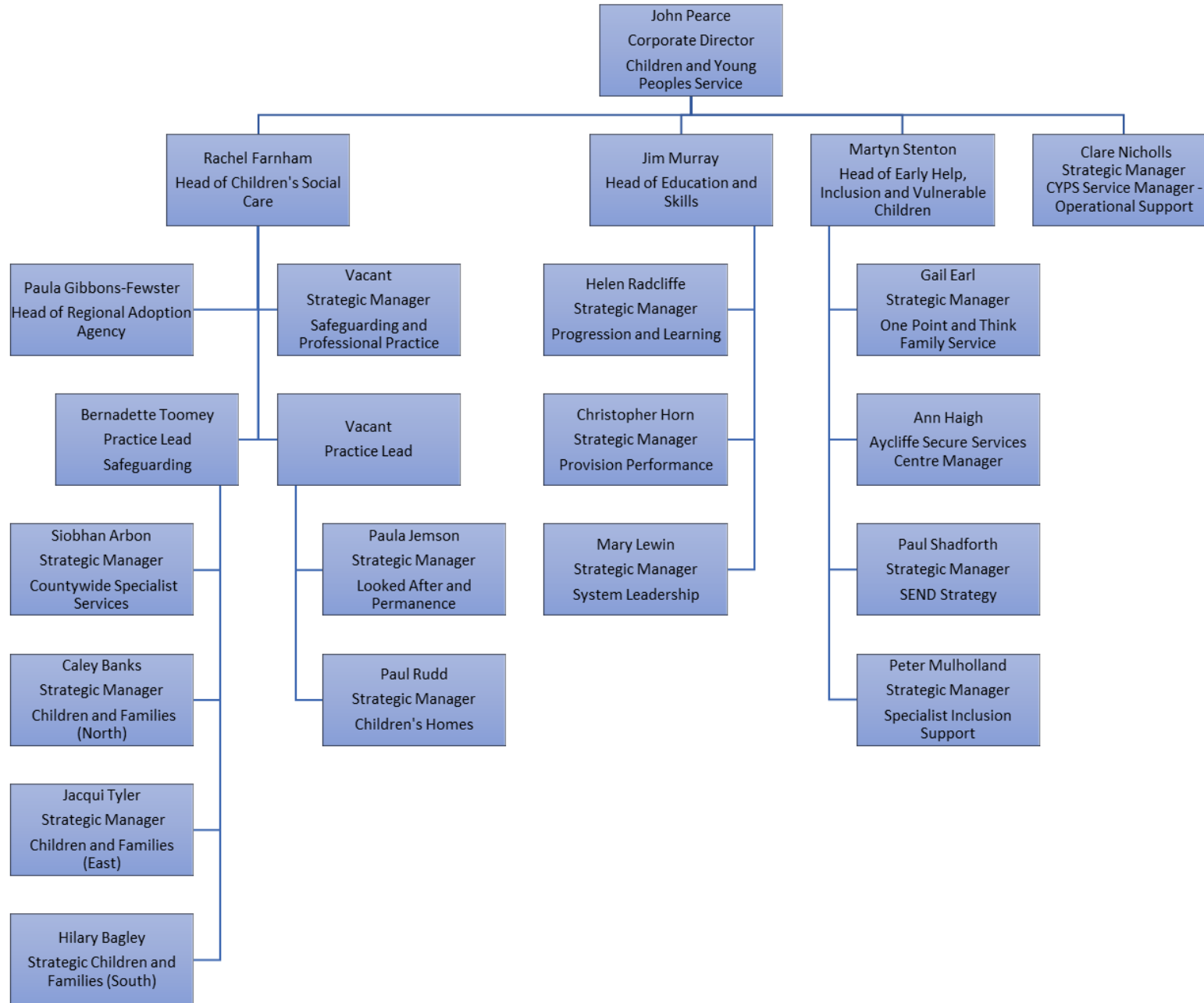


Children and Young Peoples Services Management Structure



Text version of Children and Young People Services Structure

- John Pearce - Corporate Director Children and Young Peoples Services
 - Rachel Farnham, Head of Children's Social Care
 - Paula Gibbons-Fewster – Head of Regional Adoption Agency
 - Vacant – Strategic Manager Safeguarding and Professional Practice
 - Bernadette Toomey – Practice Lead Safeguarding
 - Siobhan Arbon – Strategic Manager First Contact and Countrywide Services
 - Jac Tyler – Strategic Manager Children and Families (East)
 - Caley Banks – Strategic Manager Children and Families (North)
 - Hilary Bagley - Strategic Manager Children and Families (South)
 - Vacant – Practice Lead
 - Paula Jemson – Strategic Manager Looked After and Permanence
 - Paul Rudd – Strategic Manager Children's Homes
 - Jim Murray, Head of Education and Skills
 - Helen Radcliffe - Strategic Manager Progression and Learning
 - Christopher Horn – Strategic Manager Provision
 - Mary Lewin – Strategic Manager System Leadership
 - Martyn Stenton, Head of Early Help, Inclusion and Vulnerable Children
 - Gail Earl – Strategic Manager One Point and Think Family Service
 - Ann Haigh – Aycliffe Secure Services Centre Manager
 - Paul Shadforth – SEND Looked After and Vulnerable Groups
 - Peter Mulholland – Strategic Manager Specialist Inclusion Support
 - Clare Nicholls – Strategic Manager CYPs Service Manager Operational Support