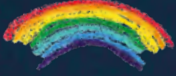


# DURHAM

Winter 2021

[www.durham.gov.uk](http://www.durham.gov.uk)



# County News

**Lumiere 2021**

**Ready for winter**

Service updates and festive fun

**Towns and villages**

Focus on Consett

**Durham**  
County Council





# Welcome to the winter edition of Durham County News

As we move towards the winter months, we have so much to look forward to in County Durham.

Our inclusion on the longlist for UK City of Culture 2025 makes it such an exciting time for the county. The title would bring transformational social and economic benefits to the entire region. You can read more about the Durham 2025 campaign and how communities across the county can get involved on pages 8 and 9.

This month also marks the welcome return of Lumiere, the UK's leading light festival. On pages 15 to 18, you can read about some of the highlights of this year's festival, as well as our top tips for those planning to visit.

I'm sure many of you are already starting to prepare for Christmas, too. As we approach the festive season, there are lots of events that you can look forward to. Don't miss our What's On guide from pages 25 to 30, featuring the return of pantomimes to Gala Durham and Empire Consett.

You can also find the most up to date information on council services and closures over Christmas on page 22, alongside a list of what you can recycle over the festive period on page 24. There's also a winter wellness guide on pages 20 and 21 to help you stay well this winter and look after yourself and your loved ones.

I would like to wish you all a very merry Christmas and a happy and safe New Year.



Councillor Amanda Hopgood, Leader of the Council

*Amanda Hopgood*

## Inside...

Pages 4-7  
**News**



Pages 8-9  
**UK City of Culture bid**



Page 10  
**Improving Horden Together**



Page 11  
**Business news**

Pages 12-13  
**Towns and villages**



Page 14  
**Winter highways services**

Pages 15-18  
**Lumiere**



Page 19  
**Wellbeing**



Pages 20-21  
**Stay well this winter**

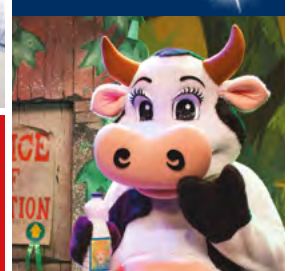


Page 22  
**Christmas opening times**



Pages 23-24  
**Green living and climate change**

Pages 25-30  
**What's on**



Front cover: Keyframes, a Lumiere light installation by Groupe Laps. Photo by Matthew Andrews.

If you live in the Durham County Council area and haven't received a copy of Durham County News at your home address, please contact us.

To contact the editorial team, call 03000 268 059 or email [durhamcountynews@durham.gov.uk](mailto:durhamcountynews@durham.gov.uk)



**Look out for extra content...** You can now view extra content wherever you see this icon by going to [www.durham.gov.uk/dcn](http://www.durham.gov.uk/dcn)



Durham County News is written and designed by Durham County Council, printed by Acorn Web Offset Ltd and distributed by Smart Distribution Services Ltd and Royal Mail. It costs 16p a copy. When you have finished with this magazine, please recycle it.

# Celebrate Lunar New Year in Durham City

The Year of the Tiger will be welcomed in Durham with a programme of free family events.

The celebrations will begin with activities in the Town Hall from 10.30am on Saturday 5 February, and a traditional Chinese lion dance and procession from 12.30pm.

The lion will be greeted by the Mayor of Durham City in Millennium Place, before the procession heads into the Market Place, on through Prince Bishops Shopping Centre and finishes at Millburngate/Riverwalk.

Events and activities will continue throughout the day, with highlights including free dance and music demonstrations by schoolchildren from across County Durham.

The youngsters have been working with students from Durham University, representatives of the Durham Chinese School and the Chinese Students' and Scholars' Association to perfect their routines.

Other activities will include children's storytelling sessions at Clayport Library; traditional craft and calligraphy activities in the Town Hall; the chance to learn Mandarin; and a demonstration of a traditional tea ceremony. All activities are free of charge.

The festival programme has been developed by us in partnership with Durham Markets, Durham Chinese School and Durham University.



Visit [www.thisisdurham.com/lunar](http://www.thisisdurham.com/lunar) to find out more.





## Contact us:



Report Apply Book Pay Comment

## Save time do it online

Visit our website  
to use online services  
24 hours a day  
7 days a week

[www.durham.gov.uk/  
doitonline](http://www.durham.gov.uk/doitonline)

If you need to phone us, call

### Customer Services

**03000 26 0000**

**8.30am – 5pm** (Monday-Thursday)

**8.30am – 4.30pm** (Friday)

Out of hours emergency service  
available.

For social care and independent  
living enquiries or adult and  
children's welfare issues:

### Social Care Direct/Children's First Contact Service

**03000 26 79 79**



[@DurhamCouncil](https://twitter.com/DurhamCouncil)



[/durhamcouncil](https://www.facebook.com/durhamcouncil)



[linkedin.com/company/  
durham-county-council](https://www.linkedin.com/company/durham-county-council)



[/DurhamCouncil](https://www.youtube.com/DurhamCouncil)



[/durham\\_county\\_council](https://www.instagram.com/durham_county_council)

Please ask us if you would like this document  
summarised in another language or format:

Braille, Audio, AAA Large print.

[durhamcountynews@durham.gov.uk](mailto:durhamcountynews@durham.gov.uk)  
**03000 268 059**



## New leisure centre sites agreed

The locations of two new leisure centres have been confirmed.

The new facilities will be built on the site of the former civic centre in Chester-le-Street and at the existing Woodhouse Close leisure centre site in Bishop Auckland.

The developments are part of our Leisure Transformation Plan, which will see a £78 million investment in leisure facilities across the county.

New soft play and ten-pin bowling facilities, improved opportunities for group exercise, pool upgrades and the introduction of wellness suites are among the improvements set to be made at some of our centres from the beginning of next year.

Further work is set to take place before the final location of a new leisure centre in Seaham is agreed.

## Libraries for you – have your say

Do you use our  
library services?

We're looking for  
feedback on the  
services we provide  
so we can make

informed decisions on changes to our provision. We want to hear your opinions, which we'll be collecting through an online survey. You'll also be able to watch films about what we will be doing and why, so please visit [www.durham.gov.uk/consultation](http://www.durham.gov.uk/consultation) to find out more.



You will also be able to pick up a survey at your local library and call us on **03000 260 260** if you need help filling it in.

## Trustees back DLI proposals

The trustees of an historic military collection have welcomed moves that could see exhibits and artefacts displayed at a new cultural and visitor destination in Durham.

Further development work is to be carried out into proposals to bring the former Durham Light Infantry (DLI) Museum back into use as a gallery and exhibition space with a café.

The plans would include significant space for the display of items from the DLI Collection and Archive, as well as the creation of a peace and contemplation garden.

The facility would also provide space for exhibits from the council's other collections to be put on display.

Alongside the new history centre, it would mean two new sites offering access to the DLI Collection and



further scope for the telling of stories reflecting the county's military history.

Colonel Ted Shields MBE, Chair of the DLI Trustees, said: *"If these proposals go forward, the DLI collection will continue to be curated to the highest professional standards and will be that much more accessible, not just to the people of the county and the North East, but around the world too through digital programmes."*



County Durham and Darlington  
Fire and Rescue Service

## Do you want to be an On Call Firefighter?

You **must live or work** within a **5 minute response time** from one of our On Call stations

To find out more visit our website:

**ddf.fire.gov.uk**

*Think you've got what it takes?*

Contact our On-Call Liaison  
officer via email on:  
**jrobinson@ddf.fire.gov.uk**





## Empowerment against abuse

A new campaign launching next month will aim to help people speak up in order to stop abuse.

Led by the Durham Safeguarding Adults Partnership, the new initiative will see health and social care organisations working with the police to help keep people safe from neglect and abuse. Find out more at [www.safeguardingdurhamadults.info](http://www.safeguardingdurhamadults.info)

You can report abuse or neglect to our Social Care Direct team 24 hours a day on **03000 267 979**.



Harbour staff supporting PRIDE Campaign.

## Domestic abuse support

Did you know that one in four women and one in six men in the UK will suffer domestic abuse at some point in their lives\*?

Domestic abuse can affect any of us, but help is at hand. Harbour Support Services offers advice, guidance and support to people in County Durham experiencing abuse as well as those displaying abusive behaviours.

A live chat service is available at [www.myharbour.org.uk](http://www.myharbour.org.uk) or you can call the 24-hour helpline on **03000 20 25 25**.

\*(Source: Crime in England and Wales 04/05 report)

Always call **999** if you or others are at immediate risk, press **55** when prompted if you can't speak.



## Holocaust Memorial Day

Holocaust Memorial Day will once again be marked by people across County Durham during a special online event.

The annual day of remembrance and reflection coincides with the anniversary of the liberation of Auschwitz-Birkenau, the largest Nazi concentration and extermination camp.

Falling on **Thursday 27 January 2022**, it is a chance to remember the millions lost during the Holocaust, and Nazi persecution, as well as in genocides in Cambodia, Rwanda, Bosnia and Darfur.

To join our mailing list or find out more, visit [www.durham.gov.uk/hmd](http://www.durham.gov.uk/hmd)

## Apply for a school place

Will your child turn five on or between 1 September 2022 and 31 August 2023?

If so, you will need to complete an application form telling us which infant, junior or primary school you would like them to attend.

Apply online at [www.durham.gov.uk/schooladmissions](http://www.durham.gov.uk/schooladmissions) or call **03000 265 896** to request a paper copy.

Applications close at midnight on Saturday 15 January 2022.





## Face-to-face support to find work

**People looking for support to get back into work can once again speak to an advisor face-to-face.**

Our Employability Durham team is now back out and about after 18 months of working online during the pandemic.

Residents aged over 25 can benefit from personalised advice and guidance from a dedicated advisor, both digitally and face-to-face.

If you need help to navigate the ever-changing jobs market, visit [www.durham.gov.uk/employability](http://www.durham.gov.uk/employability), email [employability@durham.gov.uk](mailto:employability@durham.gov.uk) or call 03000 262 009.



## Kickstarting careers

**More than 50 new apprentices started their careers with the council this autumn.**

We now have a total of 237 apprentices learning valuable skills and gaining experience in a wide range of fields, from business administration and financial management to civil engineering and joinery.

As well as providing on-the-job experience and training, apprenticeships provide a salary and a nationally recognised qualification. Find out more about our apprentice opportunities at [www.durham.gov.uk/apprenticeships](http://www.durham.gov.uk/apprenticeships)

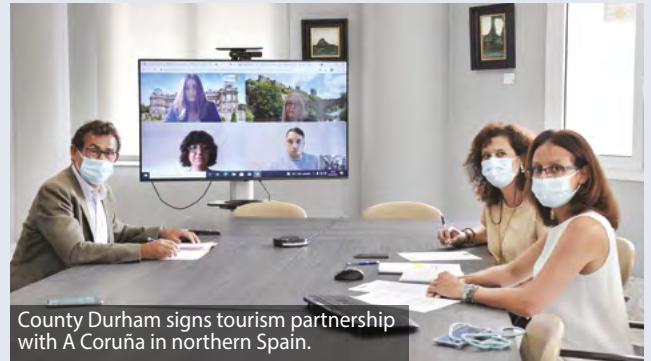
## New Elvet bridge reopens

**A key city centre bridge has reopened following a full refurbishment.**

Durham's New Elvet Bridge closed in July 2020 for essential works, including extensive repairs to ensure the bridge remains structurally sound.

Additional work to install a concrete protection system, improved water proofing and drainage works will provide extra protection for years to come.

Diversions which were introduced to reduce congestion and manage traffic flow during the bridge's closure, including the bus gate at Quarryheads roundabout, have now been removed.



County Durham signs tourism partnership with A Coruña in northern Spain.

## Spanish tourism partnership

**A scenic County Durham walking route is at the heart of a new tourism agreement with a local council in Spain.**

We are working with A Coruña Provincial Council, in the northwest of the country, to try and attract more visitors to both areas, boost our economies and support the recovery from the pandemic.

The partnership comes as a walking route from Finchale Abbey to Durham Cathedral, and beyond to Escomb Church, south of Bishop Auckland, is officially recognised as part of the Camino Inglés (the English Way), which forms part of the famous Camino de Santiago pilgrimage route.

The partnership will see both councils working to promote the English Way and other pilgrimage routes, including the Northern Saints Trails – six historic walking routes across North East England.

Find out more at [www.caminodesantiago.gal](http://www.caminodesantiago.gal) or [www.northernstalks.com](http://www.northernstalks.com)





# County Durham – No Ordinary County

County Durham has made it to the next stage in the **UK City of Culture 2025** competition. Securing this title would bring transformational social and economic benefits to the entire region. Here we share more about the Durham 2025 campaign and how communities across the county can get involved.

County Durham’s rich and diverse cultural offer, stunning landscapes and spirit of innovation have long been a source of pride and inspiration in the North East and around the world.



Now we have an opportunity to build on this reputation and take centre stage in the national cultural arena. After submitting an expression of interest to be UK City of Culture 2025 in July, last month we received the news that County Durham is among the eight places to have been longlisted.

This year, for the first time, the Department for Digital Culture Media and Sport allowed groups of towns to work together to submit joint bids, which resulted in a record-breaking 20 entries.

The Durham 2025 bid aims to secure the title for both county and city and is a chance to showcase the wealth of talent and potential that exists in our communities.

The campaign is being spearheaded by the council and principal partners Durham University and Culture Durham – a partnership of organisations united by their belief in the power of culture to transform lives.

## Far reaching benefits

The benefits UK City of Culture status would bring cannot be overstated. Not only will it allow us to stage even more events and offer new creative opportunities, but it will increase tourism and support the region’s recovery from the impact of the coronavirus pandemic.

Hull was UK City of Culture in 2017 and this was directly responsible for almost £90 million of investment. Coventry, meanwhile, has secured more than £100,000 million to support cultural projects since being named UK City of Culture 2021.

The National Lottery Heritage Fund has already committed to provide a £3 million award to 2025’s winning location. And with County Durham’s track record of securing investment and staging world class events such as Lumiere and Kynren, the county is in a strong position to maximise these benefits for the entire region and enhance our vibrant and inclusive cultural offer.

The longlisting announcement follows news the BBC plans to invest £25 million in the North East over the next five years. Arts Council England has also named County Durham as one of its priority places for investment as part of its three-year delivery programme.





## Keep the momentum going

Tony Harrington, chair of Culture Durham, said: *"We are absolutely thrilled County Durham has made it to the next stage of the UK City of Culture 2025 competition."*

*"Our bid is on behalf of the whole of County Durham and we believe it is our diverse heritage, landscapes and communities that make it so special."*

*"Our aim is to deliver an inclusive cultural programme that resonates with our communities and reflects our desire to innovate, inspire and grow. Crucially, we want the people of County Durham to be at its heart. This is their bid, and it is thanks to their support that we have made it this far."*

*"So, whether you are directly involved in the campaign, have submitted an idea or shared one of our social media posts, I would like to say a big thank you."*

*"The partnership is now focused on taking County Durham to the next stage of the competition and we will be working hard to prepare the bid. Please continue to support the campaign and help us to seize an opportunity that will benefit our communities for generations to come."*



## Congregate, illuminate and innovate

As a UK City of Culture 2025 finalist, County Durham now has until January next year to submit its final bid. This will be based around three key themes – innovation, illumination and congregation – as well as time and space, sustainability, international friendships, food and democracy. The 200th anniversary of the Stockton and Darlington Railway will also be key to the celebrations.

The people of County Durham will be at the heart of the programme and there will be opportunities for communities to work alongside artists, academics, economists and food activists to determine and realise their own ideas.

The overall winner is expected to be announced in May.

**“Our bid is on behalf of the whole of County Durham...”**

**D2025**  
UK City of Culture Bid  
Durham. No Ordinary County.

## How to support the Durham 2025 campaign

Pledge your support on the Durham 2025 website at: [www.durham2025.co.uk/get-involved/](http://www.durham2025.co.uk/get-involved/)

Follow our social media accounts [www.facebook.com/durham2025](http://www.facebook.com/durham2025), [www.twitter.com/durham\\_2025](http://www.twitter.com/durham_2025) and [www.instagram.com/durham2025](http://www.instagram.com/durham2025)

Share pictures of your favourite places in County Durham on social media using the hashtag **#Durham2025**. It could be one of our stunning heritage sites, your favourite live music venue or coffee shop, or the pitch where you play five-a-side football each week.

Submit your ideas for cultural projects that could be developed in 2025 at [www.durham2025.co.uk/get-involved/](http://www.durham2025.co.uk/get-involved/)  
All ideas are welcome.

**#Durham2025**



# Improving Horden Together

Tackling neighbourhood nuisances and improving quality of life in a County Durham village are at the heart of a new partnership.

Horden Together will see a range of organisations working closely with residents to address the issues and concerns that matter most to them.

Over the next three years, representatives from the county council, Durham Constabulary, County Durham and Darlington Fire and Rescue Service, Horden Parish Council and East Durham Trust, as well as Durham's Police and Crime Commissioner, will offer a range of support.

Based at a new neighbourhood hub within the Miners' Welfare Hall, they will combine their efforts to tackle issues such as crime and anti-social behaviour, environmental problems and empty properties.

The team will work with the local community to identify emerging issues and take action to solve the problems that people say most affect their daily lives.



Despite the pandemic, work has been taking place over the past 18 months to address issues of concern in Horden. In 2020, our **Community Action Team** took action to deal with flytipping and vacant properties that were being misused.

And, earlier in the year, dozens of empty properties were made secure as part of the **Safer Streets Initiative**, which aims to reduce incidents of burglary and vandalism.

## Horden Masterplan

The work of the partnership will complement ongoing regeneration in the area and support the long-term aspirations of the Horden Masterplan. The masterplan, which was created in 2019, looks to

address issues with poor housing, the environment and access to amenities in the village, with a particular focus on the area known locally as the 'numbered streets'.

The masterplan was informed by the views of residents, who made it clear that significant change is required in Horden.

The village has experienced substantial social and economic problems and is in the top three per cent of the most deprived areas in England and Wales. Our masterplan sets out our intention, subject to funding, to clear and rebuild houses and properties in the village, some of which are empty and no longer fit for purpose and which attract anti-social behaviour and crime.

## Get in touch

If you live in Horden and would like to find out more about the Horden Together project, email [horden.together@durham.gov.uk](mailto:horden.together@durham.gov.uk) or call 03000 263 387.





## New £50 million NETPark extension

The North East's premier science and technology park is set to expand following the approval of a £50 million scheme.

The investment will see the creation of a third phase at the North East Technology Park (NETPark) in Sedgefield, creating more than 1,200 new jobs and helping us deliver our ambition to create more and better jobs for residents.

Since opening in 2004, NETPark has become a collaborative community of growing science, engineering and technology businesses. It is now home to more than 40 companies, with 600 people employed on-site.

The new development will be overseen by Business Durham, our business support service, which manages NETPark.

Sarah Slaven, managing director of Business Durham, said: *"Phase Three of NETPark is a unique opportunity for high growth science, engineering and technology companies to design and build bespoke premises to grow, scale-up and commercialise their operations."*

*"We are seeing demand for specialist facilities on-site, and this exciting next phase in NETPark's expansion will open up possibilities for growing companies, be they existing businesses on the park or companies who want a presence here. NETPark is fast becoming one of the UK's leading science parks and we are looking forward to seeing current tenants grow and thrive, as well as welcoming new ones."*



Find out more [www.northeasttechnologypark.com](http://www.northeasttechnologypark.com)



“ NETPark is fast becoming one of the UK's leading science parks... ”

## Grant safeguards thousands of jobs

**More than 3,800 jobs in County Durham have been safeguarded during the pandemic thanks to help from our Durham Business Recovery Grant.**

The fund, launched in January, aimed to support businesses that were developing credible plans to meet the challenges caused by the pandemic – such as purchasing new equipment, developing new products, expanding into new markets, and adapting their operational models.

In total, 334 businesses benefitted from grants of between £1,000 and £40,000. Businesses could also claim up to 75 per cent of eligible costs of their recovery plans.

Due to high demand, an additional £1m was added to the fund, making it a £6m scheme.

Grants have been awarded to companies varying in size and from a wide range of sectors, including Flamingo Bar and Café in Seaham.



Owner, Hannah Jackson-Harrison, said: *"The council has been amazing throughout the whole of the pandemic. I just don't think we would have muddled through if we hadn't had the help in the form of business support grants from them. The grants came through very quickly and communication has been fantastic."*

## Improving our town centres

As part of our ambitious **Towns and Villages Investment Plan**, we are pressing ahead with work to enhance our communities and support their recovery from the impact of the coronavirus pandemic.



In Consett town centre, a multi-purpose event space and a solar powered bench where mobile phones can be charged are among improvements planned. A wider work programme aims to draw on Consett's distinct character to create a vibrant shopping destination with thriving independent retailers. The aim is also to create and safeguard jobs.



### **Town centre revamp**

Following successful projects in Victoria Road, Wesley Street and Front Street, we are now focusing on **Middle Street** where more than £1 million-worth of improvements are due to start early in the new year.

A new outdoor events space in Middle Street will allow the community to host festivals, street art performances and markets. Additional lighting is being installed to support any events taking place, allowing poppies to be projected onto the street to mark Remembrance Day and snowflakes for the Christmas light display.

As part of our commitment to tackling climate change, existing streetlamps will also be replaced with energy efficient LED lighting. We have also commissioned a solar bench, using recycled plastic, which will feature solar powered phone chargers.

And visitors will be able to access **free Wi-Fi** in the town from early next year. Users will be able to join the Connected Consett system, logging in via a simple form or through their social media.

It's hoped the offer will increase the time people spend in the town centre and encourage additional footfall, helping local businesses to grow.

**More parking** is also now available to visitors. The existing car park on John Street has been extended, with the removal of large planters to provide additional spaces, including accessible parking.







## 📍 Enhancing Consett's heritage

Consett's rich heritage has been used to help enhance Middle Street's current appearance. The owners of the Delta North Consett charity shop have used our funding to create a more attractive and interesting store front, which has proven to be a talking point for passers-by.

Decorating the shutters with old photographs of the town, including its steel making history, has helped to draw attention to the premises.



Paul Hillary, from Delta North, said: *"The images made a big difference in helping to generate interest in the shop and, as a result, we have been really busy. We were the first charity shop in the town to get back to doing collections and deliveries following lockdown."*

Paul also believes the changes made inspired other businesses, helping to transform the wider shopping street. *"Since our store front was decorated, I have noticed other shops being more creative and colourful with their fronts, attracting even more interest in Consett and creating more opportunities for us all to grow."*

## Providing a new lease of life

As part of our work to improve business premises, we are also supporting smaller ventures in towns and villages across the county. Targeted business improvement support is available to help new businesses move into new premises, bring derelict or underused space back into use and encourage businesses to grow.

## 📍 Helping businesses to thrive

Another business to benefit from targeted support is The Old Court House on Victoria Road. Funding has enabled the owners of the town's former courthouse to expand their business and transform the middle floor of the building into two escape rooms, both of which help to celebrate the history of the town.

Offering a wider variety of entertainment is key to helping towns survive and thrive, according to owner, David Parkinson. *"People are in need of more entertainment and escapism, particularly after the past 18 months,"* explains David. *"Offering unique experiences and giving visitors greater choice is so important. We want to ensure that Consett has as much to offer as nearby cities such as Durham."*

By diversifying the offer at The Old Court House, more job opportunities are also being created for residents. *"We already need more staff and are even looking to employ a full-time games master soon,"* said David. *"Hopefully, job opportunities are another way to encourage people to stay local – whether it is to live, visit or work. We are determined to make Consett a town that residents are proud of and look forward to offering people even more over the coming months."*



To find out more about the Towns and Villages strategy, visit [www.durham.gov.uk/townsandvillages](http://www.durham.gov.uk/townsandvillages)



# Be prepared for winter

With winter on the way, it's time to start preparing for the bad weather and considering how it may affect your travel.

## Stay in the know

The winter weather can be unpredictable, so follow our Facebook and Twitter accounts for regular updates on road conditions and gritting routes.

Find out about our work to keep the county moving during the winter at [www.durham.gov.uk/winterinfo](http://www.durham.gov.uk/winterinfo)

Remember to check the weather before setting off, particularly if you are heading on a long journey. Met Office weather warnings are available online at [www.durham.gov.uk/weatherwarnings](http://www.durham.gov.uk/weatherwarnings)

## Snow and ice

When snow falls, we work to clear main roads first to keep public transport up and running. This includes pre-salting about 1,060 miles of road. View our gritting routes at [www.durham.gov.uk/gritting](http://www.durham.gov.uk/gritting)

## Potholes

The winter weather is often the root cause of potholes on our roads. To report a pothole, visit [www.durham.gov.uk/potholes](http://www.durham.gov.uk/potholes) or call 03000 26 0000.

## Sandbags

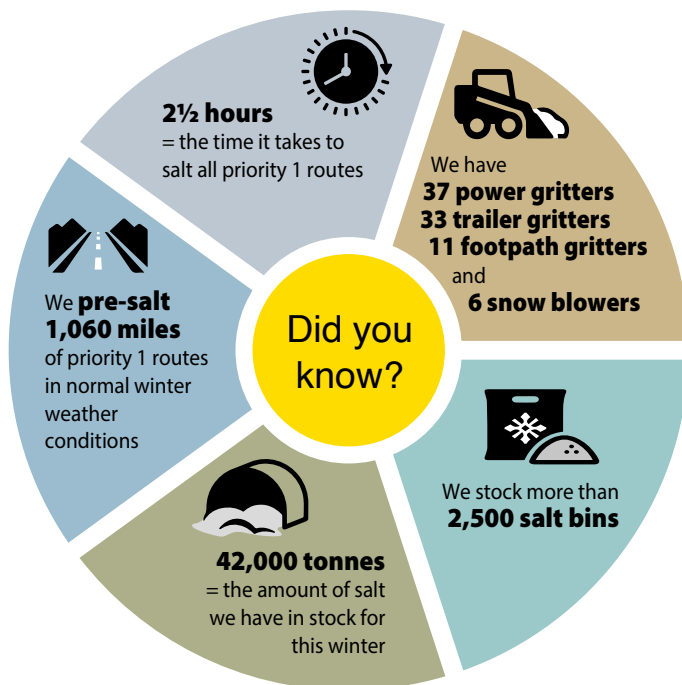
We can provide sandbags if your property is at immediate risk of flooding in the wet winter months. Visit [www.durham.gov.uk/sandbags](http://www.durham.gov.uk/sandbags) or call 03000 26 0000.

## Gritting

Keeping our roads and pavements clear is essential in order to keep the county moving during any spells of bad weather. That's why we start each winter with a stockpile of 42,000 tonnes of salt.

We also have a fleet of 37 power gritters and 33 trailer gritters for spreading salt on roads, along with 11 footpath gritters and six snow blowers.

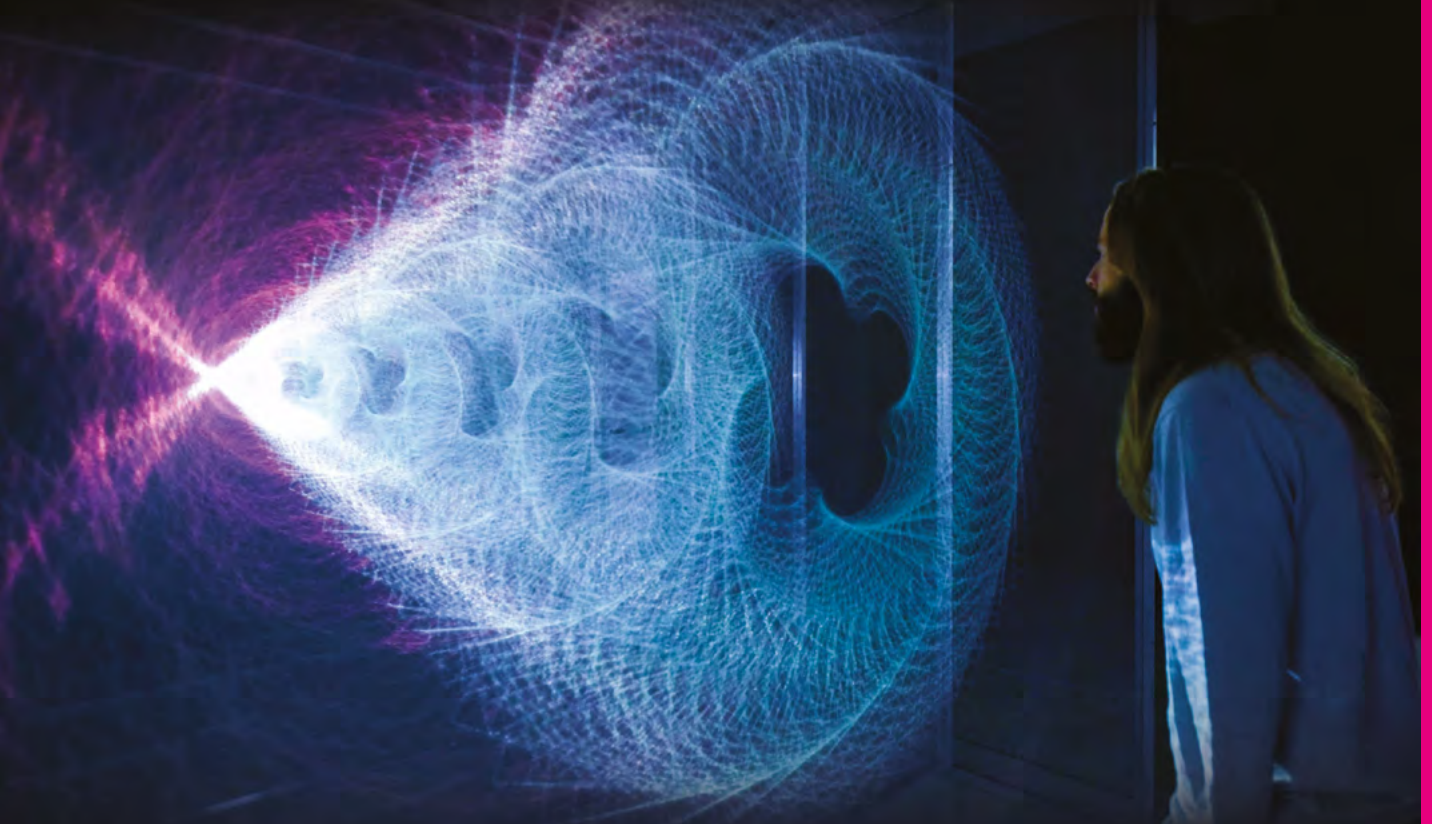
We keep more than 2,500 salt bins in communities across the county stocked up for residents to use on local roads. If a salt bin needs refilling, let us know by completing the online form, quoting the number on the top of the bin. [www.durham.gov.uk/saltbins](http://www.durham.gov.uk/saltbins)





# LUMIERE

**Thursday 18 to Sunday 21 November**



Lumiere the UK's leading light festival makes a spectacular return from Thursday 18 to Sunday 21 November.

This year, Lumiere producers, Artichoke, are set to present a thrilling line-up of artworks by internationally renowned artists alongside emerging and local talent. The festival will light up the city with brand new commissions created especially for Durham alongside some of the most striking and innovative light art in existence from across the globe.

In 2019, Lumiere celebrated its ten-year anniversary, welcoming its one millionth visitor and achieving an economic impact of £40 million over the combined ten years of the festival. The festival also celebrated the milestone of reaching more than 10,000 people through its Countywide Learning and Participation programme.

This year will see another action-packed programme that will bring together people from across County Durham to celebrate creativity. Through this, Artichoke is proud to be working with a diverse range of community groups as well as its first secondary school, The Durham Federation. These projects will see artworks produced by the groups presented as part of the main Lumiere programme.

By transforming Durham into a place of light, Lumiere has strengthened its reputation as a cultural destination where heritage and innovation are championed and art transforms lives.

[lumiere-festival.com](http://lumiere-festival.com) | [@artichoketrust](https://twitter.com/artichoketrust) | [#LumiereDurham](https://twitter.com/LumiereDurham)

AN  
**ARTICHOKE**  
PROJECT

Lumiere is made possible through the support of  
commissioning body Durham County Council, Arts Council  
England and a host of funders and supporters.

Commissioned by





## Let there be light

From a show-stopping tribute to Bauhaus, a neon stickman band and an interactive digital tree, to an artwork projected onto a 14th Century fortress, Lumiere 2021 will offer special moments to come together and celebrate.

The festival will transform familiar landmarks, far flung places and little-known corners of the city and, for the first time, the wider county, into large-scale artworks made of light that will move, thrill and delight.

And, after the difficult events of the past 18 months, festival producers Artichoke will present a Covid-secure event for the people of County Durham and beyond to enjoy.

Here are some of the festival's highlights.

### Lumiere: Marks in the Landscape

For its 2021 edition, Lumiere expands from Durham City centre into the wider county for the first time. Lumiere: Marks in the Landscape is a series of six commissions that see artists responding to the interventions made by humans in the natural world. They include:

#### Apollo 50

Mader Wiermann, Germany  
Apollo Pavilion, SR8 1LE

Victor Pasmore's Apollo Pavilion is one of Britain's most famous examples of Brutalist art.

When the work turned 50 in 2019, Artichoke produced Apollo 50, a mesmerising artwork by Berlin-based, Mader Wiermann. To the delight of local residents the work is now set to return to Peterlee.

The video-mapped light sequence, accompanied by a gentle, undulating soundscape, transforms Pasmore's iconic design into a moving, flowing sculpture.

#### A Telling of Light

Elaine Buckholtz & Ian Winters, US/UK  
Penshaw Monument, DH4 7NJ  
Viewing point: Herrington Country Park

A Telling of Light is a new commission memorialising and commemorating the tens of thousands of lives lost to Covid in the UK.

Visible from up to 20 miles away, it will incorporate multiple videos of a single illuminated breath rising up the pillars of Penshaw Monument and disappearing into the night.

The sequence will be accompanied by the music of Hildegard von Bingen, a 12th Century mystic and visionary and one of the earliest-known female composers. Available for audiences to download from [www.lumiere-festival.com](http://www.lumiere-festival.com), to listen to as they view the piece.

*Penshaw Monument is managed by National Trust.*

#### Castle of Light

Javier Riera, Spain  
Raby Castle, DL2 3AH

Medieval meets modern in this series of three-dimensional abstract projections that magically transform the lakeside façade of Durham's famous 14th Century fortress.

Asturian-born artist Javier Riera responds to Raby Castle's unique architecture with a mind-bending and meditative series of geometric shapes that play with and echo its fortress exterior.



## Lumiere City Programme

### BRILLIANT 2021 Invisible Hearts

Steph Whalen, UK

While volunteering at Lumiere 2019, Steph Whalen found that when she tried to hand out Sunflower Lanyards as a means of offering support, people had no idea what they stood for. But, over the past 18 months she has noticed a change, with people now more aware that they represent hidden disabilities. Steph has bipolar affective disorder and her artwork sheds light on the importance of recognition and understanding for those with hidden disabilities.

Steph is one of this year's BRILLIANT winners. BRILLIANT is Lumiere's artist development scheme, which offers the opportunity to anyone with a brilliant idea for a light artwork to be part of the Lumiere programme.

*BRILLIANT 2021 is supported by EMG Solicitors.*



### Article 12

Year 9 Students from The Durham Federation School  
Working with writer, Lucie Brownlee and Neon Workshops  
UK

Students from The Durham Federation took part in neon making and creative writing workshops to produce a series of artworks for this year's festival. The title, Article 12, refers to the UN Convention on the Rights of the Child, which establishes the right of every child to freely express their views.

*Article 12 is supported by Atom Bank, Ragdoll Foundation and County Durham Community Foundation.*



### Tree of Hope

TEKJA, UK

Tree of Hope is a real-time, digital visualisation of a tree, with branches that grow as hopes are made. Starting as a sapling, the tree has been collecting and analysing hopes in the run up to Lumiere. As more hopes are added, it will transform into a beautiful adult tree with two distinct branches: the hopes we have made for ourselves and for others.

Contribute your hope at [treeofhope.io/](http://treeofhope.io/)

*Tree of Hope is supported by Visit County Durham. The physical version of the artwork is supported by Prince Bishops Place.*

### Scattered Light

Jim Campbell, USA

This installation uses thousands of LED lightbulbs to transform the movements of people walking past into shadows captured within a glittering 3D galaxy of lights. Scattered Light plays with the contrast between the bustle of city life and the quiet darkness of winter nights.

*Scattered Light is supported by Durham University.*



# Top tips for Lumiere 2021

Measures will be in place to ensure this year's Lumiere is a Covid-secure event. Follow our top tips to help make the most of your Lumiere experience.

## Plan your visit

Download the free Lumiere app for details of all the installations and where to find them on the interactive maps. Printed festival programmes are also available for a suggested donation of £2.

Fancy staying a little longer? Find out what else there is to see and do in Durham at [www.thisisdurham.com/Lumiere](http://www.thisisdurham.com/Lumiere)

## Use park and ride or public transport

The best way to get to the festival is by using one of our park and ride facilities. Park and ride services will operate from Belmont, Sniperley, Howlands, New College and Meadowfield for £2 per person. Under-16s go free. There will be extra services during the festival, with the last bus leaving at 11.30pm.

Durham train station is also a short walk from the city centre.

## Timed ticket slots

In a change from previous years, you will need a free ticket with a specified arrival time in order to access the controlled city centre area.

Book at [www.lumiere-festival.com](http://www.lumiere-festival.com)

Don't panic if you don't have a ticket. Two thirds of artworks in the city are outside the ticketed zone so you don't need a ticket.

Visit [www.lumiere-festival.com](http://www.lumiere-festival.com) or download the free Lumiere app to find out more.

## Travel light

For your safety and security, bag checks and body searches will be in operation at entry points into the central peninsula. Please think carefully about what you bring with you and leave large bags and rucksacks (over A4 size) at home.

## Come prepared

It's November, it's outdoors and it's dark, so wrap up warm, wear comfortable, sturdy shoes and bring a waterproof. We also recommend a small torch – and don't forget to bring your camera.

## Get a taste of the festival

Durham has a great selection of cafés, restaurants and bars to choose from. Visit [www.thisisdurham.com/lumiere](http://www.thisisdurham.com/lumiere) to find out more.

## Follow Lumiere on social media

[@artichoketrust](https://www.facebook.com/artichoketrust) on Facebook, Twitter, TikTok and Instagram, [#LumiereDurham](https://www.instagram.com/LumiereDurham).

For the latest traffic and travel information follow [@DurhamCouncil](https://www.instagram.com/DurhamCouncil)

## Ask a festival maker

Our Lumiere volunteers are there to help you enjoy your visit. If you need help or have a question, you can identify them by their light blue tabards.

## Share your experience

Share your photos on social media with the hashtag [#LumiereDurham](https://www.instagram.com/LumiereDurham)

Visit [www.lumiere-festival.com](http://www.lumiere-festival.com) to find out more.



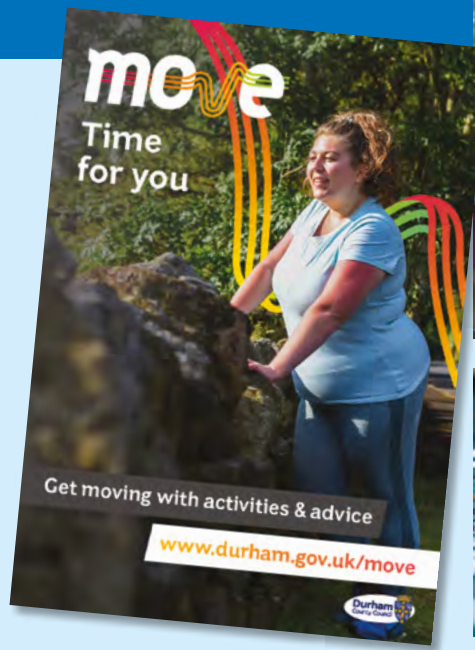
## Get moving and feel good

Research shows that the more you move the better you feel. Our *Move* campaign is helping people build activity into their lives by helping them do something they enjoy at their own pace.

Even a small amount of activity can benefit your health. It can reduce the risk of major illnesses such as coronary heart disease, stroke, type 2 diabetes and cancer and lower the risk of early death by up to 30 per cent, as well as boosting your mood and self-esteem.

Our Move advisors will match your individual needs with fun and accessible activities taking place in your community and, don't worry, there's something for all ages, abilities and preferences.

Find out more and get started at [www.durham.gov.uk/move](http://www.durham.gov.uk/move)



## Reduce your risk

Have you started drinking more alcohol since the start of the pandemic? If so, it might be time to start thinking about ways to cut down.

The facts about alcohol:

- **Cancer:** alcohol raises the risk of at least seven different cancers.
- **Heart disease:** too much alcohol can increase blood pressure and weight, increasing the risk of a heart attack, stroke and type 2 diabetes.
- **Mental health:** you might think drinking helps you cope with stress, but it is more likely to lead to hangovers, tiredness, arguments and low mood.
- **Weight:** the number of calories in alcohol can easily stack up.
- **Liver:** drinking a large amount of alcohol, even for just a few days, can lead to a build-up of fats in the liver. Drinking too much over many years can result in serious and permanent damage.
- **Immune system:** heavy drinking can weaken the immune system and leave us more vulnerable to diseases such as Covid.

To keep your risk low, men and women should not drink more than 14 units a week – that's around six pints of regular strength beer or lager, six standard glasses of wine or seven double measures of spirits.

For tips to help you cut your risk, visit [reducemyrisk.tv](http://reducemyrisk.tv)

### 14 UNITS EQUALS:



## Don't wait to quit

We all need to protect ourselves and our families – especially if we smoke.

Smoking damages the lungs and immune system, making it harder to fight off infections.

It increases your risk of heart attack, stroke, diabetes, COPD, and 16 types of cancer.

But your health will start to improve from the moment you stop – within weeks you'll see benefits and reduce your risks, as well as saving money.

Make 2022 the year you quit for good – for you, your family and your wallet.

Call **Smokefree County Durham** to get started on **0800 772 0565**.



# Stay well this winter

Cold weather can be seriously bad for your health. That's why it's especially important to look after yourself and others during the winter.

## Winter health tips

### Vaccinations

If you are eligible for the flu vaccine, you are also likely to benefit from the **pneumonia vaccine**. People with certain long-term health conditions and those aged 65 and over are generally eligible.

Although **shingles** is not seasonal, now is a good time to check if you need the shingles vaccine. It is usually offered to people aged between 70 and 79.

Find out more about vaccinations at [www.nhs.uk/conditions/vaccinations](http://www.nhs.uk/conditions/vaccinations)

### Prescriptions

Make sure you have a good supply of prescribed drugs or medicines in case of poor weather conditions – and don't forget to get them before your pharmacy or GP closes for Christmas.

You can order repeat prescriptions online. Ask your GP practice for more information or visit [www.nhs.uk/nhs-services/gps/using-online-services](http://www.nhs.uk/nhs-services/gps/using-online-services)

If you feel unwell, don't wait. Seek advice from your nearest pharmacist for minor health concerns or call 111 if you have a more urgent medical problem. In an emergency, call 999.



## Get your free flu vaccine

The last year has been a tough one and the last thing anyone needs, on top of everything else, is flu.

**Do Your Bit** to protect yourself and others by getting your free flu vaccine this winter.

Flu can be very serious and can even kill – it spreads easily so you could be putting others at risk as well as yourself. Not only that but, if you get flu and coronavirus at the same time, you're more likely to be more seriously ill. Those most at risk from flu are also more vulnerable to Covid.

The flu vaccine – one injection in the arm or a nasal spray if you are under 16 – is easy to get, safe and available for free to more people than ever before.

You can get a free vaccine if you:

- ✓ are 50 and over
- ✓ have certain health conditions
- ✓ are pregnant
- ✓ are in long-stay residential care
- ✓ receive a carer's allowance, or are the main carer for an older or disabled person who may be at risk if you get sick
- ✓ are a frontline health or social care worker or you provide health or social care through direct payments or personal health budgets

The flu vaccine is also available free to children and young people from the age of two to 15 and any child with a medical condition.

When you're invited for your flu vaccine – make sure you take up the offer.

To find out about arrangements in your area – visit your GP surgery's website, your local pharmacy or visit [www.nhs.uk/conditions/flu/](http://www.nhs.uk/conditions/flu/)







## Keep your home warm

Cold weather can aggravate existing health problems and make you more vulnerable to winter illness.

Breathing cold air can increase the risk of getting a chest infection so it's important to heat your home to at least 18°C (65°F) and keep bedroom windows closed.

During the day, you may prefer your living room to be slightly warmer than 18°C.

Keeping active while you are indoors will also help you stay well. Try not to sit still for more than an hour or so and make sure you have hot meals and drinks regularly throughout the day.

## Help with heating costs

Our **Warm and Healthy Homes** service provides grants to service and repair your existing wall mounted gas central heating boiler.

Grants are available to owner occupier households with health issues and those whose annual income is less than £36,000.

The service also offers impartial advice on switching your energy provider, as well as information on grants that may be available from your provider for replacing your gas boiler or home insulation.

For more information contact [warmhomes@durham.gov.uk](mailto:warmhomes@durham.gov.uk), phone 03000 268 000 or visit [www.durham.gov.uk/Saveonyourenergybills](http://www.durham.gov.uk/Saveonyourenergybills)



## Look in on vulnerable neighbours and relatives

It's important that we look out for each other, especially during the winter when some people can become more vulnerable.

Keep an eye on elderly and vulnerable friends, family and neighbours and, if you are concerned about them, call **Social Care Direct** on 03000 26 79 79.

Watch out for signs of hyperthermia, such as shivering, cold and pale skin, slurred speech, fast breathing, tiredness and confusion.

If you think someone is suffering from hypothermia, call 999 immediately.



For more information and advice on staying well over the coming months, visit the NHS: Stay Well This Winter website [www.nhs.uk/staywell](http://www.nhs.uk/staywell)



# Council services over the Christmas period



## Bin collections

Bins will be **emptied as normal up to and including on Christmas Eve. Collections resume on Tuesday 28 December**, with no changes to collection days over the New Year period.

You can check your collection days online by entering your house number and postcode into the 'My Durham' section at [www.durham.gov.uk](http://www.durham.gov.uk)

## Recycling centres

Our centres are open as normal over the holidays, **except for Christmas Day and New Year's Day.**

Frosterley Mobile Recycling Centre will not be in operation on Christmas Day.

Find locations and opening hours at [www.durham.gov.uk/hwrc](http://www.durham.gov.uk/hwrc)

## Bulky waste collections

There will be no large waste (bulky) collections between **Christmas Day and Monday 3 January.**

## Leisure centres

Will close early on Christmas Eve and New Year's Eve and will be closed on Christmas Day, Boxing Day and New Year's Day. Visit [www.durham.gov.uk/leisurecentres](http://www.durham.gov.uk/leisurecentres) for opening hours at your local centre.

## Libraries

Opening times may vary, call into your local library or check our website [www.durham.gov.uk/libraries](http://www.durham.gov.uk/libraries) for opening times.

## Register offices

Will be closed Christmas Day, Boxing Day, New Year's Day and the bank holidays on Monday 27 December, Tuesday 28 December and Monday 3 January.

**Bishop Auckland and Durham register offices will be open on Wednesday 29, Thursday 30 and Friday 31 December for appointments only.** Please telephone 03000 26 6000 to book an appointment. Normal opening hours will **resume on Tuesday 4 January.**

## Day centres for adults

Will be closed on **Christmas Day, Boxing Day and New Year's Day.**

## One Point family centres

Will close or have **restricted opening times** over the Christmas period. Call into your local centre before Christmas to see when it will be open or telephone **03000 216 111.**

## Customer access points

Will be **closed from 12.45pm on Friday 24 December** and will **reopen on Tuesday 4 January at 8.30am.**

## Payments line

Make a debit/credit card payment 24/7 on **0300 456 2771.**

## In an emergency

Call our out-of-hours number: **03000 26 0000.**



## Single Use Plastics Pledge

Have you signed our Single Use Plastics Pledge?

As we work towards reducing carbon emissions as a council and a county – we're also asking you to do your bit by pledging to help out.

Hundreds of schools, community groups and businesses across the county have already signed up and made their own pledge. These include banning plastic cutlery and replacing throw away cups at water coolers.



You can sign up here

[www.durham.gov.uk/singleuseplastics](http://www.durham.gov.uk/singleuseplastics)



Victoria Burrell, waste strategy team manager.



Claire Storey and Janet Kelly from our Community Action Team.

## Action to spruce up Ferryhill

Our Community Action Team is currently in Dean Bank in Ferryhill.

The team, who will be in the area until 24 December, are working to tackle concerns raised by residents, including housing and environmental issues.

The 11-week project will see officers from a range of council teams working with partner organisations including the police, town council and housing associations.

The team recently visited South Moor, where they worked on 265 issues identified through resident reports and walkabouts. By the end of the project they had issued 91 legal notices requiring action to be taken to improve 39 issues at 32 properties.

Find out more at [www.durham.gov.uk/CAT](http://www.durham.gov.uk/CAT)

## Your waste, your responsibility

If you ask someone to take your waste away it's upto you to ensure they have a license and get rid of it properly.

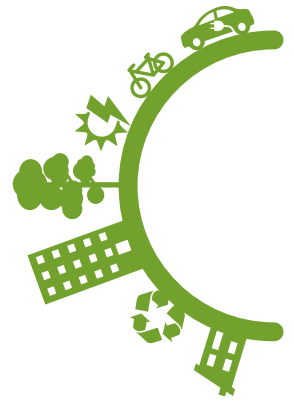
**Don't risk a fine!**

[www.durham.gov.uk/flytipping](http://www.durham.gov.uk/flytipping)



# Christmas shouldn't cost the earth...

## remember to reduce, reuse, recycle



Did you know that in UK households we waste 6.5 million tonnes of food every year, 4.5 million of which is edible? Those 4.5 million tonnes are enough to fill 38 million wheelie bins.

There are lots of ways of cutting down the amount of food you throw away, from sticking to a shopping list and storing food in airtight containers to freezing leftovers or using them for compost.



It's important that we think about food waste as it is a significant contributing factor to climate change, which has the potential to cause catastrophic problems for generations to come.

In County Durham, we declared a climate emergency. We're working to reduce our carbon emissions as much as we can and also encouraging you to do your bit as well.

And there are lots of ways in which you can help this Christmas in addition to reducing your food waste.

**Used batteries** can be taken to most supermarkets

or one of our recycling centres. Please don't put them in your rubbish bin as they can cause fires in our lorries.

Remember to put all your **glass bottles** in your green recycling box. If your glass recycling box often gets full, why not request an extra one

free of charge? Order online at [www.durham.gov.uk/newbin](http://www.durham.gov.uk/newbin) or call 03000 26 0000.

If you're thinking of having a clear out to make way for new **toys**, don't forget unwanted items can be donated to our shop at Stainton Grove household waste recycling centre, near Barnard Castle.

[www.durham.gov.uk/hwrc](http://www.durham.gov.uk/hwrc)



For more handy tips on how to have a greener Christmas, like our **Recycle for County Durham** Facebook page, where you'll find information on reducing waste,

reusing, recycling and composting for the festive season and throughout the year.

## Recycle your small electricals this Christmas

New Christmas lights? Recycle your old ones and any other old, broken or unused small electrical items at one of our collection points this Christmas. Collection points are located across the county. A full list is available at [www.durham.gov.uk/weee](http://www.durham.gov.uk/weee)

Don't forget to enter our free monthly competition available to anyone who recycles a small electrical item at a collection point. Each month one lucky winner, chosen at random, receives a specially chosen gift from our partners at AO.com. Details on how to enter are also available at [www.durham.gov.uk/weee](http://www.durham.gov.uk/weee)



## Real Christmas tree recycling

For information about how to recycle your real Christmas tree, visit [www.durham.gov.uk/christmastreecollections](http://www.durham.gov.uk/christmastreecollections) or call 03000 26 0000.



**cl!mate**  
County Durham



# What's on

## Empire Consett

Saturday 27 November to Friday 31 December

### Treasure Island

The swashbuckling 'Yo-Ho-Ho' panto Treasure Island is packed full of adventure, magic, dazzling costumes, hilarious characters and a modern twist on the traditional story. BSL and relaxed performances available. £9-£17, family ticket £56



Friday 11 February, 7.30pm

### A Country Night in Nashville

A musical journey through the history of country, featuring songs from its biggest stars both past and present, from Johnny Cash to Alan Jackson, Dolly to the Dixie Chicks, Willie Nelson to Little Big Town, all showcased by Dominic Halpin and the Hurricanes. £23.50, £22 concessions



Thursday 17 February, 7.30pm

### The Cinder Path

A sizzling and fast-moving drama set against the backdrop of the First World War. The story begins in the rolling hills of Northumberland, where Charlie Macfell, becomes an innocent witness to the murder of his cruel and sadistic landowner father. £22, £20 concessions



## Gala Durham

Wednesday 24 November 2021 to Sunday 9 January 2022

### The Adventures of Robin Hood

Expect a magical mix of live music, fun and mayhem from your favourite panto family, as they head for Sherburn Forest to tell the tale of heroic outlaw Robin Hood, his merry men (and women), and his battles with the evil Sheriff of Nottingham. £7-£16, family ticket £54-£62

Friday 28 January, 8pm

### Ed Byrne If I'm Honest

Ed considers whether he has any traits that are worth passing on to his children. Recommended age 16+. £25



Friday 11 February, 7.30pm

### Friends: The Musical Parody

An hilarious and good-hearted romp through your favourite moments from the hit TV show in an uncensored, fast-paced, music-filled production. Recommended age 16+. £28

[www.galadurham.co.uk](http://www.galadurham.co.uk) 03000 266 600

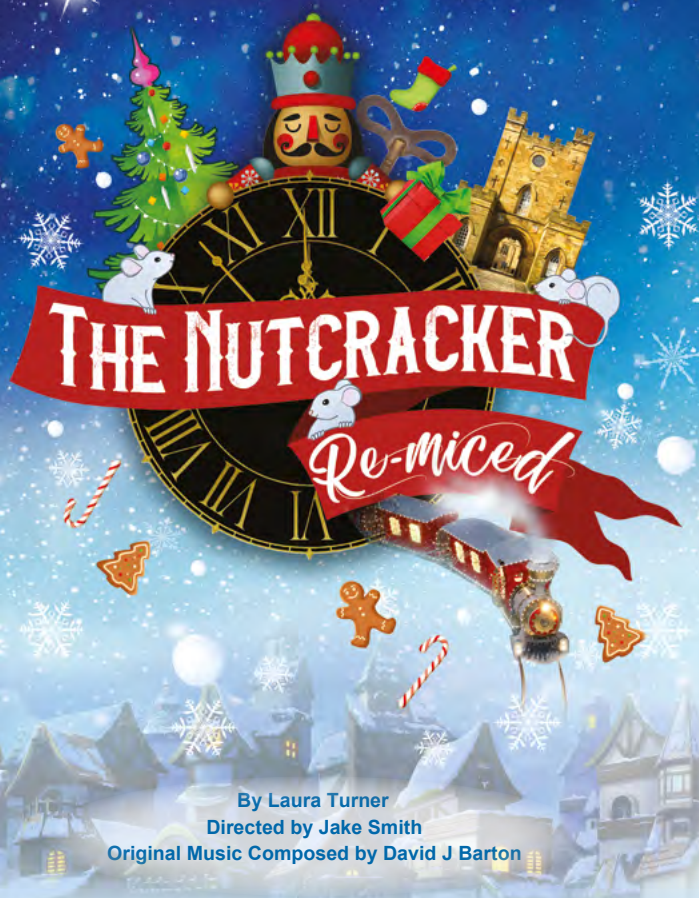


[www.empireconsett.co.uk](http://www.empireconsett.co.uk) 03000 262 400

Please note: venue opening is subject to change, please check before you visit. » **KNOW BEFORE YOU GO** »



A Gala Durham production



By Laura Turner  
 Directed by Jake Smith  
 Original Music Composed by David J Barton

## Bishop Auckland Town Hall and Gala Durham

Tuesday 30 November to Sunday 5 December at Bishop Auckland Town Hall

Tuesday 7 to Friday 24 December at Gala Durham

### The Nutcracker Re-Miced

Join the Rat Pack of three mice set to take on a huge adventure this Christmas – but hickory, dickory dock, don't be late! There's a party in the city clock!

In the Durham Castle Clock Tower, Spike, Cookie and their mum Molly are preparing for Christmas. But when a little girl needs their help, so begins their quest – with the help of an intriguing toy that's been left at the railway station...

This sparkling new, music-filled adaptation for ages three and over and their grown-ups brings the classic Nutcracker tale to life in a magical new story.

£8, family ticket £30

[www.galadurham.co.uk](http://www.galadurham.co.uk) 03000 266 600

[www.bishopaucklandtownhall.org.uk](http://www.bishopaucklandtownhall.org.uk) 03000 269 524

## Bishop Auckland Town Hall

Friday 17 December 6pm, Saturday 18 December 2pm and 6pm, Sunday 19 December 2pm and 6pm

### Jack and the Beanstalk

Follow hero Jack and his daft mum, Dame Trott, as they climb the beanstalk, defeat the giant and save their best friend, Daisy the Cow. This giant panto is packed with songs, slapstick, silliness, audience participation and fairy tale magic – join the Fe-Fi-Fo-fun! £10, £8 concession, £32 family ticket (two adults + two children)



Friday 10 December, 1pm

### Friday Lunchtime Jazz Series – Zoe Gilby Trio

Named Jazz Vocalist of the Year at the Parliamentary Awards 2019, Zoe promises a selection of standards and originals that will get your foot tapping. £5



24 February to 23 April 2022

### First Women UK

This exhibition showcases a selection of the unique collection of 100 portraits capturing women in the UK who were first in their field of

achievement. The portraits by photographer Anita Corbin provide inspiration and insight for a new generation of women seeking an understanding of their own roles in a rapidly changing world in which equality is still an issue. Free

[www.bishopaucklandtownhall.org.uk](http://www.bishopaucklandtownhall.org.uk) 03000 269 524



# Durham County Record Office

Online talks

## Third Thursday Talk: 'Mary Farrow, 1893-1918 – teacher, survivor of war, victim of Spanish flu'

by Gillian Hunt, local historian



Thursday  
18 November  
2021, from  
10.30am to  
11.30am

Mary's story is one of local and social history, courage, romance and,

finally, tragedy in the 1918 Spanish influenza epidemic.

We'll go from Hartlepool to Gainford via Durham University, trainee teachers in First World War Oxford, an eye-witness account of the Hartlepool bombardment and an emotional conclusion to the research project on Remembrance Sunday 2018.

The free talk will be held online via Zoom.



©DCRO Ref: D/Ph 333/2/17

## Branching Out: Divorce

Thursday 25 November at 10am and again at 6pm

Laws around marriage and divorce were very different in the past. Understanding how can help to explain anomalies you may find when researching your family tree, as well as throw light on how your ancestors lived.

This talk will also look at the surviving records and where to find them, including what is available online.

Aimed at family historians who are already familiar with the basics, the talk will be held online via Zoom. £5

Places for both talks must be booked in advance.

<https://recordofficeshop.durham.gov.uk/pgEventResult>  
03000 267 619



## Durham Vocal Festival

Returning in February 2022

With a full week of fantastic vocal music-making from Saturday 5 to Saturday 12 February, this year's vocal festival promises to be bigger and better than ever.

Highlights include concerts from international artists including Paul McCreech and the Garielle's and Ex Audi conducted by Durham University's very own James Weeks.

The festival is organised by Durham Music Service in partnership with Durham County Council, Arts Council England, Durham University and Durham Cathedral.

As well as hosting popular, well-known artists, the festival also showcases some amazing local talent. And, as always, education will be at the heart of the festival with thousands of pupils from across County Durham and Darlington taking part in events such as the North East Festival of Youth Choirs and the Primary and Secondary School choir of the year competition.

Visit [www.durhamvocalfestival.co.uk](http://www.durhamvocalfestival.co.uk) for more details



## Get winter inspiration from The Blog Squad

Visit County Durham has enlisted the support of bloggers and Instagrammers from across the region to showcase our county.

The Blog Squad will be visiting attractions and taking part in activities before sharing their experiences on the This is Durham website.

Check out the blog squad's posts for ideas of things you can see and do this winter, at:

[www.thisisdurham.com/blogsqad](http://www.thisisdurham.com/blogsqad)

Please note: venue opening is subject to change, please check before you visit. » **KNOW BEFORE YOU GO** »

## COMMUNITY EVENTS

Until 29 December

### An Introduction to Astronomy: Grassholme Observatory

Grassholme Observatory, Barnard Castle, DL12 0PW

From £16. 0345 155 0236

[www.grassholmeobservatory.com/whats-on/an-introduction-to-astronomy](http://www.grassholmeobservatory.com/whats-on/an-introduction-to-astronomy)

Until 31 December, Wednesdays

9.30am-10.30am and 10.45am-11.45am

### Little Dragons

Oriental Museum, Durham, DH1 3TH

A group for children under 5 and their families. Free. 0191 334 5691

[www.dur.ac.uk/oriental.museum](http://www.dur.ac.uk/oriental.museum)



Until 31 December

### Gruffalo Spotters Trail

Hamsterley Forest, DL13 3NL

Using the Gruffalo Spotter 2 app, fun activity pack and trail, interact with all your favourite characters as you go in search of the Gruffalo in the deep dark wood. £3.50 per pack. 01388 488 312

[www.forestryengland.uk/hamsterley-forest/gruffalo-spotters-trail](http://www.forestryengland.uk/hamsterley-forest/gruffalo-spotters-trail)

Until 28 February, Mon to Sun, 9am-4pm

### Autumn Exhibition by Chris & Steve Rocks

The Bob Abley Art Gallery, Spennymoor, DL16 6DG

Free. 01388 815 276

[www.spennymoor-tc.gov.uk](http://www.spennymoor-tc.gov.uk)

Until 31 May, Mon to Sun 10am-4pm

### Museum of Archaeology Gallery

Palace Green Library, Durham, DH1 3RN

Exhibition exploring the rich prehistoric and Roman archaeology of Durham.

0191 334 2932

[www.dur.ac.uk/archaeology.museum](http://www.dur.ac.uk/archaeology.museum)

## NOVEMBER



From Friday 12 November to Sunday 16 January

### Forest of Light at Beamish Hall Country House Hotel

Beamish Hall Country House Hotel, Stanley, DH9 0YB

At night, when the moon takes its place in the sky the Forest of Light comes to life. A captivating, illuminated experience set within an enchanted ancient woodland, with music, interactive props and projections. From free to £8. 01207 233 733 [www.beamish-hall.co.uk](http://www.beamish-hall.co.uk)

Tuesday 16 November, 7.30pm

### Christmas Flower Demonstration by Jan Faulkner

Sedgefield Parish Hall, Sedgefield, TS21 3AT  
£8.



Thursday 18 November, 8pm-10pm

### Mark Thomas: 50 Things About Us (16+)

The Witham, Barnard Castle, DL12 8LY

The political godfather of comedy is back on the road. £17.50, £12.50 concession. 01833 631 107 [www.thewitham.org.uk](http://www.thewitham.org.uk)

Friday 19 to Sunday 21 November, 10am-4pm

### Christmas Fair at Beamish Hall

Beamish Hall Country House Hotel, Stanley, DH9 0YB

See the hall at its fabulous, festive best and enjoy stalls offering everything from ornaments and gifts to treats and drinks. £4.

01207 233 733

[www.beamish-hall.co.uk](http://www.beamish-hall.co.uk)

Saturday 20 November, 6.30pm-9.15pm

### Janice Burns and Jon Doran, plus Heather Ferrier

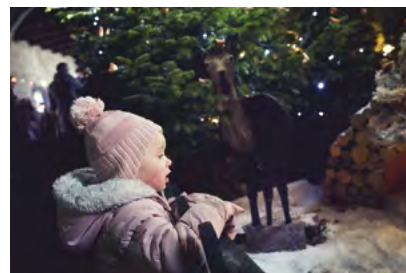
Claypath Delicatessen, Durham City, DH1 1QS

Janice Burns and Jon Doran are an Anglo-Scottish duo with a shared love of traditional music.

£10, £8 concession.

0191 340 7209

[downbytheriver9@outlook.com](mailto:downbytheriver9@outlook.com)



Saturday 27 November to Friday 24 December

### Enchanted Festive Forest at Raby Castle

Raby Castle, Staindrop, DL2 3AH

Follow the trail through the Enchanted Festive Forest in the Walled Gardens to discover magical Christmas scenes in a winter wonderland. Find all the hidden clues to collect a small prize. £5 children, £2 adults. 01833 660 207

[www.raby.co.uk](http://www.raby.co.uk)



### Sunday 28 November, 4pm Crook Winter Light Parade

Parade starts from Glenholme Drive, Crook, DL15 8QE

An enchanting procession that will light up the streets of Crook with live music, dancers and illuminated puppets. Free outdoor event.

01388 765 002

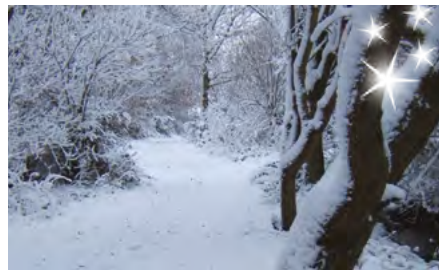


Sunday 28 November, 2.30pm, then  
Monday 29 November to Saturday 4  
December, 7.30pm

### **Blithe Spirit by Noel Coward**

City Theatre, Durham City, DH1 4RA

In this comedy, meet fussy, cantankerous novelist Charles Condomine, remarried but haunted (literally) by the ghost of his first wife, Elvira, who is called up by visiting a "happy medium" Madame Arcati. £8.50, concessions Sun and Mon £7.50. 03000 266 600  
[www.durhamdramatic.co.uk](http://www.durhamdramatic.co.uk)



Tuesday 30 November to Friday 24  
December, Mon to Sun, 11am-3pm

### **Art Block Christmas Sale**

74 Church Street, Seaham, SR7 7HF

A chance to purchase Christmas gifts  
from local traders at affordable prices.  
Free entry. 0191 649 9431  
[edanart@live.com](mailto:edanart@live.com)



Tuesday 30 November, 7, 14 and 21  
December, 10am-2pm and 6pm-9pm

### **South Causey Inn Christmas Markets**

Beamish Burn Road, Stanley, DH9 0LS

Browse a fantastic selection of festive  
treats and treasures from local traders.  
Free entry. 01207 235 555  
[www.southcausey.co.uk/christmas-markets](http://www.southcausey.co.uk/christmas-markets)

## DECEMBER



Thursday 2 and Friday 3 December 7pm,  
and Saturday 4 December 10am and  
1pm

### **Beauty and The Beast**

Spennymoor Settlement's Everyman  
Theatre, Spennymoor, DL16 6RY

Family pantomime for all, with fun, music  
and special effects. £8 each, family of  
four £28. 07813 189774  
[admin@spennymoorsettlement.co.uk](mailto:admin@spennymoorsettlement.co.uk)



### **Friday 3 to Sunday 5 December Durham Christmas Festival** Durham City

Four markets and around 400  
independent traders. Visit the craft and  
gift marquee on Palace Green, the  
regional producers' market in the  
Cloisters of Durham Cathedral, Durham  
Market Hall – home to 40 local  
independent businesses, and the festive  
outdoor market in Durham Market Place.  
Plus the Children's Lantern Parade on the  
afternoon of Saturday 4 December.  
[www.durhamchristmasfestival.com](http://www.durhamchristmasfestival.com)

Friday 3 December, 7.30pm

### **A Tribute to The Stars of the Stage and Screen at Ushaw**

Ushaw: Historic House, Chapels and  
Gardens, DH7 9RH

Enjoy some of the greatest songs from  
the past decades. £10. 0191 373 8500  
[www.ushaw.org](http://www.ushaw.org)



Saturday 4 December, various times

### **Christmas Elf Craft Workshop**

The Bowes Museum, Barnard Castle,  
DL12 8NP

A sparkly team of elves will show you  
how to make a magical Elf house and a  
family of elves or fairies. £5 per family.  
01833 690 606  
[www.thebowesmuseum.org.uk](http://www.thebowesmuseum.org.uk)

Saturday 4 December, 6pm

### **3 Steps 2 Venga**

The Big Club, Newton Aycliffe, DL5 6XN

A well-known, lively tribute act, covering  
the best from Steps and the Venga Boys.  
£5. 0793 170 1444



Saturday 4 and Sunday 5 December

### **Christmas Market at Raby Castle**

Raby Castle, Staindrop, DL2 3AH

Browse the stalls in the Coach Yard and  
discover lots of delicious treats, seasonal  
produce and beautiful homemade  
products from local suppliers. Free entry.  
01833 660 207 [www.raby.co.uk](http://www.raby.co.uk)

Tuesday 7 to Saturday 11 December,  
7.15pm

### **Chester-le-Street Theatre Group proudly presents Calendar Girls the Musical**

Chester-le-Street Community Centre,  
Newcastle Road, DH3 3TS

£10. 0191 388 3778



Wednesday 8 to Sunday 12 December,  
Wed to Fri 4pm-6pm. Sat 11am-5pm,  
Sun 2pm-6pm

### Christmas Tree Festival

St. Mary's Parish Church, Newgate,  
Barnard Castle, DL12 8NQ

A stunning display of 50 Christmas trees  
decorated by community groups,  
schools and businesses.

Free admission: donations welcome.  
01833 637018



Saturday 11 December, 7.30pm

### Christmas with Durham Cathedral Choir

Durham Cathedral, Durham City, DH1 3EH

A spectacular live concert of festive  
choral classics. £9-£29. 0191 338 7178  
[www.durhamcathedral.co.uk](http://www.durhamcathedral.co.uk)



Sunday 12 December at 12.30pm and  
4.30pm

### Cinderella

Durham Cricket, Emirates Riverside,  
Chester-le-Street, DH3 3QR

Get swept away by one of the most  
enchanting fairy tales of all time. £TBC.  
0191 387 2815

Tuesday 14 to Friday 24 December,  
various times

### Aladdin at Ushaw Historic House, Chapels and Gardens

Ushaw: Historic House, Chapels and  
Gardens, DH7 9RH

A fun-filled family pantomime will lots of  
laughter, singing and dancing.

From £13. 0191 373 8500

[https://www.ticketsource.co.uk/  
ushawpanto](https://www.ticketsource.co.uk/ushawpanto)



Friday 17 to Sunday 19 December,  
various times

### Christmas Market at The Bowes Museum

The Bowes Museum, Newgate,  
Barnard Castle, DL12 8NP

The galleries and grounds of The Bowes  
Museum are once again set to come  
alive with the aromas, sights and  
sounds of the Christmas Market.

Hosting dozens of stalls selling produce  
from around the region.

Adults £5, children £2.50.

01833 690 606

[www.thebowesmuseum.org.uk](http://www.thebowesmuseum.org.uk)



Friday 17 to Friday 24 December

### Sleeping Beauty

The Witham, 3 Horse Market,  
Barnard Castle, DL12 8LY

A spellbinding pantomime with  
beautiful costumes, stunning scenery  
and dazzling special effects.

From £10. 01833 631 107

[www.thewitham.org.uk](http://www.thewitham.org.uk)



Monday 20 December,  
various times

### The Snowman

Durham Cathedral, Durham, DH1 3EH

A special screening of family favourite  
The Snowman accompanied by a live  
orchestra. From £14.30.

0191 338 7178

[www.durhamcathedral.co.uk](http://www.durhamcathedral.co.uk)

## JANUARY 2022



Thursday 13 to Sunday 16 January,  
various times

### Pinocchio

Park View Theatre, Chester-le-Street,  
DH3 3QA

A pantomime with no strings attached.  
Geppetto, an old toymaker, always  
longed for a son of his own. One starry  
night, with a little help from the Blue  
Fairy and a cheeky little cricket, his wish  
came true and his latest puppet,  
Pinocchio, came to life. From £9.

0191 388 3362

[www.ticketsource.co.uk/whats-on/  
chester-le-street/park-view-theatre](http://www.ticketsource.co.uk/whats-on/chester-le-street/park-view-theatre)

*This is* **durham**

Find more events and  
activities at

[www.thisisdurham.com/  
whats-on](http://www.thisisdurham.com/whats-on)



## Think Careers in Care

**We're looking for people who want to make a difference to others, working in a job to be proud of which is full of variety.**

Just like Nicola who found her perfect job in adult social care through the Care Academy.

It's not always easy, but it's always worth it and we're recruiting now.

We offer free online training and we'll work with you to match your skills to current job opportunities.

Find out how the Care Academy can help you

 [www.durham.gov.uk/careacademyrecruitment](http://www.durham.gov.uk/careacademyrecruitment)

 [facebook.com/CareAcademyDurham](https://facebook.com/CareAcademyDurham)

County Durham  
**Care Partnership** 



**“**  
I found applying through the Care Academy really easy and my experience from my previous job works really well for my new role  
**”**



# #DOYOURBIT

## COUNTY DURHAM

It's been a tough year  
You don't need flu on top of everything else

**#getthefluvaccine**  
[www.nhs.uk/flu vaccine](http://www.nhs.uk/flu vaccine)



UK CITY OF CULTURE  
BIDDING CITY



# Durham. No ordinary county.

County Durham is one of eight areas through to the next stage of the competition.

Celebrate our culture at [Durham2025.co.uk](https://Durham2025.co.uk)

   #Durham2025

# D<sup>20</sup><sub>25</sub>

UK City of Culture Bid