

Peterlee Leisure Centre



Proposed Ground Floor Plan

As part of Durham County Council's Leisure Transformation programme, we are seeking your views on planned improvements for your Leisure Centre.

The programme plans have been put together following extensive research and consultation. They are aimed at providing all Centre users with access to an updated range of activities or facilities which will help everyone keep active, promote a healthy lifestyle and help us to sustain our leisure services now and into the future. Whether you are just starting out, or are already well into your activity journey, we want to help by providing spaces and places which are modern, well equipped, and meet the needs of our community.

The plan for your Leisure Centre is illustrated above. We have included an at a glance reference of what the proposed activities and facilities will be. Further information can also be found at: www.durham.gov.uk/leisuretransformation

If you would like to give us your view on the proposals being put forward, please complete the online survey at www.durham.gov.uk/leisuretransformation. Alternatively, please contact our Customer Services Team **03000 260 000** who will be pleased to help complete the survey if you cannot access online services.

The closing date for comments is **12 November 2021**.

We look forward to hearing from you.



Proposed Changes



**Adventure Play
Food and Drink
Ten Pin Bowling
Soft Play**

NEW Activity



**Fitness
Group Exercise Studio**

IMPROVED Activity or Upgraded Space



Squash Courts

Activity Removed or Repurposed Space



**Swimming
Sports Hall*
(half will be repurposed)
Sauna and Steam
Changing Room**

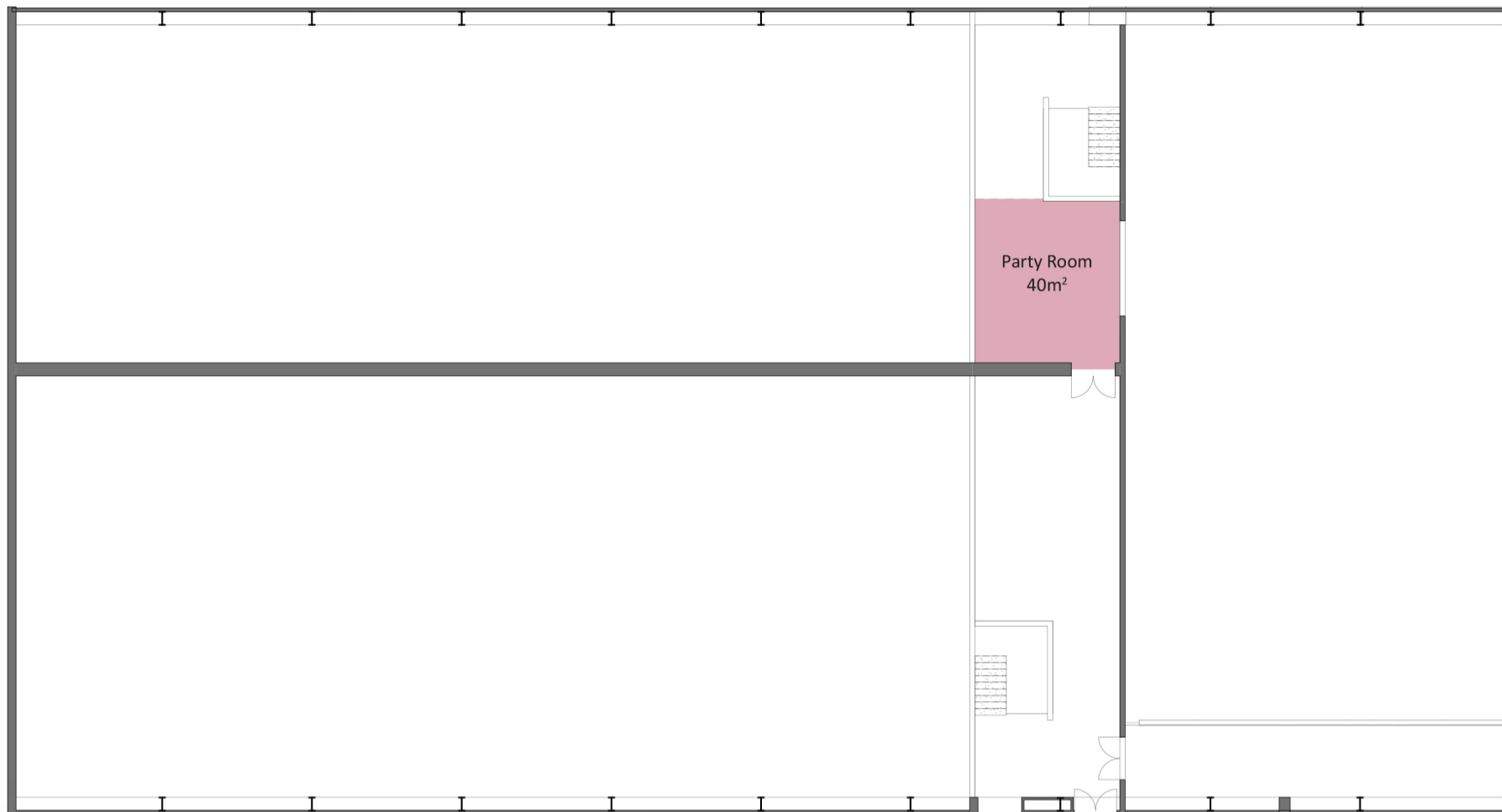
NO Change

Existing Ground Floor Plan

- Cafe
- Circulation
- Kitchen
- Store / Plant
- Studios
- Party Room
- Soft Play
- Staff
- Fitness
- WC / Changing



Peterlee Leisure Centre



As part of Durham County Council's Leisure Transformation programme, we are seeking your views on planned improvements for your Leisure Centre.

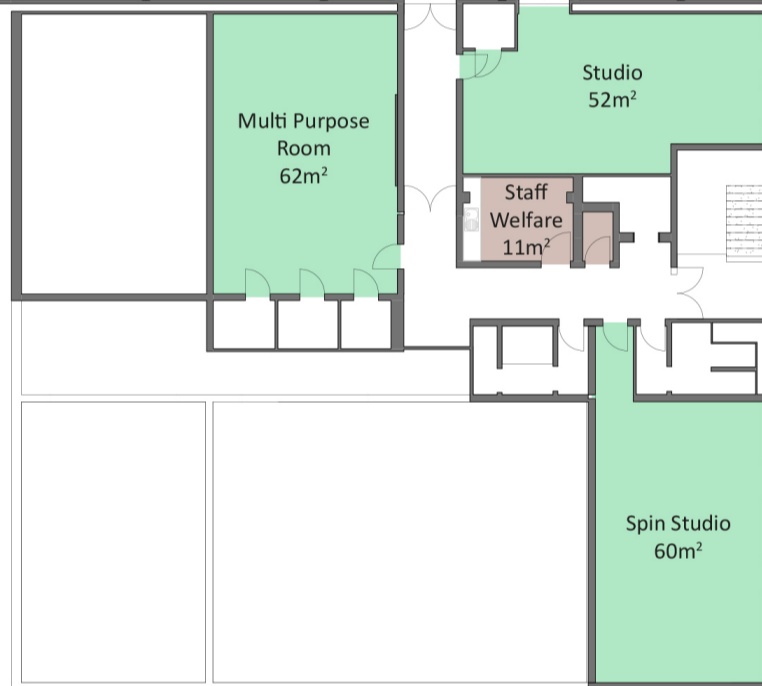
The programme plans have been put together following extensive research and consultation. They are aimed at providing all Centre users with access to an updated range of activities or facilities which will help everyone keep active, promote a healthy lifestyle and help us to sustain our leisure services now and into the future. Whether you are just starting out, or are already well into your activity journey, we want to help by providing spaces and places which are modern, well equipped, and meet the needs of our community.

The plan for your Leisure Centre is illustrated above. We have included an at a glance reference of what the proposed activities and facilities will be. Further information can also be found at: www.durham.gov.uk/leisuretransformation

If you would like to give us your view on the proposals being put forward, please complete the online survey at www.durham.gov.uk/leisuretransformation. Alternatively, please contact our Customer Services Team **03000 260 000** who will be pleased to help complete the survey if you cannot access online services.

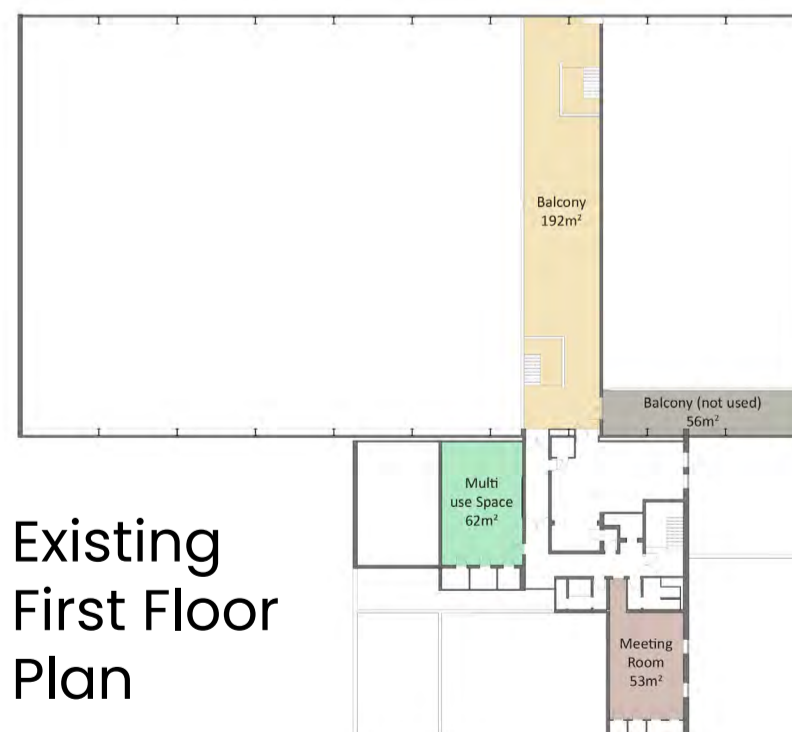
The closing date for comments is **12 November 2021**.

We look forward to hearing from you.



Proposed First Floor Plan

- Circulation
- Studios
- Staff
- Party Room
- Balcony
- Meeting Room



Existing First Floor Plan

Proposed Changes



Adventure Play
Food and Drink
Ten Pin Bowling
Soft Play

NEW Activity



Fitness
Group Exercise Studio

IMPROVED Activity or Upgraded Space



Squash Courts

Activity Removed or Repurposed Space



Swimming Sports Hall*
***(half will be repurposed)**
Sauna and Steam
Changing Room

NO Change