

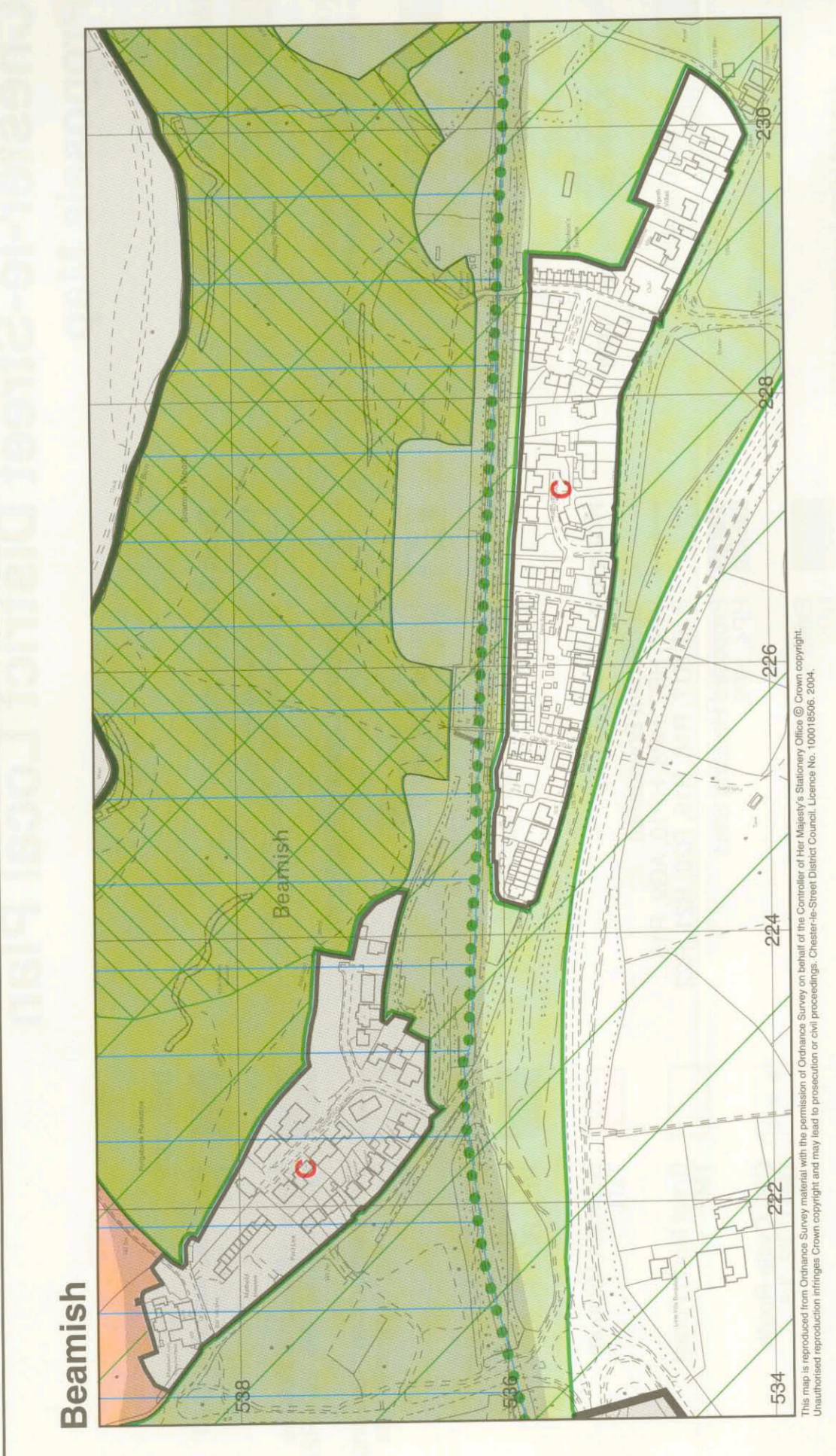
Chester-le-Street District Local Plan

Inset Maps

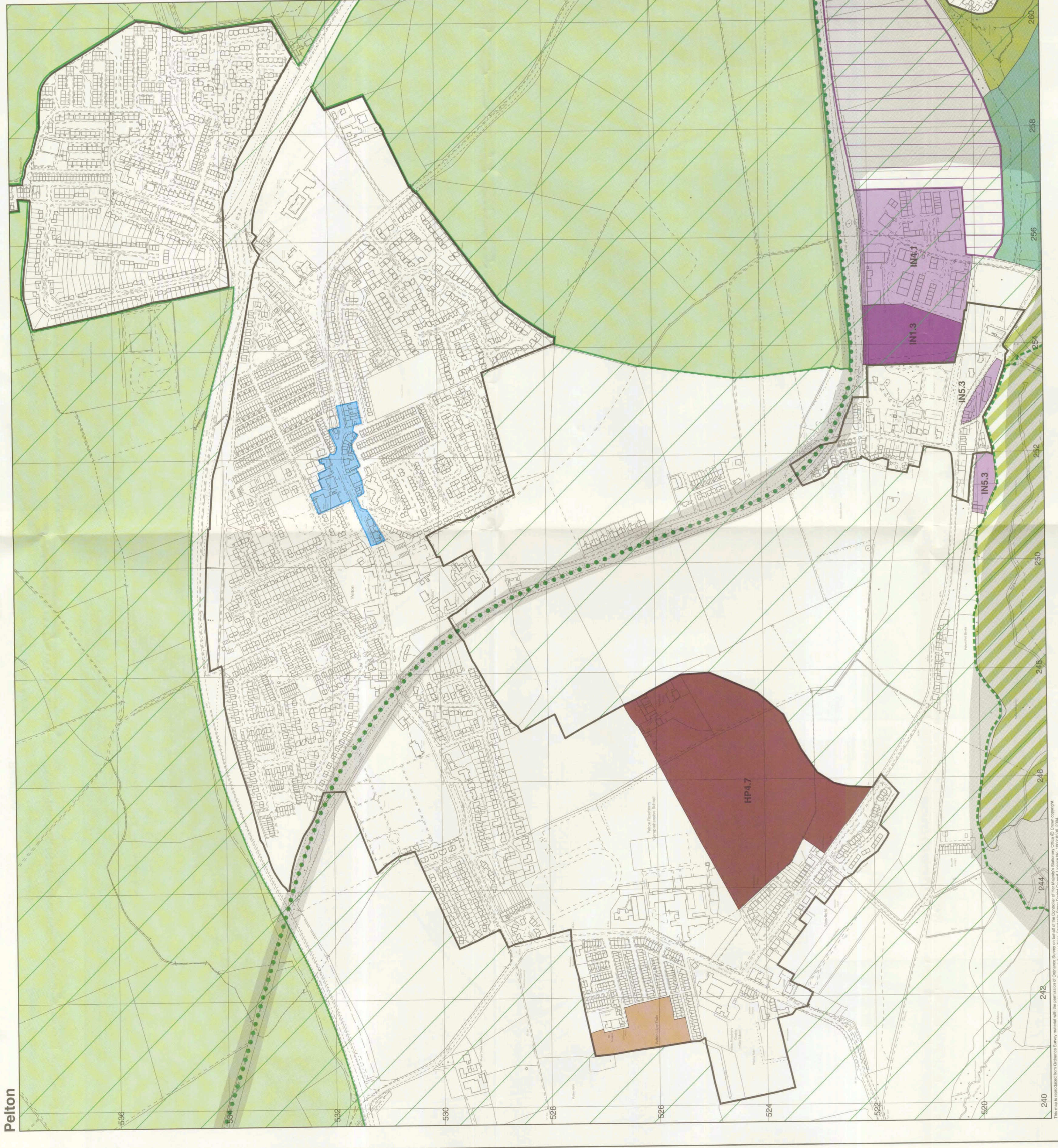
- | | | | |
|--|---------------------------------------|-----------------|-------------------------------|
| Retailing | Natural Environment | Industry | Recreation and Leisure |
| HP14, R1, R2, R3, TC1, T5 | NE5, NE4, NE3, NE6, RL10 | IN1 | RL1, R2, RL3 |
| TC3 | County Wildlife Sites | IN2 | Recreation Museum |
| | NEP | IN3 | Great North Forest |
| Primary Shopping Frontage | Coastal/Geomorphological Sites | IN4 | IN5 |
| RP1, RP2, RP3, RP4, RP7 | NE8, NE9 | IN5 | IN6 |
| Secondary Shopping Frontage | Local Sites of | IN6 | IN7 |
| R7, R8, R9, R16, R17, R18 | Nature Importance | IN7 | IN8 |
| Local Retailing Centres | NEB | IN8 | IN9 |
| R1, R2, R3, R4, R5, R6, R10, R11, R12, R13, R14, R15, R16, R17, R18, R19 | Wildlife Corridors | IN9 | IN10 |
| | NEC | IN10 | IN11 |
| | Ancient Woodlands | IN11 | IN12 |
| | NE10 | IN12 | IN13 |
| | Area of High Landscape Value | IN13 | IN14 |
| | NE15 | IN14 | IN15 |
| | Environmental Action Areas | IN15 | IN16 |
| | NE16, BE20 | IN16 | IN17 |
| | Train Station Action Area | IN17 | IN18 |
| | BE1 | IN18 | IN19 |
| | | IN19 | IN20 |
| | | IN20 | IN21 |
| | | IN21 | IN22 |
| | | IN22 | IN23 |
| | | IN23 | IN24 |
| | | IN24 | IN25 |
| | | IN25 | IN26 |
| | | IN26 | IN27 |
| | | IN27 | IN28 |
| | | IN28 | IN29 |
| | | IN29 | IN30 |
| | | IN30 | IN31 |
| | | IN31 | IN32 |
| | | IN32 | IN33 |
| | | IN33 | IN34 |
| | | IN34 | IN35 |
| | | IN35 | IN36 |
| | | IN36 | IN37 |
| | | IN37 | IN38 |
| | | IN38 | IN39 |
| | | IN39 | IN40 |
| | | IN40 | IN41 |
| | | IN41 | IN42 |
| | | IN42 | IN43 |
| | | IN43 | IN44 |
| | | IN44 | IN45 |
| | | IN45 | IN46 |
| | | IN46 | IN47 |
| | | IN47 | IN48 |
| | | IN48 | IN49 |
| | | IN49 | IN50 |
| | | IN50 | IN51 |
| | | IN51 | IN52 |
| | | IN52 | IN53 |
| | | IN53 | IN54 |
| | | IN54 | IN55 |
| | | IN55 | IN56 |
| | | IN56 | IN57 |
| | | IN57 | IN58 |
| | | IN58 | IN59 |
| | | IN59 | IN60 |
| | | IN60 | IN61 |
| | | IN61 | IN62 |
| | | IN62 | IN63 |
| | | IN63 | IN64 |
| | | IN64 | IN65 |
| | | IN65 | IN66 |
| | | IN66 | IN67 |
| | | IN67 | IN68 |
| | | IN68 | IN69 |
| | | IN69 | IN70 |
| | | IN70 | IN71 |
| | | IN71 | IN72 |
| | | IN72 | IN73 |
| | | IN73 | IN74 |
| | | IN74 | IN75 |
| | | IN75 | IN76 |
| | | IN76 | IN77 |
| | | IN77 | IN78 |
| | | IN78 | IN79 |
| | | IN79 | IN80 |
| | | IN80 | IN81 |
| | | IN81 | IN82 |
| | | IN82 | IN83 |
| | | IN83 | IN84 |
| | | IN84 | IN85 |
| | | IN85 | IN86 |
| | | IN86 | IN87 |
| | | IN87 | IN88 |
| | | IN88 | IN89 |
| | | IN89 | IN90 |
| | | IN90 | IN91 |
| | | IN91 | IN92 |
| | | IN92 | IN93 |
| | | IN93 | IN94 |
| | | IN94 | IN95 |
| | | IN95 | IN96 |
| | | IN96 | IN97 |
| | | IN97 | IN98 |
| | | IN98 | IN99 |
| | | IN99 | IN100 |



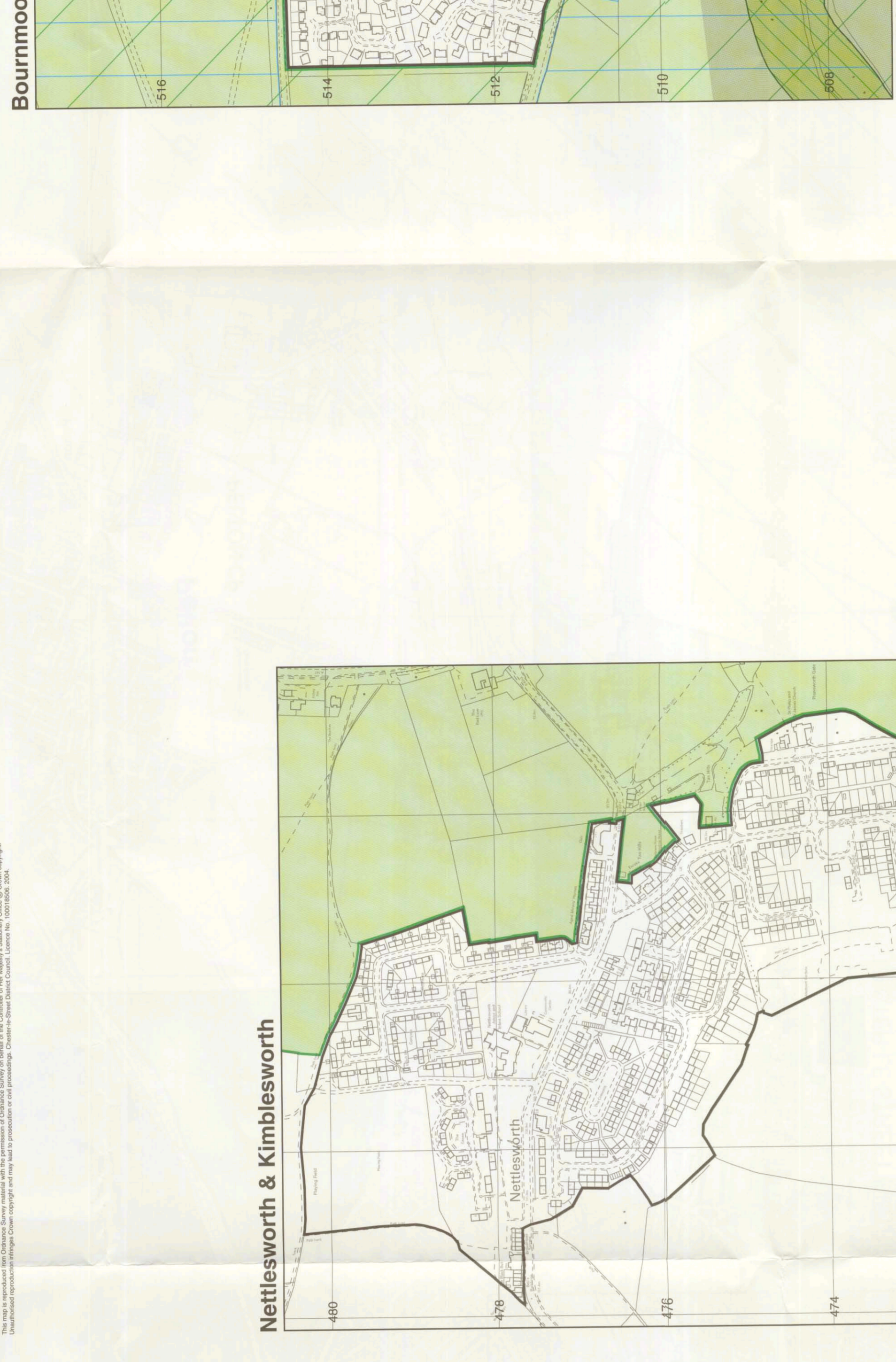
Ouston & Urpeth



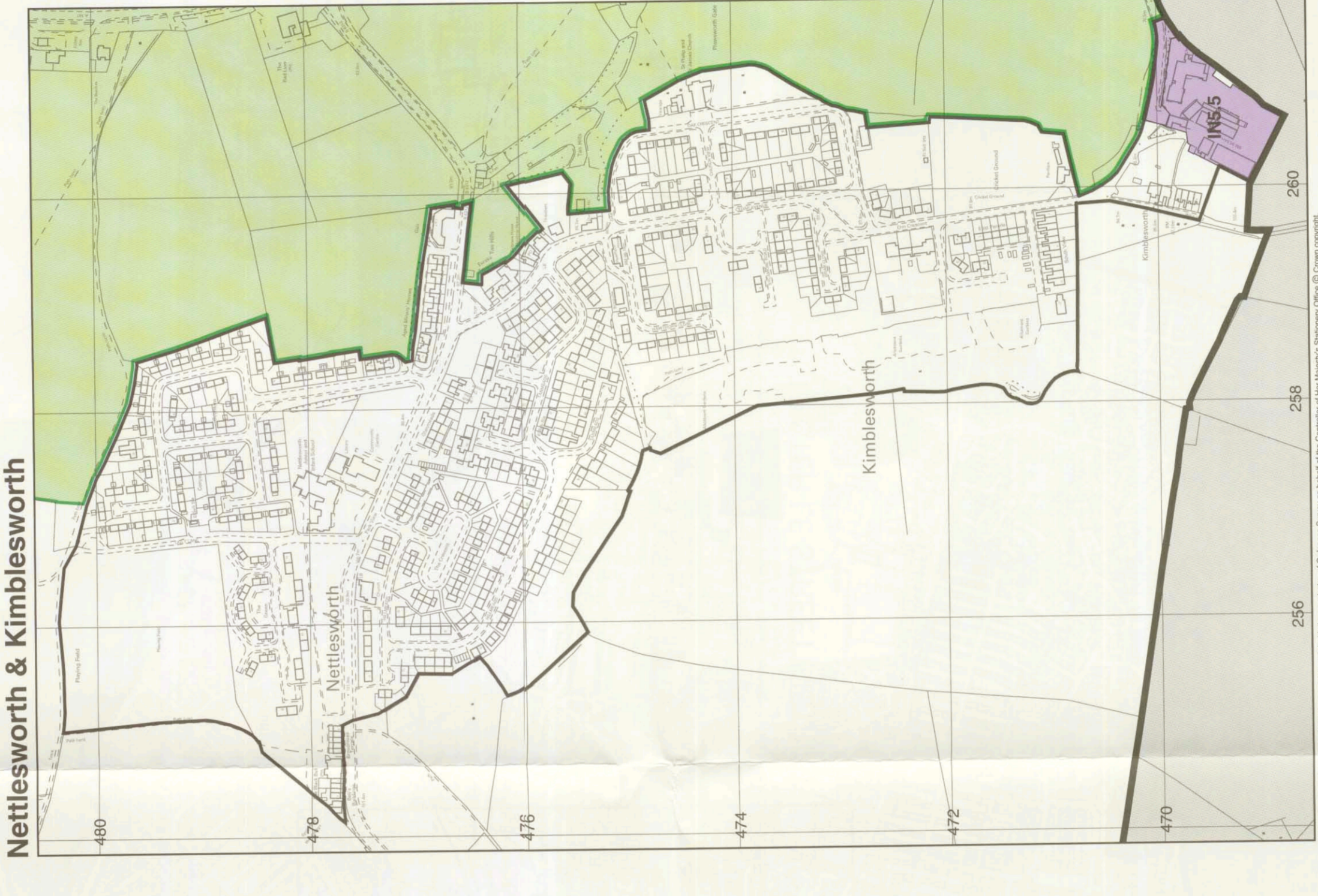
Beamish



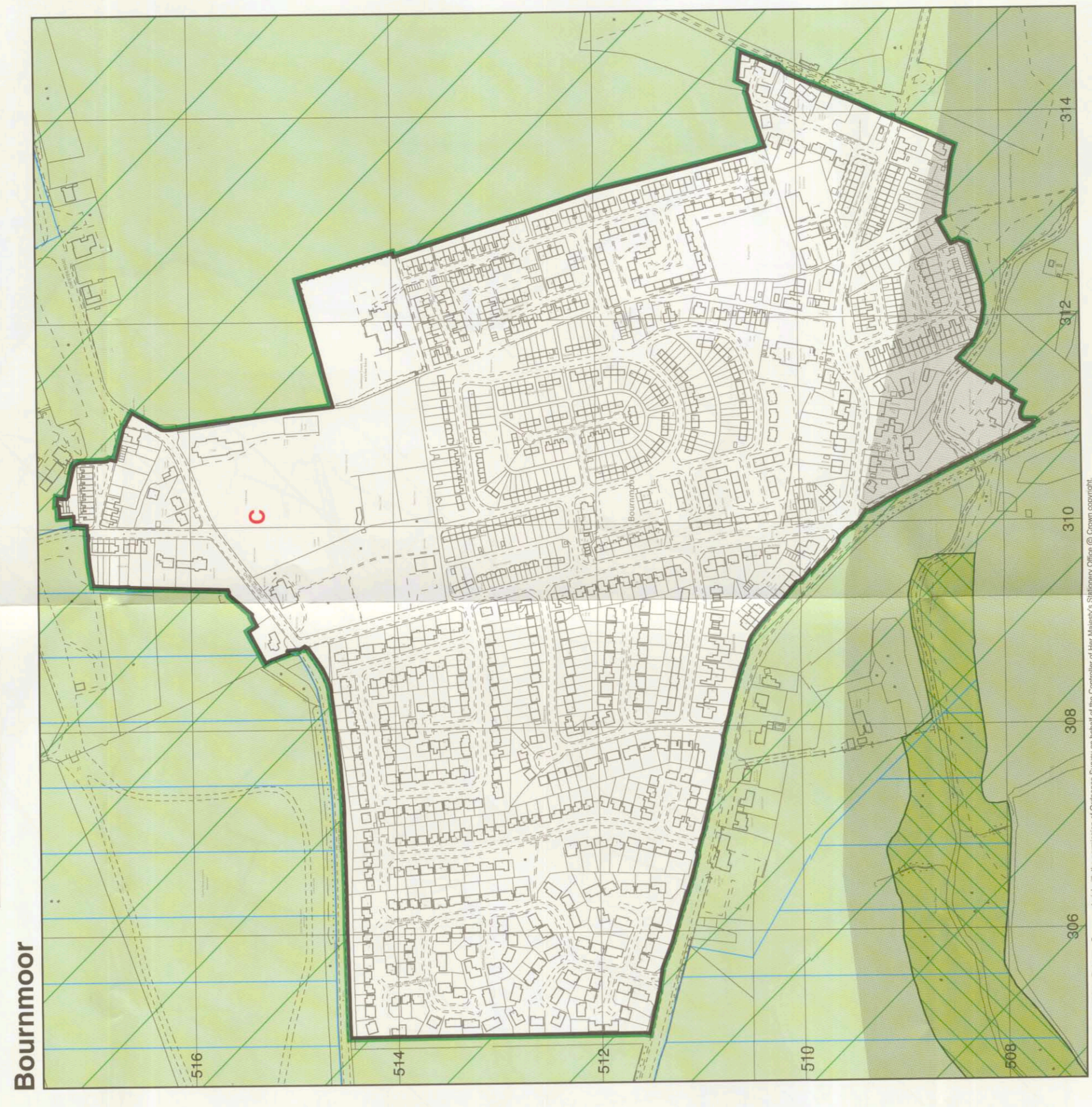
Pelton



Bourmoor



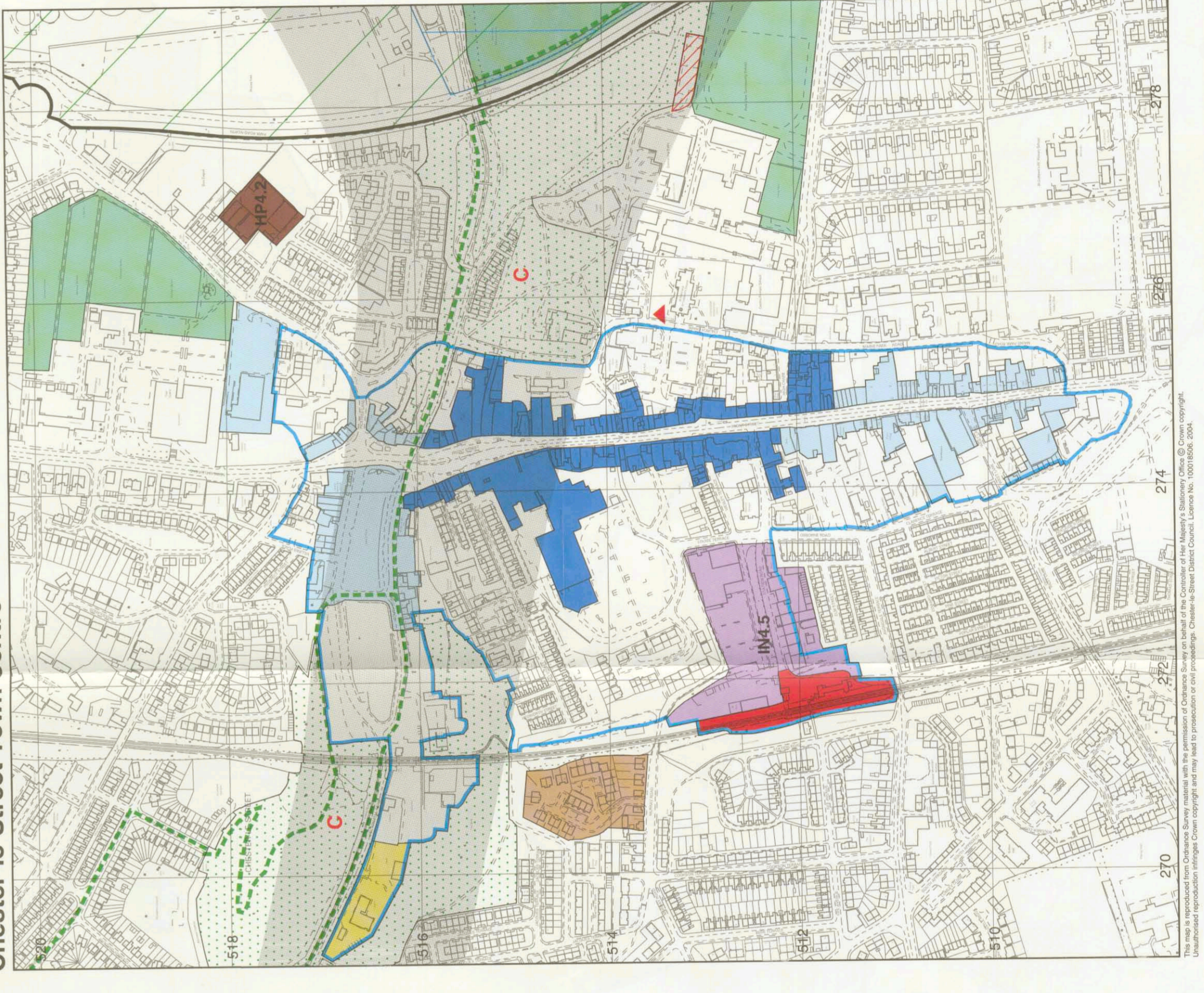
Nettlesworth & Kimblesworth



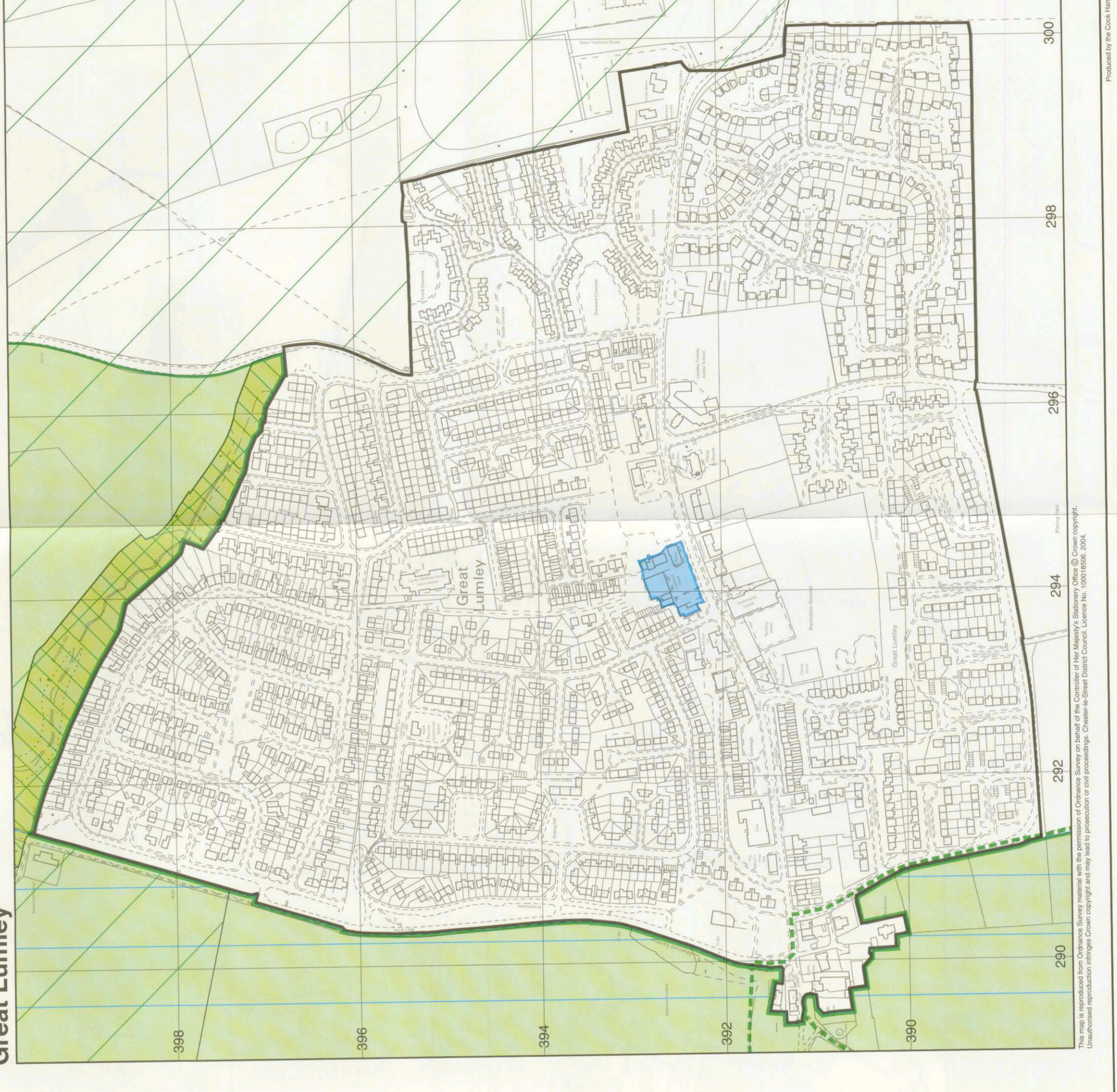
Fencehouses



Sacriston



Chester-le-Street Town Centre



Great Lumley