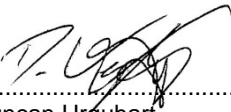
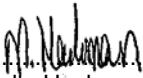


# Durham County Council: Detailed Assessment of Air Quality 2011 –New Elvet, Hallgarth and Church Street

Prepared by:   
Duncan Urquhart  
Senior Environmental Scientist

Checked by:   
Sam Pollard  
Principal Environmental Scientist

Approved by:   
Michelle Hackman  
Associate Director

Durham County Council: Detailed Assessment of Air **Quality 2011**

Rev No	Comments	Checked by	Approved by	Date
0	Draft – internal checking	SJP	MH	09/08/11
1	Final – draft submission to client	MH	MH	10/08/11
2	Final - amended submission to client	TAS	TAS	26/08/11

5th Floor, 2 City Walk, Leeds, LS11 9AR  
Telephone: 0113 391 6800 Website: <http://www.aecom.com>

Job No 60150242

Reference DCU

Date Created August 2011

This document has been prepared by AECOM Limited for the sole use of our client (the "Client") and in accordance with generally accepted consultancy principles, the budget for fees and the terms of reference agreed between AECOM Limited and the Client. Any information provided by third parties and referred to herein has not been checked or verified by AECOM Limited, unless otherwise expressly stated in the document. No third party may rely upon this document without the prior and express written agreement of AECOM Limited.

# Table of Contents

<b>1</b>	<b>Introduction .....</b>	<b>1</b>
1.1	Report Structure .....	1
<b>2</b>	<b>Guidance and Legislation.....</b>	<b>2</b>
2.1	Relevant Guidance and Policies .....	2
2.2	Nitrogen Dioxide .....	2
<b>3</b>	<b>Baseline .....</b>	<b>4</b>
3.1	Local Air Quality Management.....	4
3.2	Monitoring.....	4
3.3	Estimated Background Concentrations.....	5
<b>4</b>	<b>Assessment Methodology.....</b>	<b>7</b>
4.1	Assessment Procedure.....	7
4.2	AAQuIRE .....	7
4.3	Emissions Factors .....	7
4.4	NO <sub>x</sub> /NO <sub>2</sub> Ratios.....	7
4.5	Traffic Data .....	7
4.6	Meteorological Data .....	10
4.7	Sensitive Receptors.....	10
4.8	Model Error and Verification .....	11
<b>5</b>	<b>Detailed Assessment Model Results.....</b>	<b>12</b>
5.1	Predicted Concentrations .....	12
5.2	Summary .....	13
<b>6</b>	<b>Summary and Conclusions .....</b>	<b>14</b>
6.1	Recommendations.....	14
<b>7</b>	<b>References.....</b>	<b>15</b>
<b>8</b>	<b>Appendices.....</b>	<b>16</b>
	<b>Appendix A: AQMA Maps .....</b>	<b>16</b>
	<b>Appendix B: Monitoring Sites.....</b>	<b>17</b>
	<b>Appendix C: AAQuIRE Software .....</b>	<b>19</b>
	<b>Appendix D: Model Verification.....</b>	<b>20</b>
	<b>Appendix E: Model Outputs.....</b>	<b>22</b>
	Table 1: Non-continuous Monitoring in the City of Durham .....	5
	Table 2: Continuous Monitoring in the City of Durham .....	5
	Table 3: Grid Locations for Estimated Background Pollutant Concentrations.....	5
	Table 4: Estimated 2010 Annual Mean Background Pollutant Concentrations, Durham Centre .....	5
	Table 5: Traffic Flows Used in Model.....	8
	Table 6: Modelled Receptor Locations .....	11
	Table 7: Predicted 2010 Annual Mean Concentrations at Sensitive Receptors.....	12
	Table 8: Comparison of Modelled and Monitored NO <sub>2</sub> Concentrations .....	20
	Table 9: Determination of Modelled and Monitored Rd NO <sub>2</sub> and Modelled Rd NO <sub>x</sub> .....	21
	Table 10: Determination of the Adjustment Factor and Total Adjusted NO <sub>2</sub> .....	21
	Table 11: Statistical Analysis of Model .....	21
	Figure 1: Diurnal Vehicle Flow Profile for Modelled Roads.....	9
	Figure 2: Diurnal Vehicle Speed Profile for Modelled Roads .....	9
	Figure 3: Wind Rose for Newcastle Airport, 2010 .....	10
	Figure 4: Provisional Extent of AQMA Proposed in 2010 Progress Report .....	16
	Figure 5: Location of the Monitoring Sites in Durham City (East) .....	17

Figure 6: Location of Monitoring Sites in Durham City (West) .....	18
Figure 7: Total Modelled versus Monitored NO <sub>2</sub> .....	20
Figure 8: Total Modelled and Monitored NO <sub>2</sub> (after adjustment of road NO <sub>x</sub> ) .....	21
Figure 9: Annual Mean NO <sub>2</sub> Concentration, 2010.....	22

Capabilities on project:  
Environment

# 1 Introduction

AECOM were commissioned by Durham County Council unitary authority to undertake a Detailed Assessment of Air Quality for the City of Durham for several areas, outside the existing Air Quality Management Area (AQMA), where the 2011 Air Quality Progress Report (DCC, 2011) identified potential exceedences of the annual mean air quality objective for nitrogen dioxide (NO<sub>2</sub>).

The Council has declared an AQMA for NO<sub>2</sub> in parts of the city on the basis of previous detailed dispersion modelling and recent air quality monitoring. This report is intended to satisfy the council's Local Air Quality Management (LAQM) responsibilities by reviewing the extent of the Air Quality Management Area (AQMA) and to provide information to support the future local air quality strategy and action plans.

The Detailed Assessment was undertaken to assess the following roads outside the AQMA:

- New Elvet;
- Church Street; and
- Hallgarth.

Separate Detailed Assessments have been undertaken for the following areas, which will be reported separately from this report:

- Claypath.
- Crossgate and Nevilles Cross, to the west of the City Centre, where monitoring has recorded exceedences of the annual mean NO<sub>2</sub> objective. This is a complex area of street canyons where relatively high concentrations of NO<sub>2</sub> have been recorded in close proximity to very low concentrations. Therefore, in accordance with the 2011 Progress report, additional monitoring is currently being undertaken, which will be used for verification purposes within a Detailed Assessment.

## 1.1 Report Structure

- Section 2 provides an overview of air quality guidance and legislation;
- Section 3 presents the current air quality in the City of Durham based on recent monitoring data and previous LAQM reports;
- Section 4 explains the methodology which was followed in this assessment;
- Section 5 presents the results of the Detailed Assessment; and
- Section 6 concludes the assessment.

Capabilities on project:  
Environment

## 2 Guidance and Legislation

### 2.1 Relevant Guidance and Policies

#### Overview of Relevant Air Quality Legislation and Policy

The provisions of Part IV of the Environment Act 1995 establish a national framework for air quality management, which requires all local authorities in England, Northern Ireland, Scotland and Wales to conduct local air quality reviews. Section 82(1) of the Act requires these reviews to include an assessment of the current air quality in the area and the predicted air quality in future years.

#### The UK Air Quality Strategy

Should the reviews indicate that the objectives prescribed in the Air Quality Strategy will not be met at relevant locations; the local authority is required to designate an Air Quality Management Area (AQMA). Action must then be taken at a local level to ensure that air quality in the area improves.

The Air Quality Strategy identifies several ambient air pollutants that have the potential to cause harm to human health. These pollutants are associated with local air quality issues, with the exception of ozone, which is recognised as being a regional problem.

The standards and objectives apply at locations where the public may be exposed; relevant exposure is defined by EPUK (EPUK, 2010):

*“Guidance from the UK Government and Devolved Administrations makes clear that exceedences of the health based objectives should be assessed at outdoor locations where members of the public are regularly present over the averaging time of the objective.”*

#### Local Air Quality Management Review and Assessment

It is the responsibility of the Local Authority to undertake Review and Assessment work in accordance with the regime defined in the technical Guidance LAQM.TG(09). The purpose of the regime is to update and publish information regarding local air quality monitoring and to identify possible areas of exceedence through screening and modelling.

Part of the regime is to undertake Detailed Assessment of possible areas of exceedence, which may be subsequently declared as an AQMA. The purpose of the Detailed Assessment is to identify with reasonable certainty whether or not a likely exceedence of the national objective (an annual mean concentration of 40 microgrammes/m<sup>3</sup> for Nitrogen Dioxide) will occur within the possible area of exceedence. To fulfil this requirement the Detailed Assessment is required to determine the magnitude and geographical extent of the exceedence.

### 2.2 Nitrogen Dioxide

The Government and the Devolved Administrations adopted two Air Quality Objectives for NO<sub>2</sub> to be achieved by the end of 2005. In 2010, mandatory EU air quality limit values for NO<sub>2</sub> should apply in the UK (although the UK government is applying for derogation until 2015). The EU limit values for NO<sub>2</sub> are the same as the national objectives for 2005 (HMSO, 2010):

- An annual mean concentration of 40 µg/m<sup>3</sup>; and
- An hourly mean concentration of 200 µg/m<sup>3</sup>, to be exceeded no more than 18 times per year.

The number of exceedences of the hourly objective show considerable year-to-year variation, and is driven by meteorological conditions, which give rise to winter episodes of poor dispersion and summer oxidant episodes.

NO<sub>2</sub> and nitric oxide (NO) are both oxides of nitrogen, and are collectively referred to as NO<sub>x</sub>. All combustion processes produce NO<sub>x</sub> emissions, largely in the form of NO, which is then converted to NO<sub>2</sub>, mainly as a result of its reaction with ozone in the atmosphere. Therefore the ratio of NO<sub>2</sub> to NO is primarily dependent on the concentration of ozone and the distance from the emission source.

Capabilities on project:  
Environment

In recent years a trend has been noted whereby NO<sub>2</sub> concentrations have not been falling, or have been increasing, at certain roadside monitoring sites, despite emissions of NO<sub>x</sub> falling. The 'direct NO<sub>2</sub>' phenomenon is having an increasingly marked effect at many urban locations around the country and must be considered when undertaking modelling studies and in the context of future local air quality strategy. At the end of September 2010 Defra released a brief FAQ (Frequently Asked Question) note on the issue (Defra, 2010), acknowledging that NO<sub>2</sub> concentrations have not fallen as projected over the past 6-8 years.

The note acknowledged that the reasons for the disparity were not fully understood, and hence stated that updated LAQM guidance will not be released until the reasons are fully understood. Subsequently, Defra published a draft report in March 2011 (Defra, 2011c), which discusses possible reasons for the disparity between modelling and monitoring in detail, such as degradation of exhaust catalysts in early Euro-compliant vehicles, understanding of fleet profiles, the relationship between speed and emissions, and the different emissions contribution from petrol and diesel vehicles. This is discussed further in Section 4.3, in regard to how it has been considered in the modelling assessment.

Capabilities on project:  
Environment

## 3 Baseline

### 3.1 Local Air Quality Management

Durham County Council (DCC) is a 'unitary' Council, established on 1<sup>st</sup> April 2009 when the seven former District and Borough Councils within the County merged with the previous Durham County Council. This authority is now responsible for Review and Assessment duties for the county administrative area, including the City of Durham.

With regard to the City of Durham, the declaration of an AQMA was recommended in 2008, however due to the Council reorganisation, it was not declared until May 2011. The extent of the AQMA is provided in Appendix A, Figure 4 and is composed of a single area including Milburngate, Framwellgate Peth, Milburngate Bridge, Leazes Road and Gilesgate.

The 2011 Progress Report reviewed monitoring data from the local NO<sub>2</sub> diffusion tube network, which was significantly extended in 2011. This report identified exceedences of the annual mean NO<sub>2</sub> objective at areas outside the AQMA and concluded that it would be necessary to undertake the following Detailed Assessments:

- Claypath, in the city centre
- New Elvet, Church Street and Hallgarth, south of the city centre
- Crossgate lights, Nevilles Cross, The Peth and Colpitts Terrace, to the west of the city centre.

This report considers New Elvet, Church Street and Hallgarth, where monitoring has recorded NO<sub>2</sub> concentrations in excess of 40 µg/m<sup>3</sup> and potential exceedences of the annual mean objective at residential properties outside the AQMA.

### 3.2 Monitoring

The Council currently undertake monitoring for NO<sub>2</sub> using passive diffusion tubes (Table 1). Figures 5 and 6 in Appendix B provide the monitoring locations of the current diffusion tube network.

The following sites exceeded the annual mean objective in 2010:

- D8 (formerly D13) Highgate north, located within the extent of the AQMA;
- D20 (formerly D14) Gilesgate, located within the extent of the AQMA;
- D12 (formerly D15) Colpitts Terrace, located outside of the AQMA;
- D1 (formerly D20) Dragon Lane, located within the extent of the AQMA;
- D11 Crossgate Lights. This is a new site installed outside the AQMA in 2010, near Colpitts Terrace;
- D14 The Gates, located within the extent of the AQMA;
- D43 The Peth. This is a new site installed outside the AQMA in 2010, on Crossgate Peth near Colpitts Terrace;
- D19 Hallgarth St west. This is a new site installed outside the AQMA in 2010, at the junction of New Elvet and Church Street. This site was located on a traffic island and was therefore not representative of relevant exposure. The diffusion tube at this location was altered at the end of May 2011 from the central traffic island to the façade of No 2 Church Street and therefore is now representative of relevant exposure.

The diffusion tube network was reviewed and extended in 2010 and again at the start of 2011.

A continuous NO<sub>2</sub> analyser was installed at a roadside location on Gilesgate in 2011 (see Table 2). This will be used in the future to determine a local diffusion tube bias adjustment factor, although as only a few months of data were available at the time of writing it was not used for the purposes this study.

Previous monitoring in Durham City included two urban background sites; Byland Lodge and McNally Place; however, these were discontinued in 2007. A new monitoring location at an urban background site was installed at The Sands (D59) in 2011, although it was not used in this study as sufficient data was not available.

Five of the diffusion tube monitoring sites are within, or near, the study area and were used for model verification. The data for these sites are provided in Table 1.

In addition to the locations and data in Table 1, the network was amended in 2011 with new monitoring locations. Whilst these cannot be used for verification purposes, due to limited amounts of data collected so far, they can be used subjectively to indicate



Capabilities on project:  
Environment

possible issues. The diffusion tube at Hallgarth Street West (D19) clearly exceeded the annual mean objective in 2010, although it was located on a traffic island and was not considered to represent relevant exposure. Therefore, this tube was relocated at the end of May 2011 to a nearby residential facade at No.2 Church Street in order to represent relevant exposure where it recorded uncorrected values of 39.8  $\mu\text{g}/\text{m}^3$  in June and 66.2  $\mu\text{g}/\text{m}^3$  in July.

In addition, a new monitoring location was installed in front of the student accommodation on Elvet Crescent at the beginning of June 2011. The uncorrected values were 76.4  $\mu\text{g}/\text{m}^3$  in June and 34.3  $\mu\text{g}/\text{m}^3$  in July.

Table 1: Non-continuous Monitoring in the City of Durham

Former ID	Current ID	Location	Type	OS Grid Reference		Annual Mean NO <sub>2</sub> , $\mu\text{g}/\text{m}^3$	
				X	Y	2009	2010
D16	D15	New Elvet	Roadside	427628	542368	<b>41.6</b>	38.8
D17	D16	Church Street	Roadside	427657	542003	35.9	32.7
-	D17	Church Street Head	Kerbside	427531	541670	-	35.1
-	D18	Hallgarth St east	Kerbside	427847	541742	-	28.8
-	D19	Hallgarth St west	Kerbside	427688	542098	-	<b>43.0</b>

Note: Exceedences of the UK air quality standard objective highlighted in bold. .

Table 2: Continuous Monitoring in the City of Durham

ID	Location	Type	OS Grid Reference	
			X	Y
D60	Gilesgate (operational since April 2011)	Roadside	428535	542750

### 3.3 Estimated Background Concentrations

A large number of sources of air pollutants exist which individually may not be significant, but collectively, over a large area, need to be considered. The concentrations calculated by the model due to vehicle emissions can then be added to background concentrations to give the total concentration.

Monitored pollutant concentrations at locations away from the direct influence of roads or industrial sources ('background' locations) are discussed above in Section 3.2. However modelled estimates of background air quality concentrations are also provided on the Defra Air Quality website (Defra, 2011b) for each 1 km Ordnance Survey (OS) square in the UK. The estimated background concentrations for the OS grid squares containing the study area are provided in Tables 3, 4 and 5. These data were downloaded in January 2011.

As discussed in local air quality guidance, LAQM.TG(09) (Defra, 2009a), for the purpose of modelling, background contribution of modelled road sources must be discounted from the total background pollutant concentrations, to give 'adjusted' values. The adjusted NO<sub>2</sub> concentrations for each year were determined from the available NO<sub>x</sub> data, using version 1.1 of the 'Background NO<sub>2</sub> Calculator' tool provided on the Defra website.

Table 3: Grid Locations for Estimated Background Pollutant Concentrations

Location	Major Roads Included in Grid	OS Grid Square Centre	
		X	Y
Durham Centre	Millburngate, Framwellgate Peth, New Elvet	427500	542500

Table 4: Estimated 2010 Annual Mean Background Pollutant Concentrations, Durham Centre

Pollutant	Total, $\mu\text{g}/\text{m}^3$	Adjusted, $\mu\text{g}/\text{m}^3$
NO <sub>x</sub>	23.5	19.0
NO <sub>2</sub>	16.4	13.0

The estimated background concentrations in Table 4 are well below the annual mean objective, although it is noted that the square centred over the centre of Durham indicates generally higher concentrations, which are due to a greater density of various emission sources.

Capabilities on project:  
Environment

The Council has not undertaken background monitoring in the city in 2009, the modelled year, and so it was necessary to use the estimated background pollutant concentrations given in Table 4. These values are broadly similar to those monitored at Byland Lodge and McNally Place in 2006, of  $18.5 \mu\text{g}/\text{m}^3$  and  $20.3 \mu\text{g}/\text{m}^3$  respectively.

Capabilities on project:  
Environment

## 4 Assessment Methodology

### 4.1 Assessment Procedure

The modelling and assessment was undertaken in accordance with the methodology defined in technical guidance LAQM.TG(09) (Defra, 2009b). The detailed modelling assessment considered the following areas which are outside the existing AQMA, which have recorded locations exceeding, or potentially exceeding, the annual mean NO<sub>2</sub> objective:

- New Elvet;
- Hallgarth; and
- Church Street.

### 4.2 AAQuIRE

The AAQuIRE dispersion modelling software, developed by AECOM (formerly Faber Maunsell Ltd), was used for the detailed assessment.

AAQuIRE uses the CALINE4 model for the dispersion of road-traffic emissions and AERMOD for all other sources. Both of these models are fully validated and have been extensively used worldwide. These are relatively complex models designed for detailed assessment of local areas, which are used within AAQuIRE for both local and larger scale studies.

Further details are provided in Appendix C.

### 4.3 Emissions Factors

As discussed in Section 2.2, in recent years it has been noted that NO<sub>2</sub> concentrations have typically not been decreasing, particularly at roadside monitoring sites, despite emissions of NO<sub>x</sub> generally considered to be decreasing. At the end of September 2010 Defra released a brief FAQ note on the issue (Defra, 2010), acknowledging that NO<sub>2</sub> concentrations have not decreased fallen as projected over the past 6-8 years. In March 2011 (Defra, 2011c) a detailed report was published discussing the reasons for the discrepancy in predictions, although this was published after much of the modelling work for this project had been completed.

Therefore, for the purposes of this modelling study, the vehicle emissions database that is interrogated by AAQuIRE has been altered so that NO<sub>x</sub> emissions from diesel Euro 2-5 vehicles were equivalent to NO<sub>x</sub> emissions from diesel Euro 1 vehicles, which was discussed with the Council during a meeting prior to undertaking the work. This reflects the current understanding that it is thought likely that vehicle emissions factors for diesel vehicles underestimate NO<sub>x</sub> emissions in 'real-world' conditions. In particular, it is thought likely that diesel Euro 2, 3, 4 and 5 vehicles emit similar quantities of NO<sub>x</sub> as Euro 1 engines. At the time of writing (March 2011) this was considered to be the most accurate and representative method of predicting current and future NO<sub>x</sub> and NO<sub>2</sub> concentrations.

### 4.4 NO<sub>x</sub>/NO<sub>2</sub> Ratios

The proportion of NO<sub>2</sub> in NO<sub>x</sub> varies greatly with location and time according to a number of factors including the amount of oxidant available and the distance from the emission source. NO<sub>x</sub> concentrations are expected to decline in future years due to falling emissions, therefore NO<sub>2</sub> concentrations will not be limited as much by ozone and consequently it is likely that the NO<sub>2</sub>/NO<sub>x</sub> ratio will increase in the future. However, Defra has recently acknowledged that NO<sub>2</sub> concentrations have not been dropping as expected, as discussed above in Section 2.2 and 4.3, and has advised local authorities to consider this when undertaking modelling studies and when planning for the future.

In this study modelled NO<sub>x</sub> values were converted to NO<sub>2</sub> using the 'NO<sub>x</sub> to NO<sub>2</sub>' calculator version 2.1, released in January 2010, and available on the Defra local air quality management website (Defra, 2010b). The year and region for which the modelling has been undertaken are specified and local factors, such as an appropriate factor of NO<sub>x</sub> emitted as NO<sub>2</sub>, and the traffic mix set to all UK traffic, are used in the calculation.

### 4.5 Traffic Data

Traffic data was provided by the DCC Traffic Control group in the Regeneration & Economic Development department.

The data was collected by automatic units and recorded hourly total flows to enable Annual Average Daily Traffic (AADT) flows to be determined.

Capabilities on project:  
Environment

Speed data were recorded at several sites, but where it was not available assumptions were made based on national speed limits. The speed data were also adjusted to take account of slowing at junctions and roundabouts and where the gradient of the road increases (by reducing the speed, the effect of engines being under greater load is accounted for).

Table 5: Traffic Flows Used in Model

Model Road ID	Recording Date	AADT <sup>A</sup>	HGV %	Speed (kph) <sup>B</sup>
Milburngate Bridge EB	2010	24,717	3.8	46
Milburngate Bridge WB	2010	24,831	3.8	43
Hallgarth Street	2010	6,897	5.0	40
New Elvet	2010	15,634	5.0	48
Leazes Road	2010	39,850	4.1	56
Church Street	2008	9,822	5.0	48
Old Elvet	2006	26,893	0	48

Note: <sup>A</sup> the daily flows are subject to the hourly flow profile in Figure 1. <sup>B</sup> Average speeds are subject to the profile in Figure 2, and slowing at junctions and on steep hills.

The data were also used to determine daily average speed and flow profiles (Figure 1 and 2), which were assigned to the modelled roads. These profiles account for congestion when peak traffic times results in greater numbers of vehicles and lower speeds:

- Figure 1 illustrates the daily flow profile, which was very similar at all of the roads for which these data were available. Flows increase substantially at 06:00 to a morning rush-hour peak at 08:00, then increase further through the day to an afternoon peak at 16:00 before tailing-off slowly during the evening. The profile applies a fraction of 1 to the modelled AADT for each hour of the day.
- Figure 2 illustrates the speed profile of roads for which hourly speed data were available. Typically, speeds reduce due to queuing around 8am and 4-6pm, which coincides with rush hour. The profile applies a factor to the speed for each hour of the day, where a factor greater than 1 increases the speed, and less than 1 decreases it.

Capabilities on project:  
Environment

Figure 1: Diurnal Vehicle Flow Profile for Modelled Roads

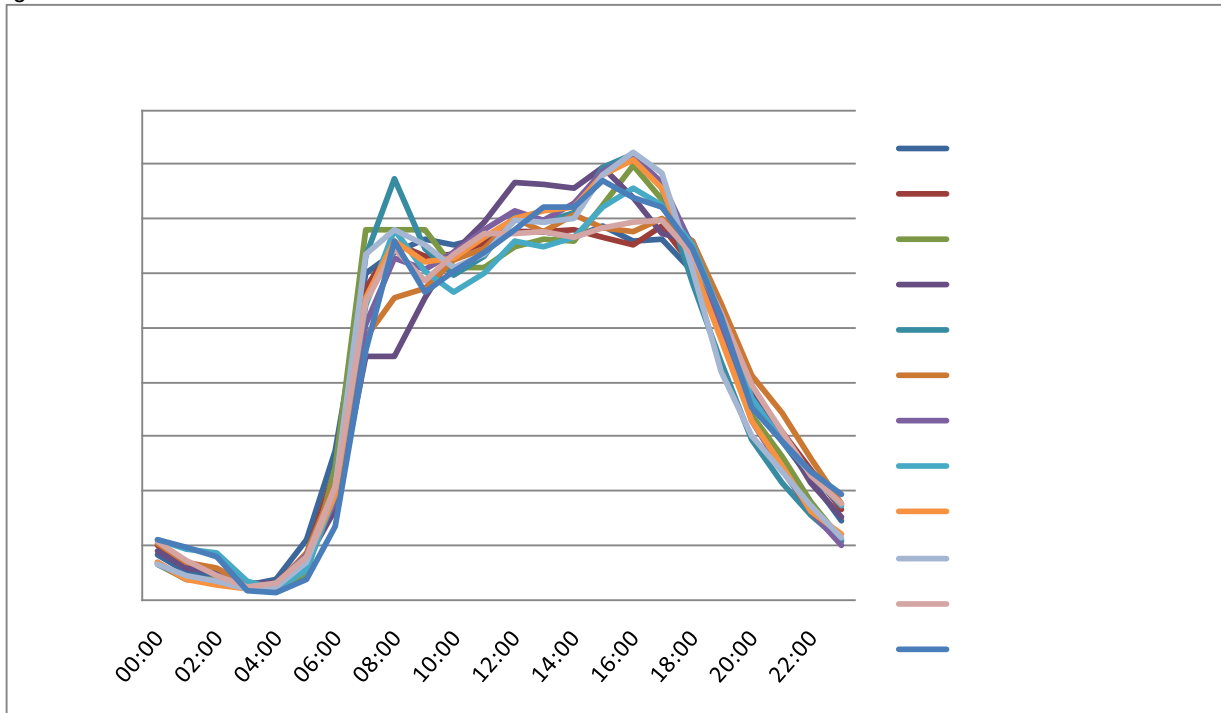
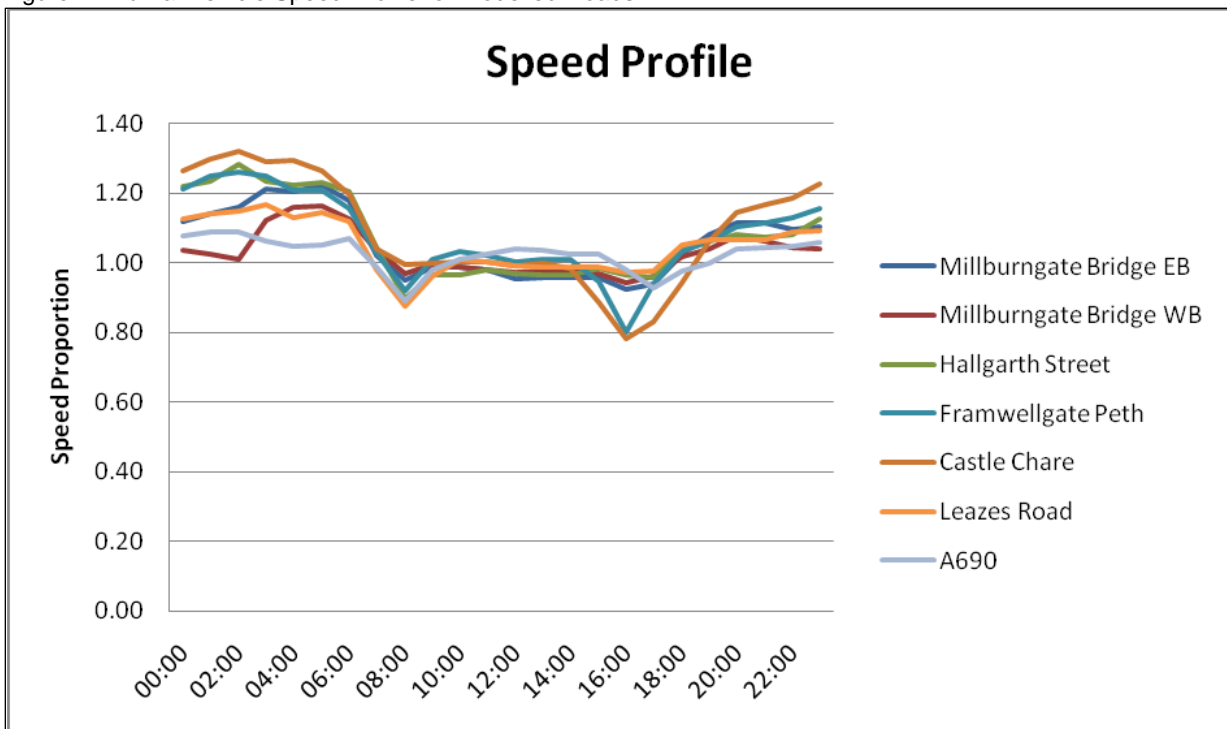


Figure 2: Diurnal Vehicle Speed Profile for Modelled Roads



Capabilities on project:  
Environment

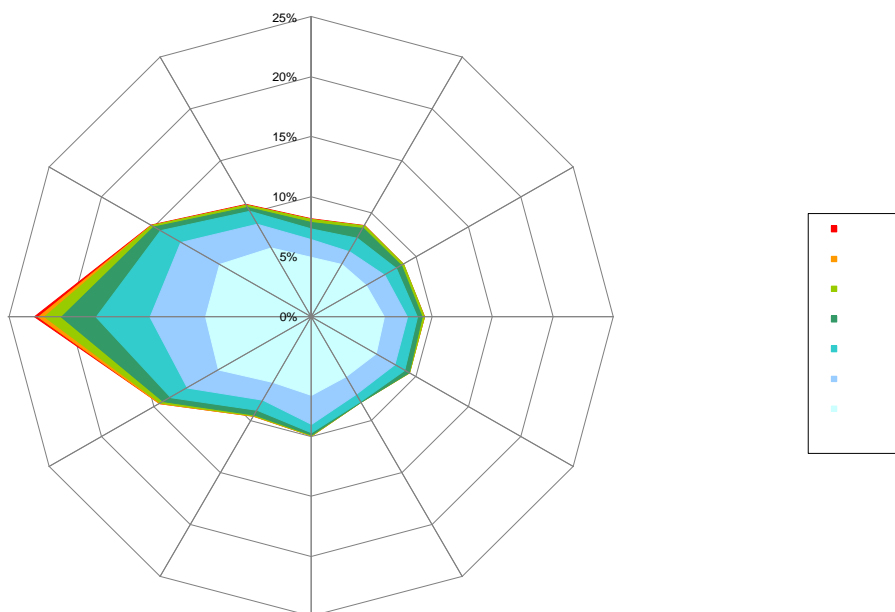
#### 4.6 Meteorological Data

Meteorological data used in the model were obtained for Newcastle Airport for the base study year, 2010. This is the nearest recording station to Durham, located approximately 20 miles to the north, and is considered to be the most appropriate for the modelling assessment.

The windrose for 2010 is presented in Figure 3 and shows that the predominant wind direction is from the west. The 2010 conditions did not display the typical prevailing south-westerly component, although all directions occurred for periods throughout the year.

The 2010 meteorological conditions have been associated with atypically high concentrations of NO<sub>2</sub> reported by local authorities throughout the UK. Whilst this trend was not specifically identified in Durham City, an essential part of the model was the verification with local monitoring data recorded during the same year.

Figure 3: Wind Rose for Newcastle Airport, 2010



#### 4.7 Sensitive Receptors

Specific locations were selected that were considered to be representative of relevant exposure, in accordance with the definition discussed in Section 2.1.2. The locations of the three selected sensitive receptors and the three DCC monitoring locations are presented in Table 6 and Appendix E, Figure 9.

The concentrations predicted at the diffusion tube monitoring locations were used for model verification, as discussed in Section 4.8 and Appendix D.

Capabilities on project:  
Environment

Table 6: Modelled Receptor Locations

ID	Receptor	OS Grid Coordinate	
	Location	X	Y
D15	New Elvet	427628	542368
D16	Church Street	427657	542003
D17	Church Street Head	427531	541670
D18	Hallgarth St East	427847	541742
D19	Hallgarth St west	427688	542098
E1	School, Church St	427592	541791
E2	New Elvet/Old Elvet Junction	427620	542315
E3	Hallgarth	427829	541809
E4	New Elvet/Church Street Junction	427693	542140

#### 4.8 Model Error and Verification

When using modelling techniques to predict concentrations, it is necessary to make a comparison between the modelling results and the monitoring data, to ensure that the model is reproducing actual observations. Modelling results are subject to systematic and random error; systematic error arises due to many factors, such as uncertainty in the traffic data and the composition of the vehicle fleet, and uncertainty in the meteorological dataset. This can be addressed and, if necessary, adjusted for by comparison with monitoring data.

The model was adjusted using monitoring data from 2010. This methodology was consistent with LAQM.TG(09), whereby traffic data and meteorology from 2010 were compared directly with 2010 monitoring data. In accordance with the methodology discussed in LAQM.TG(09), an adjustment factor of 1.6 was applied to modelled NO<sub>x</sub> concentrations in the study area.

Further details of the verification process are in Appendix D.

Capabilities on project:  
Environment

## 5 Detailed Assessment Model Results

### 5.1 Predicted Concentrations

Detailed dispersion modelling was undertaken using the AAQuIRE dispersion model. The model output has been verified by comparison with local monitoring results and adjusted accordingly, as detailed in Appendix D.

#### Modelled Areas

Predicted annual mean concentrations of NO<sub>2</sub> within the study area are presented in Appendix E, Figure 9. The plot indicates the areas where annual mean NO<sub>2</sub> concentrations are predicted to exceed the 40 µg/m<sup>3</sup> objective (indicated in yellow), plus one standard deviation (indicated in green and orange), or two standard deviations (indicated in blue and red).

The value for one standard deviation of 2.3 µg/m<sup>3</sup> was calculated in the verification procedure by comparison with the diffusion tube monitoring sites within the study area. A lower value indicates better confidence in the results, and it is considered that this value gives reasonably high confidence, with all of the predicted values within 15% of the monitored values, and all but one within 10%.

The results of this assessment indicate that the annual mean objective is unlikely to be exceeded at any location of relevant exposure within the study area. The highest concentrations within one or two standard deviations were predicted to occur at:

- the junction of Hallgarth Street and Church Street, leading north approximately 100m, with higher concentrations predicted on the upwind side of the street towards the east, although it does not extend as far as the facades of the nearest properties;
- the junction of New Elvet and Old Elvet, and leading north across the bridge towards the junction with Millburngate;
- the junction of Church Street and Stockton Road.

#### Sensitive Receptors

The locations of the receptors where annual mean concentrations were predicted are presented in Appendix E and in Table 7, below.

Five of the modelled receptors represent local air quality monitoring locations, and four additional receptor locations were also modelled. These locations are mostly sites of relevant exposure located on the facade of residential properties, with only D15 and D19 not at a facade. The annual mean concentrations recorded in the study area are presented in Section 3.2, Table 1.

Hallgarth Street West (D19) is the only location where values in excess of the annual mean objective were predicted, although this is located on a traffic island in the centre of the road and is therefore not a location of relevant exposure. As discussed in Section 3.2, this location was closed in May 2011 and the tube was relocated to No.2 Church Street, where it recorded two months of uncorrected values near, or exceeding 40 µg/m<sup>3</sup>.

The New Elvet location at the junction with Old Elvet and New Elvet (D15) also predicted a value very close to the annual mean objective, although this is a kerbside location, rather than on a facade. However, the plotted results (discussed in Section 5.1.1) indicate that an exceedence is unlikely to occur at the nearest facade to this location.

Table 7: Predicted 2010 Annual Mean Concentrations at Sensitive Receptors

Receptor ID	Location	OS Grid Co-ordinates		Annual Mean NO <sub>2</sub> Concentration (µg/m <sup>3</sup> )
		X	Y	
D15	New Elvet	427628	542368	39.0
D16	Church Street	427657	542003	30.0
D17	Church Street Head	427531	541670	36.0
D18	Hallgarth St East	427847	541742	25.1
D19	Hallgarth St west	427688	542098	44.6
E1	School, Church St	427592	541791	27.2
E2	New Elvet/Old Elvet Junction	427620	542315	22.5
E3	Hallgarth	427829	541809	26.6
E4	New Elvet/Church Street Junction	427693	542140	29.3

Note: D19, Hallgarth Street, is not a sensitive receptor location as it is located on a traffic island. D15, New Elvet, is also not considered to be a sensitive receptor location as it is located on a kerbside lamp post.



Capabilities on project:  
Environment

## 5.2 Summary

The model indicates that concentrations of NO<sub>2</sub> at all modelled locations of relevant exposure are predicted to be below the 40 µg/m<sup>3</sup> objective.

Annual mean NO<sub>2</sub> concentrations are predicted to be within one standard deviation of the air quality objective at the junction of New Elvet and Old Elvet, and near one or two residential properties at the southern end of Church Street. Whilst this indicates that exceedences may occur in these locations, it is not considered to be likely.

The model also predicted an area of elevated concentrations at the junction of Church Street and Hallgarth, although it was not predicted that these high values will result in an exceedence at a facade. However, a short period of monitoring at two new locations in June and July 2011, at No.2 Church Street and Elvet Crescent, indicate that this area of high NO<sub>2</sub> concentrations might extend as far as nearby facades. At this time the limited availability of data prevents it from being used to verify the model or to confirm whether there is a problem in this area.

Capabilities on project:  
Environment

## 6 Summary and Conclusions

The Detailed Assessment of New Elvet, Church Street and Hallgarth can be summarised as follows:

- A detailed modelling assessment considered locations outside the existing AQMA where potential exceedences of the NO<sub>2</sub> annual mean objective were identified in the 2011 Air Quality Progress Report;
- The results of the model were used to identify the extent of exceedences of the annual mean objective for NO<sub>2</sub>;
- Annual mean concentrations were found to be predominantly below the objective, and no exceedences were predicted to occur at locations of relevant exposure;
- Elevated concentrations close to the objective were predicted at:
  - o the junction of Church Street and Hallgarth;
  - o the junction of New Elvet and Old Elvet; and
  - o the southern end of Church Street.

### 6.1 Recommendations

Whilst the model has predicted elevated concentrations of NO<sub>2</sub> at some locations, it is not considered, at this stage, likely that the annual mean objective for NO<sub>2</sub> will be exceeded at any locations of relevant exposure. It is therefore recommended that currently the existing AQMA should **not** be extended to the south to include the roads considered in this study.

The model predicted high concentrations of NO<sub>2</sub> at the junction of Church Street and Halgarth, although exceedences were not predicted at any locations of relevant exposure. Monitoring at two new sites near this junction will be continued for at least 6-months in order to confirm whether exceedences are extending over locations of relevant exposure and whether it is necessary to extend the AQMA.

Capabilities on project:  
Environment

## 7 References

Air Quality Framework Directive (96/62/EC).

COMEAP (1998). *The Quantification of the Effects of Air Pollution on Health in the United Kingdom*.

Council Directive 1999/30/EC relating to limit values for sulphur dioxide, nitrogen dioxide and oxides of nitrogen, particulate matter and lead in ambient air.

Council Directive 2008/50/EC on Ambient Air Quality and Cleaner Air for Europe.

Defra (2007) The Air Quality Strategy for England, Scotland, Wales and Northern Ireland

Defra (2009a). *Local Air Quality Management Technical Guidance LAQM.TG(09)*

Defra (2009b). *Local Air Quality Management Policy Guidance LAQM.PG(09)*

Defra (2010a) *The Air Quality Standards Regulations 2010 Statutory Instrument 2010 No. 64*

Defra (2010b) *Emission Factor Toolkit, Version 4.2*

Defra (2011a). <http://laqm1.defra.gov.uk/review/tools/background-maps-info.php?year=2008>

Defra (2011b). <http://laqm1.defra.gov.uk/review/tools/monitoring/calculator.php>

Defra (2011c) *Trends in NOx and NO2 emissions and ambient measurements in the UK* City of Durham Council (2008) Detailed Assessment

Durham County Council (2009) Updating and Screening Assessment

Durham County Council (2010) Progress Report

Defra (2011a) <http://laqm.defra.gov.uk/review-and-assessment/tools/background-maps.html> data downloaded January 2011

Defra (2011b). <http://laqm1.defra.gov.uk/review/tools/monitoring/calculator.php>

Directive 2002/3/EC relating to ozone in ambient air.

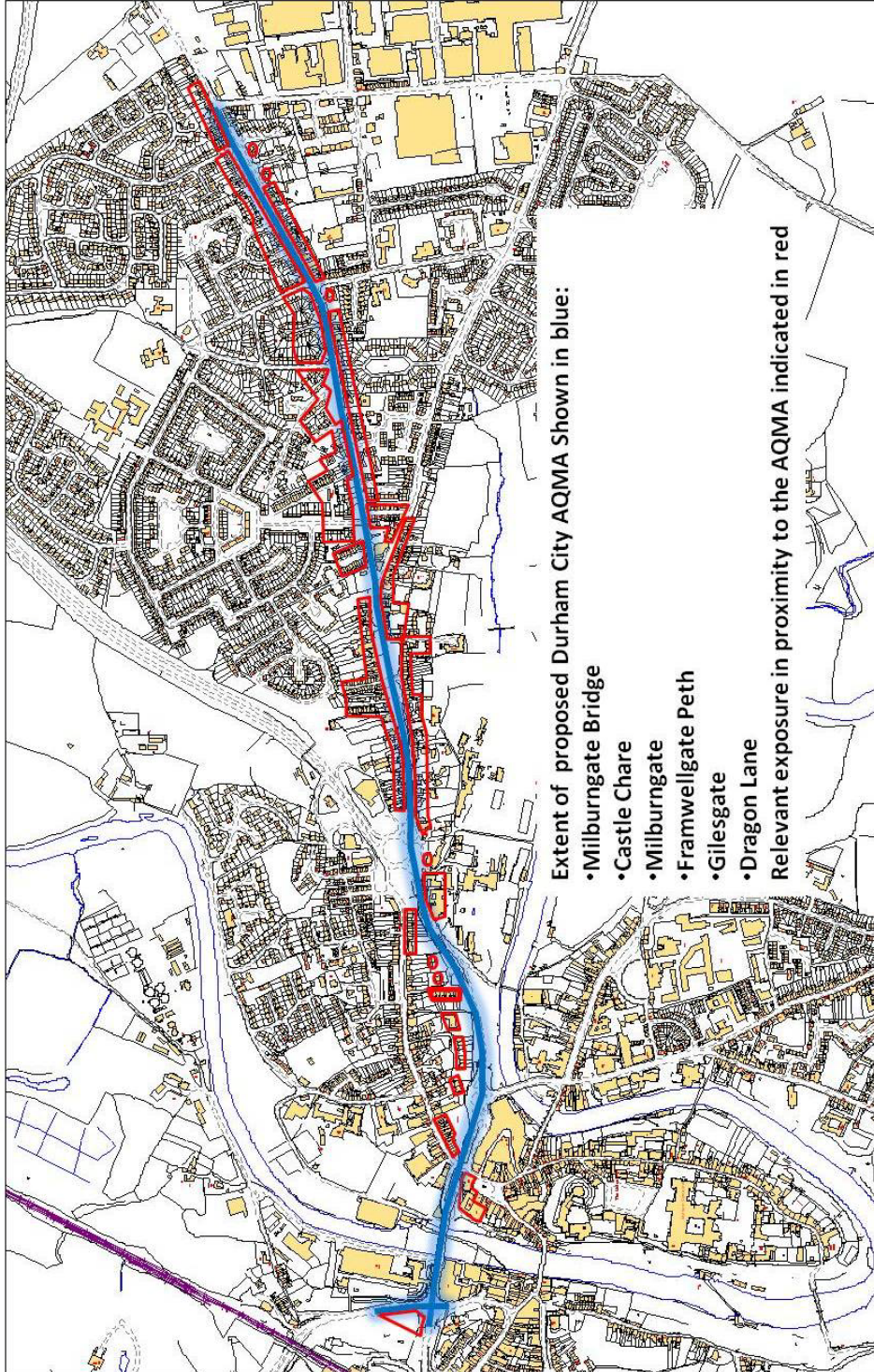
Directive 2008/50/EC of the European Parliament and of the Council of 21 May 2008 on ambient air quality and cleaner air for Europe.

Capabilities on project:  
Environment

# 8 Appendices

## Appendix A: AQMA Maps

Figure 4: Provisional Extent of AQMA Proposed in 2010 Progress Report



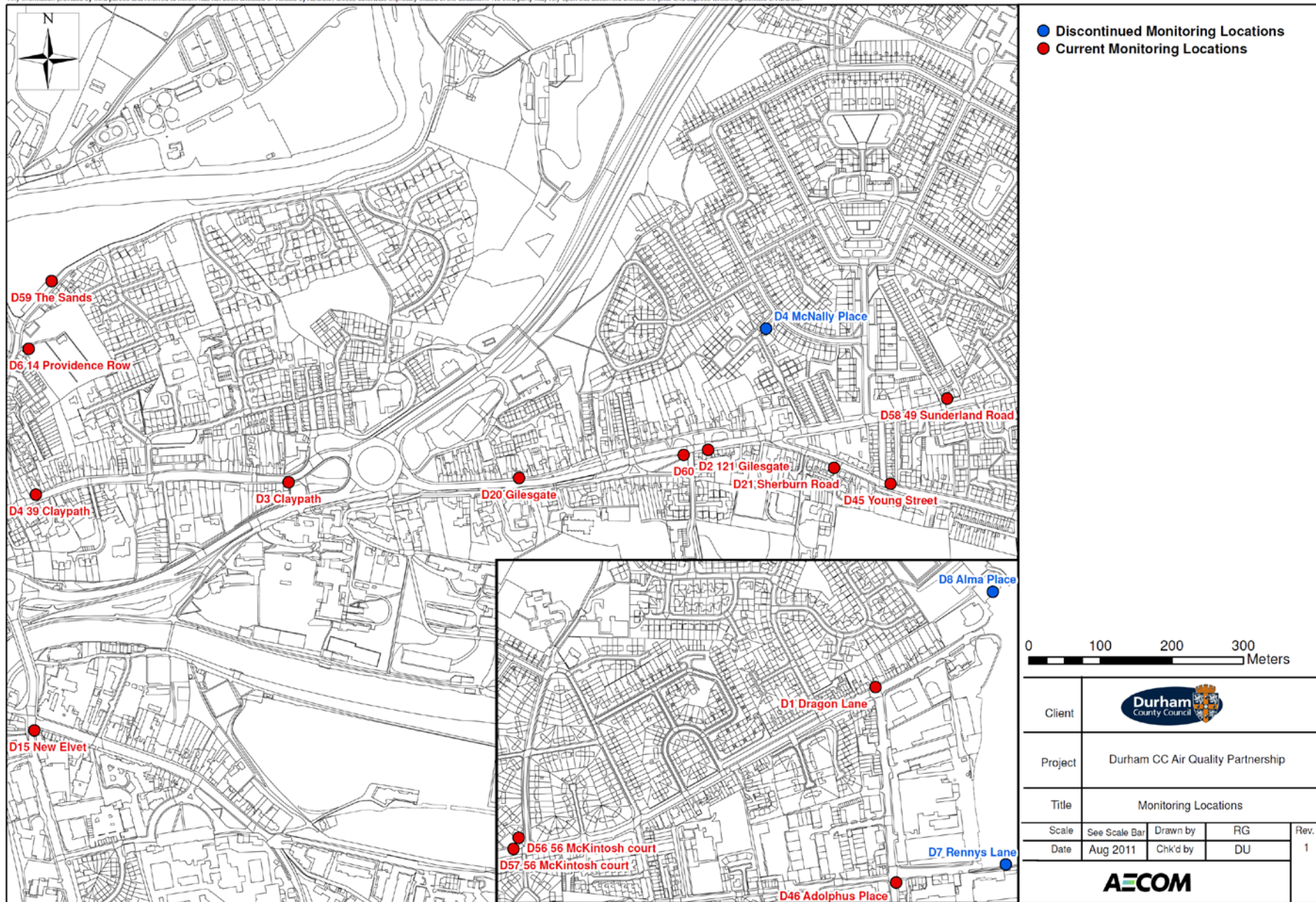
Reproduced from the Ordnance Survey Map with Permission of the Controller of Her Majesty's Stationary Office. Crown Copyright Reserved. License Number 100049055, 2010.

Capabilities on project:  
Environment

**Appendix B: Monitoring Sites**

Figure 5: Location of the Monitoring Sites in Durham City (East)

\*This document has been prepared by AECOM Ltd ("AECOM") for the sole use of our client and in accordance with generally accepted consultancy principles, the budget for fees and the terms of reference agreed between AECOM and the Client. Any information provided by third parties and referred to herein has not been checked or verified by AECOM, unless otherwise expressly stated in the document. No third party may rely upon this document without the prior and express written agreement of AECOM.\*

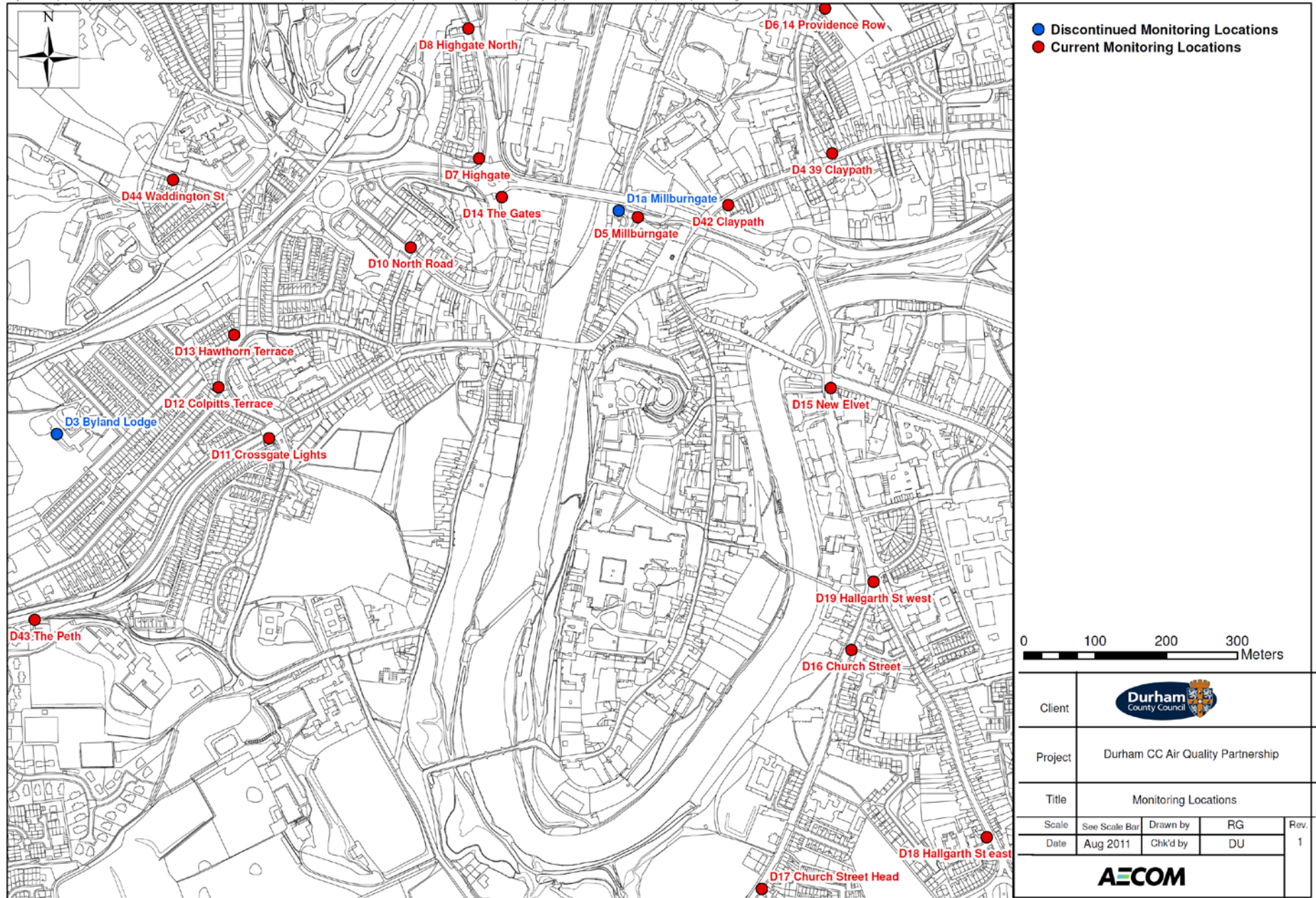


BASED ON ORDNANCE SURVEY MAPPING WITH PERMISSION OF THE CONTROLLER OF HER MAJESTY STATIONARY OFFICE © CROWN COPYRIGHT. UNAUTHORISED REPRODUCTION INFRINGES CROWN COPYRIGHT AND MAY LEAD TO CIVIL PROCEEDINGS. LICENCE NO. 100023401

Capabilities on project:  
Environment

Figure 6: Location of Monitoring Sites in Durham City (West)

\*This document has been prepared by AECOM Ltd ("AECOM") for the sole use of our client and in accordance with generally accepted consultancy principles, the budget for fees and the terms of reference agreed between AECOM and the Client. Any information provided by third parties and referred to herein has not been checked or verified by AECOM, unless otherwise expressly stated in the document. No third party may rely upon this document without the prior and express written agreement of AECOM.\*



BASED ON ORDNANCE SURVEY MAPPING WITH PERMISSION OF THE CONTROLLER OF HER MAJESTY STATIONARY OFFICE © CROWN COPYRIGHT. UNAUTHORISED REPRODUCTION INFRINGES CROWN COPYRIGHT AND MAY LEAD TO CIVIL PROCEEDINGS. LICENCE NO. 100029401

Capabilities on project:  
Environment

### Appendix C: AAQuIRE Software

The AAQuIRE 6.2 software is a system that predicts Ambient Air Quality in Regional Environments and comprises a regional air quality model and statistical package.

AAQuIRE was developed by Faber Maunsell Ltd (now AECOM) to meet three requirements in predictive air quality studies. The first requirement was an immediate need for a system that produced results that could be interpreted easily by non-air quality specialists to allow for proper informed inclusion of air quality issues in wider fora, the main example being to allow consideration of air quality issues in planning processes. This was achieved by allowing results to be generated over a sufficiently large study area, and at an appropriate resolution, for the issue being considered. The results are also presented in a relevant format, which is normally a statistic directly comparable with an air quality criterion or set of measured data being considered. AAQuIRE can also produce results directly comparable with all ambient air quality standards.

The second requirement was for a system to be based, initially, on existing and well-accepted and validated dispersion models. This has two advantages. The primary one is that it avoids the need to prove a new model against the accepted models and therefore enhances acceptability. The second advantage is that when appropriate new models are developed they can be included in AAQuIRE and be compared directly with the existing models, and sets of measured data, using the most appropriate statistics.

The final primary requirement for AAQuIRE was a consideration of quality assurance and control. An important aspect of modelling is proper record keeping ensuring repeatability of results. This is achieved within AAQuIRE by a set of log files, which record all aspects of a study and allow model runs to be easily repeated.

The ways in which AAQuIRE and the models currently available within it operate are discussed below.

The operation of AAQuIRE can be divided into five main stages. These are:

- the preparation of the input data;
- the generation of model input files;
- dispersion modelling;
- the statistical treatment of dispersion modelling results; and
- the presentation of results.

The first step in operating AAQuIRE is to prepare the input data. The following data are needed for the year and pollutant to be modelled:

- meteorological data expressed as occurrence frequencies for specified combinations of wind speed, direction, stability and boundary layer height;
- road system layout and associated traffic data within and immediately surrounding the study area;
- industrial stack locations and parameters; and
- a grid of model prediction locations (receptors).

The modelling is always carried out to give annual average results from which appropriate shorter period concentrations can be derived.

The second stage is the generation of the model input files required for the study. All the data collated in the first stage can be easily input into AAQuIRE, using the worksheets, drop down boxes and click boxes in the Data Manager section of the software. Data from spreadsheets can be easily pasted into worksheets, so that any complicated procedures required for data manipulation can be achieved before entry into AAQuIRE. Several diurnal and seasonal profiles can be defined for each separate source. The relevant meteorological data can also be specified at this stage.

The third stage is executing the models. The study area will usually be divided up into manageable grids and run separately using the Run Manager in AAQuIRE. The results from the separate files can be combined at a later stage. Pollutant concentrations are determined for each receptor point and each meteorological category and are subsequently combined.

The fourth stage is the statistical processing of the raw dispersion results to produce results in the relevant averaging period. Traffic sources and industrial sources can be combined at this stage provided the same receptor grid has been used for both. Background concentrations should also be incorporated at this stage.

The final stage is presentation of results. Currently the result files from the statistical interpretation are formatted to be used directly by the Surfer package produced by Golden Software Inc. Alternative formats are available to permit interfacing with other software packages. On previous projects the results have been imported into a GIS (e.g. ArcView and Map Info).

Capabilities on project:  
Environment

**Appendix D: Model Verification**

The model initially under-estimated concentrations when compared to the monitoring undertaken in 2010. Due to this discrepancy, the modelled results were adjusted in accordance with the procedure detailed in technical guidance LAQM.TG(09).

An adjustment factor for each of the two areas was calculated as follows:

$$NO_x \text{ [monitored, traffic contribution]} = NO_x \text{ [monitored]} - NO_x \text{ [background]}$$

$$NO_x \text{ [modelled, traffic contribution]} = NO_x \text{ [modelled]} - NO_x \text{ [background]}$$

$$\text{Adjustment Factor} = NO_x \text{ [monitored, traffic contribution]} / NO_x \text{ [modelled, traffic contribution]}$$

The adjustment factor derived was 1.58.

The adjustment factor was subsequently applied to the modelled NO<sub>x</sub> concentrations, and background NO<sub>x</sub> added to give the adjusted NO<sub>x</sub> concentrations (NO<sub>x</sub> [model adjusted])

$$NO_x \text{ [model adjusted, traffic contribution]} = NO_x \text{ [modelled, traffic contribution]} \times \text{Adjustment Factor}$$

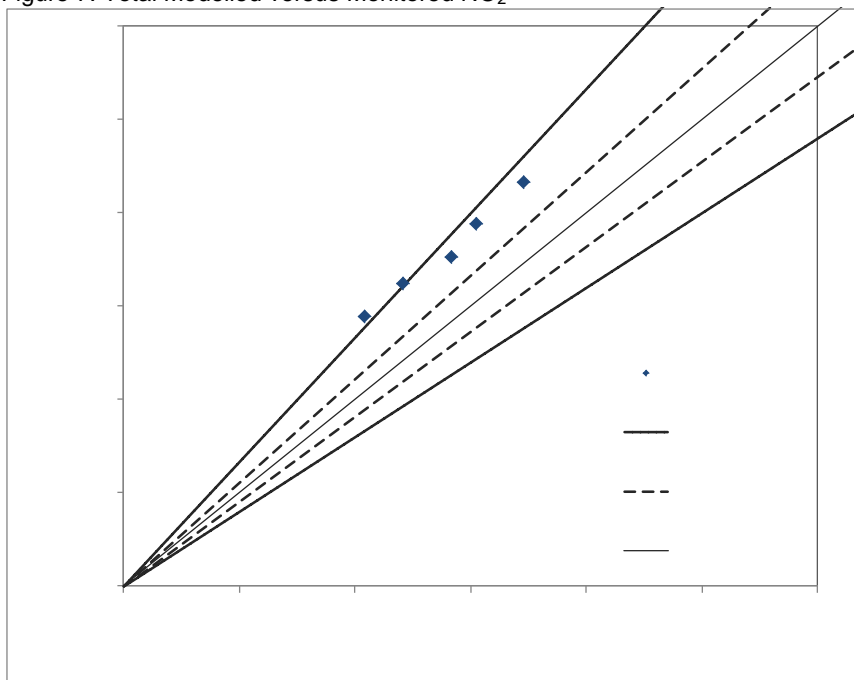
$$NO_x \text{ [model adjusted]} = NO_x \text{ [model adjusted, traffic contribution]} + NO_x \text{ [background]}$$

The adjusted NO<sub>x</sub> concentrations were then converted to NO<sub>2</sub> using version 2.1 of the 'NO<sub>2</sub> to NO<sub>x</sub>' calculator provided by the Air Quality Archive and in accordance with the technical guidance, LAQM.TG(09).

Table 8: Comparison of Modelled and Monitored NO<sub>2</sub> Concentrations

Site Name	Monitor Type	Site Type	Modelled Height	Monitored Total NO <sub>2</sub>	Modelled Total NO <sub>2</sub>	% Difference [(mod-mon)/mon]
New Elvet	Diffusion Tube	Roadside	1.5	38.8	30.5	-21%
Church Street	Diffusion Tube	Roadside	1.5	32.4	24.2	-25%
Church Street Head	Diffusion Tube	Roadside	1.5	35.3	28.4	-20%
Hallgarth St east	Diffusion Tube	Roadside	1.5	28.9	20.9	-28%
Hallgarth St west	Diffusion Tube	Roadside	1.5	43.2	34.6	-20%

Figure 7: Total Modelled versus Monitored NO<sub>2</sub>





Capabilities on project:  
Environment

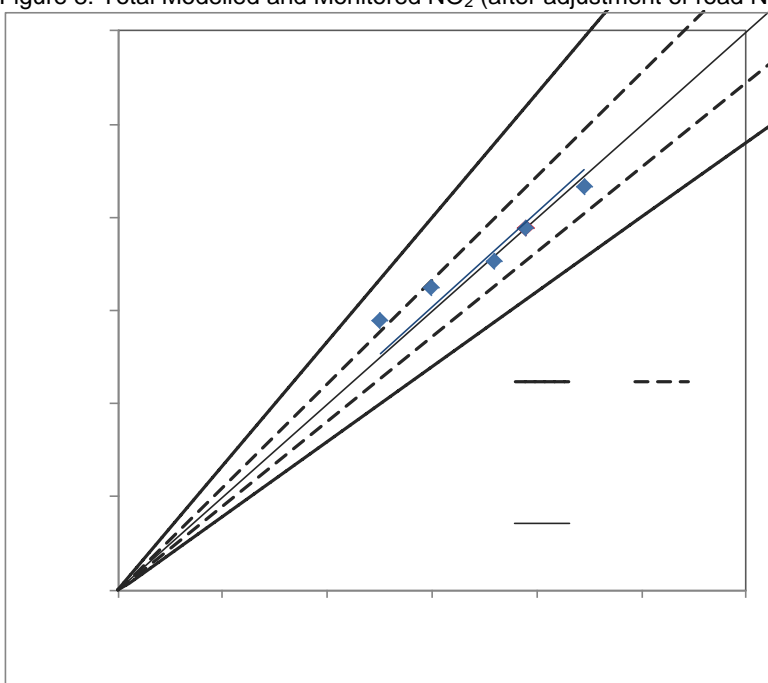
Table 9: Determination of Modelled and Monitored Rd NO<sub>2</sub> and Modelled Rd NO<sub>x</sub>

Site Name	Monitored Total NO <sub>2</sub>	Monitored Road NO <sub>x</sub>	Adj Bknd NO <sub>2</sub>	Monitored Road Contribution NO <sub>2</sub> (tot-bgd)	Monitored Road Contribution NO <sub>x</sub> (tot-bgd)	Modelled Road Contribution NO <sub>x</sub> (excl bgd)
New Elvet	38.80	59.10	13.00	25.80	59.10	37.80
Church Street	32.43	42.48	13.00	19.43	42.48	23.14
Church Street Head	35.25	49.64	13.00	22.25	49.64	32.68
Hallgarth St east	28.91	33.96	13.00	15.92	33.96	15.94
Hallgarth St west	43.23	71.70	13.00	30.23	71.70	48.00

Table 10: Determination of the Adjustment Factor and Total Adjusted NO<sub>2</sub>

Site ID	Adjustment Factor for Modelled Road Contribution	Adjusted Modelled Road Contribution NO <sub>x</sub>	Adjusted Modelled Total NO <sub>x</sub>	Adjusted Modelled Total NO <sub>2</sub>	Monitored Total NO <sub>2</sub>	% Difference [(mod-mon)/mon]
New Elvet	1.5780	59.6		39.0	38.8	1%
Church Street		36.5		30.0	32.4	-8%
Church Street Head		51.6		36.0	35.3	2%
Hallgarth St east		25.2		25.1	28.9	-13%
Hallgarth St west		75.8		44.6	43.2	3%

Figure 8: Total Modelled and Monitored NO<sub>2</sub> (after adjustment of road NO<sub>x</sub>)



**Statistical Analysis**

The data in Table 11 indicate the statistical confidence attributed to the model for the two areas.

The data show that the verification significantly improves the accuracy of the model, with a resultant RMSE of +/- 2.3 µg/m<sup>3</sup>, with similarly good correlation coefficient and fractional bias. The correlation coefficient and fractional bias are reasonably good, which indicates that the model is reasonably representative.

This range is shown in the plots (Appendix F) to define the extent of the proposed AQMA.

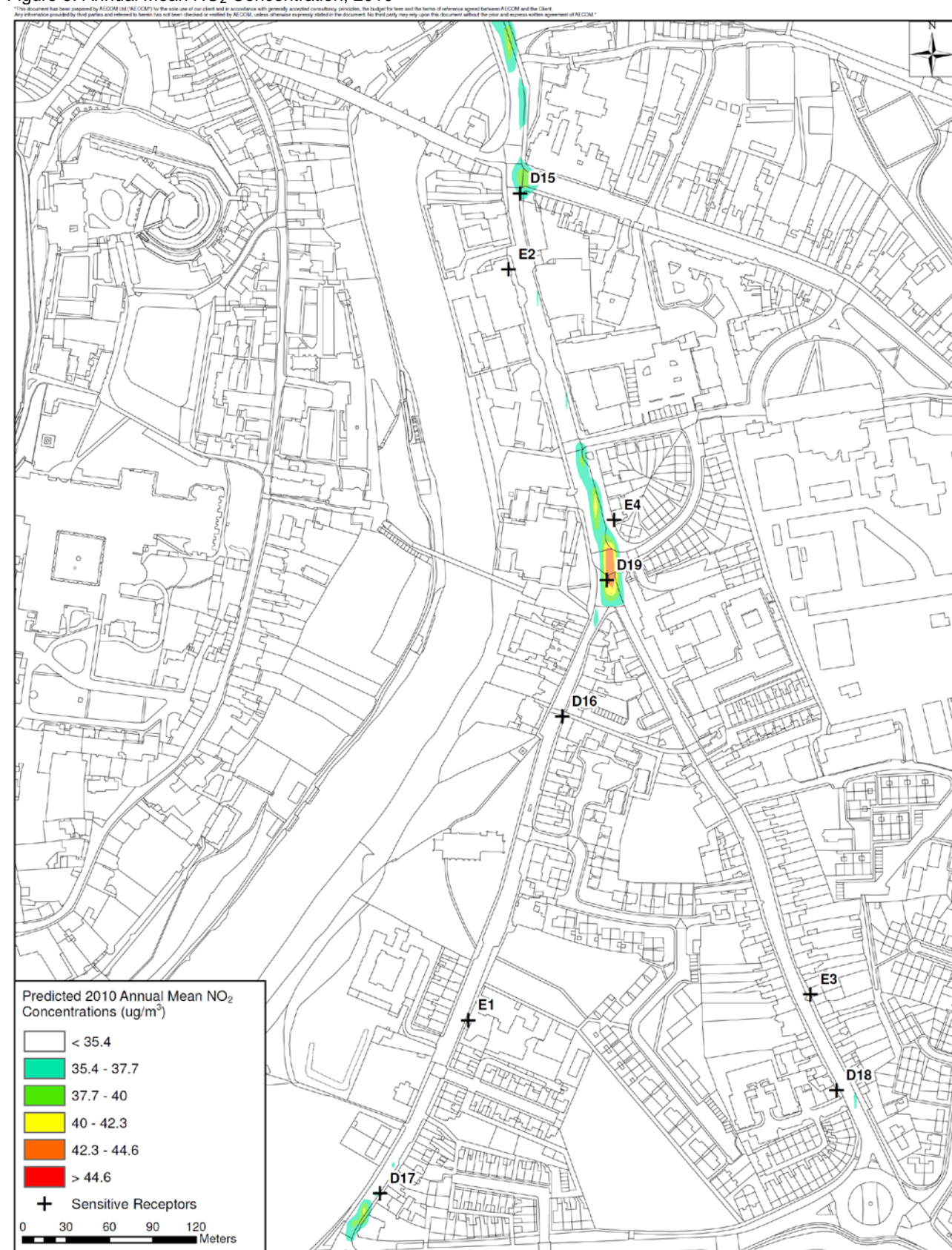
Table 11: Statistical Analysis of Model

	Ideal Value	Unverified	Verified
Correlation coefficient	1	0.99	0.99
RMSE	0	7.89	2.30
fractional bias	0	0.26	0.04

Capabilities on project:  
Environment

**Appendix E: Model Outputs**

**Figure 9: Annual Mean NO<sub>2</sub> Concentration, 2010**



**New Elvet, Hallgarth and Church Street  
Detailed Assessment**

Title	<b>Predicted 2010 Annual Mean NO<sub>2</sub> Concentrations</b>			
Scale	See Scale bar	Drawn By	RG	Rev. 1
Date	Aug 2011	Chk'd By	DU	

BASED ON ORDNANCE SURVEY MAPS WITH PERMISSION OF THE CONTROLLER OF HER MAJESTY'S STATIONERY OFFICE. © CROWN COPYRIGHT. UNAUTHORISED REPRODUCTION IN WHOLE OR IN PART IS PROHIBITED AND MAY LEAD TO CIVIL PROCEEDINGS.