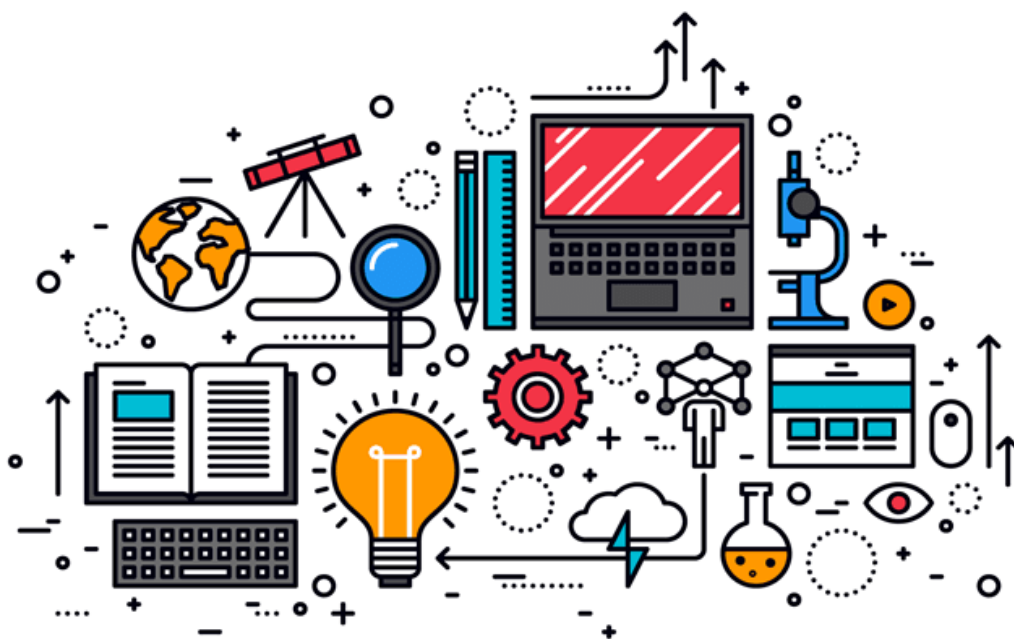


Pupil Place Planning in Durham Schools and Academies 2024



Contents

Section 1	Introduction
Section 2	The National Picture (England) July 2023
Section 3	The Position in County Durham <ul style="list-style-type: none">• Promoting Choice and Diversity
Section 4	Forecasting Primary and Secondary Pupil Numbers
Section 5	Strategy for School Organisation <ul style="list-style-type: none">• Providing Additional School Places• School Leadership
Section 6	Post-16, SEN and Early Years Education <ul style="list-style-type: none">• Post-16 Pupil Place Planning• SEN Provision• Early Years Provision
Annex 1	Planning Area Details
Annex 2	Primary Schools - Projected Rolls
Annex 3	Secondary Schools - Projected Rolls
Annex 4	Special School Provision
Annex 5	Early Years Providers

SECTION 1

Introduction

All children and young people should benefit from an education that helps them succeed in life and allows them to make the most of their skills and employment opportunities. We want pupils and young people to live healthy, active and fulfilling lives, and for our nurseries, schools and colleges to provide them with the skills to make good choices about their life and wellbeing. Furthermore, it is our aim that all children and young people should feel safe and confident in their education.

Durham County Council (the local authority) has a statutory duty to ensure that there are sufficient school places in the right locations to meet demand. We are responsible for promoting a good supply of strong schools through planning, organising and commissioning places in a way that raises attainment, increases diversity, encourages collaboration between schools and promotes community cohesion. We seek to achieve this in partnership with key stakeholders including headteachers, governors, academy trusts, parents and carers, Dioceses and local communities.

The need for school places fluctuates in response to population changes, new housing developments and government policy and can lead to rising as well as decreasing pupil numbers. Increases in demand can lead to the establishment of new schools or the expansion of existing schools. Decreases in demand can lead to a reduction in places through changes to admission arrangements or the rationalisation of provision. This document sets out the council's approach to Pupil Place Planning and outlines our approach to the organisation of schools to maintain and improve education provision across the county. It also provides an overview of current and future pupil numbers which supports planning the future pattern and provision of school places across the County.

The purpose of the Pupil Place Planning document is to understand the projected demand for school places in the future. Any reviews of education provision we undertake and any recommendations for school re-organisation (for example opening, closing, federating, amalgamating, enlarging or contracting of schools) will, in part, be based on information contained in this document.

Pupil Place Planning (PPP) is a critical aspect of the Local Authority's statutory duty to assess the local need for school places to ensure that every child can be provided with a place in a state-funded school in County Durham. This document seeks to provide a comprehensive account of trends in pupil numbers and likely upcoming pressures, drawing on a variety of data sources which are referred to in Section 4. Information on current and projected school rolls, school capacity, birth rates and planned housing developments is

provided throughout the document. However, future pupil numbers, particularly in individual areas of the county and in individual schools, may be affected by unanticipated changes to planned local housing targets, changing migration patterns and swings in parental preference and are not always possible to predict with total accuracy.

An updated PPP document is made available to schools and key stakeholders each year. Schools are encouraged to play an active role in the pupil place planning process and to identify at an early stage any concerns with projections that may impact on future school planning.

In mainstream school forecasting, the county is split into 'planning areas' for both primary and secondary sectors. This allows for a more detailed analysis of need and helps to make decisions about the allocation of funding to provide additional places to meet demand. Planning areas do not have geographical boundaries but are groups of schools that reflect the local geography, reasonable travel distances and existing pupil movement patterns. Primary planning areas are listed in Annex 1 (pages 17-19). Tables of primary school projected rolls are detailed in Annex 2 (pages 20-37) and are presented using the planning area groupings highlighted in Annex 1. Secondary schools are also grouped into specific local school place planning areas. Tables of secondary school projected rolls are highlighted in Annex 3 (pages 38-42).

SECTION 2

The National Picture (England) 2024

Nationally the pattern of demand for pupil places in England is changing. In July 2024, the Department for Education (DfE) released its most recent set of national pupil projections. The key points are:

- The population attending primary and nursery schools peaked in 2019 and the figures have been dropping since then. This is primarily due to the continued reductions in the birth numbers since 2013, although the larger drop in 2021 may have been connected to the pandemic (for example, parents choosing to home school for reception year).

- The overall population in these school types is projected to be 4,181,938 in 2028. This is 412,000 lower than the actual figure in 2023 (4,593,000). The figure for 2028 is 116,000 higher than was forecast in the model published in 2022, a difference of 2.9%. The nursery & primary population is therefore still projected to drop, but at a slower rate.
 - The secondary school population is projected to be 3,191,441 in 2028. This is 2,000 lower than the total in 2023 (3,193,000). The figure for 2028 is 28,000 higher than was forecast in the model published in 2022, a difference of 0.9%.
 - The pattern of change in the secondary school population (peaking in 2024-2025 then slowly starting to drop) is unchanged.

- The population in special schools has been increasing and is also projected to peak around 2025 before starting to slowly drop. This is primarily driven by the decrease in the overall population from the same point.

In the last decade national policy has been principally focussed on addressing a shortage of primary places as a result of increasing birth rates. The government has aimed to address such shortages primarily through supporting the opening of Free Schools, expansions of Academy Trusts and supporting local authority plans for the expansion of successful and popular primary schools. This focus is now shifting to the secondary schools as these increased numbers of primary pupils are moving into the secondary sector.

SECTION 3

The Position in County Durham

County Durham has had the fourth largest population increase out of the 12 north east authorities since 2001. Between 2001 and 2020 the population increased by 39,500 to 533,100 which is an increase of 8%. In the north east the average increase was 5%. These latest figures also show that County Durham's population has continued to grow each year since 2003.

Unlike the national trend the county has seen a gradual fall in the number of its children and young people since 2001. The 2020 figure was 4.2% lower than in 2001 compared to an 8.5% increase nationally. This represents a fall of 4,500 children and young people in the county over this period. The fall in the 10-14 year old age group is due to low birth rates between 2000-2003 although increases in births between 2004 and 2012 did increase the number of children aged under 10. However, this trend has now reversed as birth rates have fallen since 2021 and are now as low as those at the time of the 2001 Census.

The expected intake to reception is expected to fall from 4,975 in 2022/23 to 4,641 by 2026/27, followed by a relatively sharp increase in 2027/28 to 4,923. Thereafter they are expected to increase by approximately 30 each year up to 2031. Overall primary school pupil numbers are projected to reduce by approximately 2,400 between 2022/23 and 2029/30 before starting to increase slightly thereafter.

Secondary school pupil numbers (age 11-16) are projected to increase each year from 2022/23 – 2025/26 so that by 2025/26 there are approximately 1,400 more secondary pupils aged 11-16 than there are in 2022/23. Thereafter they are expected to reduce slightly year on year so that by 2030/31 they are at the same level as in 2022/23.

At 1 September 2024, the capacity of the 210 primary/infant/junior schools was 46,342 and 37,228 children were on roll. This means there was an overall surplus of 9,114 places (19.7%). The 11-16 capacity of the secondary schools was 30,699 and there were 27,242 pupils on roll. This gives an overall surplus of 3,457 (11.26%).

Promoting Choice and Diversity

The 2006 Education and Inspections Act requires Local Authorities to exercise their functions with a view to securing diversity in the provision of schools and increasing opportunities for parental choice.

Promoting and achieving choice and diversity in our school system is a way of creating a climate which fosters high and improving standards of achievement. There is diverse provision in Durham including Federations and Foundation

(Trust) Schools, Academies, as well as Voluntary Aided/Controlled Roman Catholic and Church of England Schools and Community Schools and a University Technical College. The pattern of school provision as at 1 September 2024 is below.

School Type	Community	Voluntary Controlled	Voluntary Aided	Foundation Trust	Academy	14-19 School	Total
Nursery	10	-	-	-	-	-	10
Infant	6	-	-	-	2	-	8
Junior	3	-	2	-	3	-	8
Primary	88	10	6	-	90	-	194
Secondary (11-16)	1	-	-	-	17	-	18
Secondary (11-18)	1	-	-	-	10	-	11
The University Technical College, South Durham (14-19)	-	-	-	-	-	1	1
Sixth Form Centre (16-19)	1	-	-	-	-	-	1
Special	8	-	-	-	1	-	9
Total	117	10	8	-	124	1	260

SECTION 4

Forecasting Primary and Secondary Pupil Numbers

Pupil projections are used for a number of purposes. These include:

- Pupil place planning.
- To help complete the annual Department for Education (DFE) school capacity return.
- To help calculate Section 106 contributions from new housing developments for additional school places.
- To assist with determining future published admission numbers (PANS) and school re-organisation proposals.
- To plan and review the pattern and provision of schools across the LA area which helps inform the Education Review.

Pupil projections in County Durham are based on relevant data produced from a range of services:

- Health authorities (live births).
- October School Census.
- Primary school patterns of transition to secondary schools.
- Neighbouring Authorities (transfer of information regarding pupil movement across borders and school re-organisation proposals).
- Additional pupils arising from housing developments that have received planning permission.
- Early Years settings - nursery/childcare figures (private/voluntary/LA provision).
- Staying on rate at post-16.

Pupil rolls in primary schools are projected by using data provided by the Health Authority on the number of children born in County Durham. The data includes a postcode sector and the academic year a child was born. Future years' births are assumed to be an average of the previous 5 years.

Forecasting secondary school pupils is carried out at the same time as forecasting primary numbers. Primary numbers feed through to the secondary

phase, so current projections have the advantage that seven year groups are already in the school system.

The basic technique for forecasting secondary pupil numbers is to project forward the numbers of children transferring to secondary schools from specific primary schools each year. These figures are then adjusted to include a range of other important factors.

The key factors are:

- **Expected House Building**

Accurately predicting the number of pupils likely to be produced from housing developments is not straightforward as it depends upon the location, type of housing etc. In August 2023 DfE produced information on pupil yields using national data. This detailed research indicates that the expected pupil yield from developments is as follows:

- 0.26 primary aged pupils per house (i.e. just under 3 houses could typically generate one primary aged pupil);
- 0.13 secondary aged pupils per house (i.e. just under 10 houses could typically generate one secondary aged pupil);
- 0.07 early years/nursery aged pupils per house (i.e. 100 houses could typically generate 7 early years/nursery aged pupils);
- 0.02 post 16 aged pupils per house (i.e. 100 houses could typically generate 2 post 16 aged pupils);
- 0.01 SEND pupils per house (i.e. 100 houses could typically generate 1 SEND pupil).

The impact of new house building is often discussed during consultation on any proposed re-organisation of schools. House building does not necessarily mean additional pupils overall - people buying new houses may be moving from other areas within the Authority with knock-on effects on other schools. There are many instances where families move house, but the children do not change the school they attend. The effects of regeneration schemes or housing market renewal schemes are very difficult to predict.

Housing developers regularly submit applications for schemes across the county. The impact of additional housing on the availability of school places is carefully considered and where additional teaching accommodation is required, the developer will be requested to make a financial contribution to the cost.

- **Migration Trends**

Migration trends take account of the additional numbers of children expected to move in or out of a particular area or neighbouring authority

and the arrival of new migrants from abroad. According to the latest data, less than 2% of our primary school pupils are resident in other authorities and about 2.5% of our resident population go to schools outside of the authority for their education. Taking account of all nationalities of children in the LA area, English is the first language of approximately 96.3% of primary children.

In respect of secondary schools, about 2.9% of pupils travel in from other authorities, but around 4.9% go to schools outside of the Authority for their education. English is the first language for approximately 96.8% of secondary children.

Changes in School Organisation

Recent or planned changes in the number, size, age range and location of schools has an impact on pupil place planning. Pupil place planning takes account of proposed changes to the current pattern and provision at primary age, 11-16, post 16 and provision in special schools.

▪ Schools' Popularity

Parental preference and admissions into schools is monitored and reviewed each year to identify any significant changes that could impact on projecting pupil numbers for both primary and secondary schools.

▪ Surplus Places

Schools tend to operate most efficiently when full or nearly full. However, it is generally accepted that not all unfilled places in a school are surplus places, but that a small margin of surplus capacity is often allowed to facilitate parental preference, to take account of the fact that schools with available places may not always be in the part of a planning area where the demand is, and to allow for a degree of error in the forecasts. A school is generally considered to be full when it has less than 5% of its places unfilled. This is in line with the National Audit Office report on Capital Funding for new school places published in 2013, where it states: "It is considered that on average 5 per cent was the bare minimum needed for authorities to meet their statutory duty with operational flexibility, while enabling parents to have some choice of schools". Therefore, local authorities cannot and should not try to eliminate all surplus capacity. A certain level of surplus places is necessary because:

- it allows greater opportunity to respond to parental choice;
- there may be unpredicted changes to demographic patterns, with a sudden influx of children to particular areas;
- there may be unexpected changes to house building patterns.

There is no single 'ideal' level of overall surplus capacity since this varies from authority to authority. It is reasonable to aim for between 5% - 10% overall surplus across the authority. Patterns show that a reasonable figure for urban areas is around 5% whereas in more rural areas it is around 10%. As Durham has a number of rural areas the aim is to work to a target of no more than 10% surplus places overall. It is recognised that in some rural areas in County Durham it may be difficult to achieve this target. However, where an individual school has 25% or more surplus places, the Local Authority may take action to reduce this if it is appropriate to do so with the aim of improving that school's educational and financial sustainability.

Removing surplus places is not an end in itself. It must be part of the wider strategy to improve outcomes for children and young people through transforming learning and so raising education achievement.

SECTION 5

Strategy for School Organisation

This strategy sets out an approach to school organisation to ensure there are sufficient places to meet demand and to support school leadership teams and Governing Bodies to provide the highest possible quality of education to children in County Durham. As highlighted in Section 1, the county has been 'broken down' into specific school place planning areas for both primary and secondary schools to assist with pupil place planning and school organisation. The council looks at these local school place planning areas as well as the whole county to ensure that schools are appropriate to deliver an effective education to their local communities.

There are many factors that should be considered carefully before any proposals for re-organisation of schools in an area can be brought forward with a clear rationale that demonstrates how the outcome of any changes would lead to enhanced education provision for children in the relevant local school place planning area.

The main emphasis on school provision should be focussed on the standard of education, but the overall strategy needs to take into account the wider provision in an area and financial sustainability is also a key factor. Significant factors that need to be carefully considered in any review of individual schools and groups of schools within each pupil place planning area would include:

- (a) education Standards;
- (b) Ofsted judgements;
- (c) current and projected pupil numbers;
- (d) geographical location, including remoteness of a school from other schools;
- (f) evidence of financial difficulties being experienced by a school, including capacity to appoint a Head teacher;
- (e) strength of Governance and Leadership at schools;
- (g) transport arrangements and implications on cost of any changes;
- (h) the school's projected budget position over a five year period (including the impact of the proposed School National Funding Formula);
- (i) expected house building in a local area that will require the need for additional school places;
- (j) condition of school buildings;
- (k) community involvement.

With the educational landscape changing rapidly, particularly with the increase in the number of Academies and Free schools, uncertainty about school funding, opening of 'all through' schools, school 'campus' arrangements etc. there is a range of different options for education provision that could be considered now, that may not have been considered in the past.

There is a clear need to consider potential for different patterns of educational provision in some local school place planning areas in County Durham to address some/all of the factors highlighted (a-k above). It is essential that schools and all relevant partners and key stakeholders are involved from the early stages in any review of educational provision. In most instances there may be a range of options that need to be considered and therefore it is essential that schools are fully involved in discussing long term plans for their own schools as early as possible.

Providing Additional School Places

Additional school places can be provided by either adapting current accommodation to create additional teaching space or by building additional classrooms subject to the availability of capital funding. In some instances of significant growth in a local area there may be the need to provide a new build additional school.

Local Authorities receive Basic Need grant funding from the Government to provide additional school places. Funding for County Durham is grossly insufficient to provide all of the additional places required and other sources of funding are therefore required to enable the Council to fulfil its statutory duty of ensuring there are sufficient school places available.

Where there is a need for additional school places as a result of new housing developments, one potential source of funding is a financial contribution from housing developers via a Section 106 agreement. There is an approved methodology for seeking contributions from housing developers for additional teaching accommodation. Sometimes, capital receipts from the sale of school land can be used, however this is subject to DfE approval about the disposal of school buildings and playing fields.

School leadership

School leadership teams and Governing Bodies face increasing pressures to maintain the efficient organisation and effective leadership of their schools, particularly of rural primary schools, with regard to:

- recruiting headteachers
- developing alternative models of school leadership
- creating effective partnerships between schools.

Within this challenging context, building leadership capacity and succession planning is an issue that must be part of any Governing Body's strategic planning. The local authority works with Governing Bodies to develop strategies to build capacity and to plan well in advance for strong, sustainable future leadership of a school. It is vital that this is approached and managed in a forward thinking and proactive manner and not in response to the

resignation or retirement of a headteacher. The local authority supports Governing Bodies to take a strategic approach to the challenge of developing a model of leadership that will suit their school in the future. This includes exploration of the suitability of executive headteacher arrangements as part of a collaboration, federation or Multi Academy Trust (MAT).

SECTION 6

Post-16, SEN and Early Years Education

Post-16 Pupil Place Planning

Post-16 learner numbers can be difficult to predict as they are influenced by a number of key factors including:

- Fluctuations in the size year 11 cohorts leaving school. For example, the projected Year 11 cohort for the 2024-25 academic year is 5,052. This is a slight decrease on the previous year's Year 11 cohort size of 5,060. However, it is projected that the number of Year 11 students will increase to 5,568 by the 2028-29 academic year.
- Quality of CEIAG programmes and activities within secondary schools
- Export of County Durham learners to provision in other LA areas alongside import of out of county learners in to County Durham learning provision
- Longer term impacts from COVID-19 pandemic on numbers and proportions of post 16 students continuing in further education or training compared to entering the labour market.

As a result of Raising of the Participation Age (RPA), young people are required to remain in learning until their 18th birthday. Young people are able to choose how they participate post-16, which could be through: full time education at a school sixth form, a sixth form college, or a college of further education; an apprenticeship or job with accredited training; or part time education or training if they are employed, self-employed or volunteering for 20 hours or more a week. The participation rate of 16 year olds resident in County Durham is 93.4% and is based on the 2023/24 December-February average (which is the period within the academic year that the Department for Education uses for annual comparisons e.g. NEET scorecard).

There are a range of learning providers in County Durham. Information on learning providers including school sixth forms/sixth forms college, further education colleges and independent training providers can be found on the Families Information Service website.

<http://www.countydurhamfamilies.info/kb5/durham/fsd/home.page>

Important Note:

Participation data included in the above report relates to young people who are resident in County Durham and recorded on the Local Authority's Client Caseload Information System (CCIS).

Population projections are based on data sourced from the school census information and Year 11 predictions.

SEN Provision

When planning places for Children and Young People who require Specialist provision we work with all Special and Enhanced Mainstream Provision Schools to plan placements annually. Forecasts are made through assessing the SEND cohort prior to transition, in year transfers are planned through individual responses to each child. Durham County Council commissioned 1,622 Special School in September 2023. It is known that each of these places were taken by identified pupils. Recognising that there is an annual increase in the volume of specialist provision we are currently undertaking a review of High Needs provision. This review will include research into the number of pupils with Education Health and Care Plans and the level of need identified within them to enable an accurate assessment of those pupils who will require places in Special Schools at Key Stage,1,Key Stage 2 and Year 7.

- There are 5,200 active EHCPs (Sept 24) this is a 23% increase from 4,224 EHCPs recorded in Jan 2023 SEND2 report
- 2023 saw an increase in EHCP needs assessment requests of 153% (1,042) compared to the 411 requests received 5 years ago. This compares to a 78% increase regionally and a 91% increase nationally
- In 2023 Durham issued 541 EHCPs an increase of 124% compared to five years ago, again greater than regional (+67%) and Eng (+73%)
- 41% of all young people with an EHCP in Durham are Educated in a Special School compared to 32% in Eng.
- Durham also has 32% of young people with an EHCP in a mainstream school compared to 43% in the rest of the country.
- Durham has increased Maintained Special School places by 12% since 2019.
- The increase in Special School places is lower than the demand which is placing pressure on Specialist Provision.
- We continue to look at ways we can safely expand our Special School places to meet the demand.

Early Years Provision

Early Years education in County Durham is delivered by a variety of providers - Local Authority Nursery Schools, Nursery Units attached to Primary Schools and Private and Voluntary Providers (Including childminders).

Annex 5 (pages 44-50) provides details of nursery schools and Private and Voluntary Providers and the age range covered by each provision.

Details of Primary Planning Areas

Planning Area	Details of Planning Areas	No of Schools in Planning Area	Page No
1	Seaham	9	21
2	Horden-Blackhall	7	21
3	Peterlee-Shotton	9	22
4	Thornley-Wheatley Hill	3	22
5	Wingate	3	23
7	Easington	2	23
8	Trimdon-Kelloe	4	23
9	Sedgefield-Fishburn	3	24
10	Spennymoor	9	24
11	Ferryhill	7	25
13	Bishop Auckland	12	25
15	West Auckland	3	26
16	Newton Aycliffe	10	26
17	Sildon	3	27
18	Stanley	16	27
19	Lanchester	3	28
20	Pelton-Ouston	6	28
21	Consett	15	29
22	Willington	5	30

Planning Area	Details of Planning Areas	No of Schools in Planning Area	Page No
<u>23</u>	Crook	5	<u>30</u>
<u>25</u>	Tow Law-Wolsingham	3	<u>31</u>
<u>26</u>	Howden and Witton	4	<u>31</u>
<u>27</u>	Weardale	5	<u>31</u>
<u>28</u>	Staindrop	8	<u>32</u>
<u>30</u>	Barnard Castle - Teesdale	6	<u>32</u>
<u>31</u>	Chester-le-Street Central	6	<u>33</u>
<u>32</u>	Sacrison	6	<u>33</u>
<u>33</u>	Belmont - Gilesgate	7	<u>34</u>
<u>34</u>	Sherburn	4	<u>34</u>
<u>35</u>	Framwellgate Moor	5	<u>35</u>
<u>36</u>	Durham East	3	<u>35</u>
<u>37</u>	Durham Central	4	<u>36</u>
<u>38</u>	Durham West	8	<u>36</u>
<u>39</u>	Brandon-Langley Moor	4	<u>37</u>
<u>40</u>	Chester le Street East	4	<u>37</u>

Details of Secondary Planning Areas

Planning Area	Details of Planning Areas	No of Schools in Planning Area	Page No
41	East Durham	5	39
42	North Durham	4	39
43	Wear Valley	2	40
44	Teesdale	2	40
45	Sedgefield	2	40
46	Central Durham	5	41
48	Chester le Street	2	41
49	Bishop Auckland	3	42
50	West Durham	2	42
51	South West Durham	3	42

PRIMARY SCHOOLS - PROJECTED ROLLS

Forecast Figures based on October 2023 School Census

PLANNING AREA 1: SEAHAM

SCHOOL	Type	Nursery	Capacity	2023-2024	2024-2025	2025-2026	2026-2027	2027-2028	2028-2029	2029-2030	2030-2031	2031-2032	2032-2033	2033-2034	2034-2035	2035-2036	2036-2037	2037-2038	2038-2039
Ropery Walk Primary	P		315	255	237	232	226	205	199	184	185	187	182	185	189	196	196	196	196
New Seaham Academy	P		266	241	227	229	222	216	219	217	217	231	228	239	245	252	252	252	252
Westlea Primary	P	Y	266	224	220	229	221	207	214	220	215	217	224	233	245	252	259	266	266
Sea View Primary	P	Y	345	257	237	219	210	199	200	211	217	232	238	247	266	273	280	287	287
Seaham Trinity Primary	P	Y	420	363	344	333	326	313	302	282	267	267	266	271	278	278	278	278	278
Ribbon Academy	P	Y	600	430	423	417	386	385	387	384	373	367	365	368	371	378	378	378	378
St. Cuthbert's RCVA Primary, Seaham	P		210	200	197	198	198	186	182	175	169	164	168	171	175	182	182	182	189
St. Mary Magdalen RCVA Primary	P		300	307	307	305	290	275	269	259	252	247	243	247	252	252	252	259	259
St. Joseph's RCVA Primary, Murton	P		210	161	145	139	131	121	119	122	116	124	124	125	126	126	126	126	126
PA Total			2932	2438	2337	2301	2210	2107	2091	2054	2011	2036	2038	2086	2147	2189	2203	2224	2231

PLANNING AREA 2: HORDEN-BLACKHALL

SCHOOL	Type	Nursery	Capacity	2023-2024	2024-2025	2025-2026	2026-2027	2027-2028	2028-2029	2029-2030	2030-2031	2031-2032	2032-2033	2033-2034	2034-2035	2035-2036	2036-2037	2037-2038	2038-2039
Dene House	P		350	302	297	292	293	285	277	270	269	269	276	277	278	280	282	286	287
Cotsford Primary	P		210	186	181	178	169	157	149	136	132	125	128	127	126	126	126	126	126
Yohden Primary	P		270	154	145	140	135	127	126	124	120	120	128	127	126	126	126	126	126
Hesleden Primary	P	Y	133	88	85	88	88	86	78	74	73	76	76	76	77	77	77	77	77
Blackhall Primary	P	Y	360	257	244	242	234	217	200	190	183	190	190	190	192	192	192	192	192
St. Joseph's RCVA Primary, Blackhall	P		105	66	66	61	71	64	63	60	56	55	55	55	56	56	56	56	56
Our Lady Star of the Sea RCVA Primary	P		119	105	94	96	100	96	91	90	84	85	86	85	84	84	91	91	91
PA total			1547	1158	1112	1097	1090	1032	984	944	917	920	939	937	939	941	950	954	955

PLANNING AREA 3: PETERLEE - SHOTTON

SCHOOL	Type	Nursery	Capacity	2023-2024	2024-2025	2025-2026	2026-2027	2027-2028	2028-2029	2029-2030	2030-2031	2031-2032	2032-2033	2033-2034	2034-2035	2035-2036	2036-2037	2037-2038	2038-2039
Seascape Primary	P	Y	357	249	246	253	240	240	234	222	217	223	225	232	231	231	238	238	245
Acre Rigg Academy	J		300	252	247	242	254	242	231	227	214	226	230	237	248	252	260	264	268
Acre Rigg Infant	I	Y	192	205	186	180	163	165	164	171	180	186	192	198	204	207	213	219	222
South Hetton Primary	P	Y	198	174	169	169	165	151	154	153	157	148	152	150	154	154	154	154	154
Shotton Primary	P	Y	399	239	251	247	237	218	206	207	213	205	210	207	213	213	213	213	213
Howletch Lane Primary	P	Y	399	325	308	300	298	287	287	289	294	305	311	319	335	342	352	360	367
Shotton Hall Primary	P		350	355	352	354	351	337	332	335	334	337	339	342	357	357	364	368	371
Our Lady of Lourdes RCVA Primary	P		168	159	151	154	153	142	139	137	137	136	139	137	140	140	140	140	140
Our Lady of the Rosary RCVA Primary	P	Y	315	211	187	176	175	166	171	168	180	192	197	199	208	210	212	215	219
PA total			2678	2169	2097	2075	2036	1948	1918	1909	1926	1958	1995	2021	2090	2106	2146	2171	2199

PLANNING AREA 4: THORNLEY - WHEATLEY HILL

SCHOOL	Type	Nursery	Capacity	2023-2024	2024-2025	2025-2026	2026-2027	2027-2028	2028-2029	2029-2030	2030-2031	2031-2032	2032-2033	2033-2034	2034-2035	2035-2036	2036-2037	2037-2038	2038-2039
Thornley Primary	P	Y	210	130	116	107	115	120	117	117	121	125	126	124	123	123	123	123	123
Wheatley Hill Community Primary	P	Y	315	366	364	346	321	300	288	266	252	239	240	238	238	238	238	238	242
St. Godric's RCVA Primary, Thornley	P		105	66	66	68	63	64	65	70	69	72	72	71	77	77	77	77	77
PA total			630	562	546	521	499	484	470	453	442	436	438	433	438	438	438	438	442

PLANNING AREA 5: WINGATE

SCHOOL	Type	Nursery	Capacity	2023-2024	2024-2025	2025-2026	2026-2027	2027-2028	2028-2029	2029-2030	2030-2031	2031-2032	2032-2033	2033-2034	2034-2035	2035-2036	2036-2037	2037-2038	2038-2039
Wingate Primary	P		359	351	347	350	351	342	342	346	351	359	364	361	364	364	364	364	364
Hutton Henry C of E Primary	P		56	61	54	56	59	57	50	52	56	55	55	55	56	56	56	56	56
St. Mary's RCVA Primary, Wingate	P		84	69	71	65	70	66	61	56	54	55	56	56	56	56	56	56	56
PA total			499	481	472	471	480	465	453	454	461	469	475	472	476	476	476	476	476

PLANNING AREA 7: EASINGTON

SCHOOL	Type	Nursery	Capacity	2023-2024	2024-2025	2025-2026	2026-2027	2027-2028	2028-2029	2029-2030	2030-2031	2031-2032	2032-2033	2033-2034	2034-2035	2035-2036	2036-2037	2037-2038	2038-2039
Easington Colliery Primary	P		567	515	520	527	526	519	533	533	547	549	553	563	585	594	601	601	606
Easington C of E Primary	P		147	135	150	156	154	154	159	155	155	145	151	151	154	161	161	161	161
PA total			714	650	670	683	680	673	692	688	702	694	704	714	739	755	762	762	767

PLANNING AREA 8: TRIMDON – KELLOE

SCHOOL	Type	Nursery	Capacity	2023-2024	2024-2025	2025-2026	2026-2027	2027-2028	2028-2029	2029-2030	2030-2031	2031-2032	2032-2033	2033-2034	2034-2035	2035-2036	2036-2037	2037-2038	2038-2039
Bluebell Meadow Primary	P	Y	420	177	173	160	162	144	153	160	164	161	168	168	175	175	175	175	175
Kelloe Primary	P	Y	147	122	118	121	126	110	111	113	105	104	103	102	105	105	105	105	105
Deaf Hill Primary	P	Y	161	133	127	124	120	110	100	98	97	98	102	102	105	105	105	105	105
St. William's RCVA Primary	P		126	116	113	106	99	97	99	102	101	98	103	104	105	105	105	105	105
PA total			854	548	531	511	507	461	463	473	467	461	476	476	490	490	490	490	490

PLANNING AREA 9: SEDGEFIELD – FISHBURN

SCHOOL	Type	Nursery	Capacity	2023-2024	2024-2025	2025-2026	2026-2027	2027-2028	2028-2029	2029-2030	2030-2031	2031-2032	2032-2033	2033-2034	2034-2035	2035-2036	2036-2037	2037-2038	2038-2039
Fishburn Primary	P	Y	210	116	107	113	107	114	113	107	109	110	107	110	105	105	105	105	105
Sedgefield Primary	P		209	211	215	214	202	203	199	194	190	185	184	187	185	185	185	185	185
Hardwick Primary	P	Y	210	215	221	221	220	219	223	225	228	231	234	242	245	245	245	245	245
PA total			629	542	543	548	529	536	535	526	527	526	525	539	535	535	535	535	535

PLANNING AREA 10: SPENNYMOOR

SCHOOL	Type	Nursery	Capacity	2023-2024	2024-2025	2025-2026	2026-2027	2027-2028	2028-2029	2029-2030	2030-2031	2031-2032	2032-2033	2033-2034	2034-2035	2035-2036	2036-2037	2037-2038	2038-2039
Middlestone Moor Primary	P	Y	266	244	245	262	267	273	283	297	297	318	319	321	329	329	329	336	336
North Park Primary	P	Y	266	229	227	230	221	213	211	207	210	212	213	214	215	215	218	218	218
Rosa Street Primary	P		210	185	191	194	192	192	196	196	190	188	192	191	192	192	195	195	198
Byers Green Primary	P		112	72	65	67	73	75	73	76	81	86	87	84	84	84	84	84	84
Kirk Merrington Primary	P		175	165	172	183	179	182	184	186	187	187	189	195	196	196	196	196	196
Tudhoe Colliery Primary	P		210	210	206	214	211	217	219	223	223	226	225	224	231	231	231	231	231
Springmoor Grange Primary	P		620	319	328	330	336	337	342	354	356	353	353	355	357	357	357	357	361
King Street Primary	P		210	189	186	194	196	200	201	212	216	222	222	223	228	228	228	231	231
St. Charles RCVA Primary	P		210	207	206	211	209	211	211	216	217	217	218	217	224	224	224	224	224
PA total			2289	1820	1826	1885	1884	1900	1920	1967	1977	2009	2018	2024	2056	2056	2062	2072	2079

PLANNING AREA 11: FERRYHILL

SCHOOL	Type	Nursery	Capacity	2023-2024	2024-2025	2025-2026	2026-2027	2027-2028	2028-2029	2029-2030	2030-2031	2031-2032	2032-2033	2033-2034	2034-2035	2035-2036	2036-2037	2037-2038	2038-2039
Chilton Academy	P	Y	420	268	256	258	255	252	257	257	251	267	272	278	280	280	280	280	280
Ferryhill Station Primary	P		112	68	71	69	68	69	65	66	68	66	67	69	70	70	70	70	70
Dean Bank Primary and Nursery	P	Y	210	173	167	161	156	150	145	147	144	146	146	147	147	147	147	147	147
Cleves Cross Primary	P	Y	210	209	209	208	202	204	202	203	202	201	201	203	203	203	203	203	203
Broom Cottages Primary	P	Y	300	248	243	243	245	244	236	226	227	234	233	235	234	234	234	234	234
West Cornforth Primary	P	Y	210	203	198	200	195	189	184	178	176	175	173	173	175	175	175	175	175
St. Michael's C of E Aided Primary	P		119	108	106	98	98	98	96	95	93	91	90	90	91	91	91	91	91
PA total			1581	1277	1250	1237	1219	1206	1185	1172	1161	1180	1182	1195	1200	1200	1200	1200	1200

PLANNING AREA 13: BISHOP AUCKLAND

SCHOOL	Type	Nursery	Capacity	2023-2024	2024-2025	2025-2026	2026-2027	2027-2028	2028-2029	2029-2030	2030-2031	2031-2032	2032-2033	2033-2034	2034-2035	2035-2036	2036-2037	2037-2038	2038-2039
Victoria Lane Academy	P	Y	210	153	162	155	158	152	166	166	166	161	167	168	168	175	175	175	175
Etherley Lane Primary	P		345	226	218	198	193	195	187	180	185	183	184	188	191	191	193	193	193
Escomb Primary	P		204	182	182	169	160	158	154	146	141	143	145	144	147	147	147	147	147
Cockton Hill Infant School	I		175	164	159	145	132	119	125	128	141	141	141	141	141	141	141	141	141
Cockton Hill Junior School	J		240	199	192	195	207	211	199	187	169	167	172	174	184	184	184	184	184
St. Andrew's Primary	P	Y	210	153	163	156	152	141	141	131	120	109	111	111	112	112	112	112	112
St. Anne's C of E Primary	P		210	204	205	205	214	211	213	211	211	210	209	209	210	210	210	210	210
St. Wilfrid's RCVA Primary	P	Y	210	194	189	180	181	172	166	168	169	170	172	172	175	175	175	175	175
St. Chad's RCVA Primary	P		105	68	60	54	56	58	57	57	56	56	56	55	56	56	56	56	56
St. Joseph's RCVA Primary, Coundon	P		180	101	111	108	109	113	110	108	115	109	110	110	116	117	117	117	117
Prince Bishops Community Primary	P	Y	210	191	202	204	211	207	208	214	213	209	215	217	217	224	224	224	224
Woodhouse Community Primary	P	Y	210	181	174	169	166	169	163	163	163	162	164	164	168	168	168	168	168
PA total			2509	2016	2017	1938	1939	1906	1889	1859	1849	1820	1846	1853	1885	1900	1902	1902	1902

PLANNING AREA 15: WEST AUCKLAND

SCHOOL	Type	Nursery	Capacity	2023-2024	2024-2025	2025-2026	2026-2027	2027-2028	2028-2029	2029-2030	2030-2031	2031-2032	2032-2033	2033-2034	2034-2035	2035-2036	2036-2037	2037-2038	2038-2039
Oakley Cross Primary	P	Y	175	139	124	127	127	135	130	127	123	125	126	125	125	125	125	125	125
St. Helen Auckland Primary	P	Y	196	168	157	156	162	156	153	152	160	161	162	161	161	161	161	161	161
Copeland Road Primary	P		189	147	133	135	139	135	132	133	130	133	134	133	133	133	133	133	133
PA total			560	454	414	418	428	426	415	412	413	419	422	419	419	419	419	419	419

PLANNING AREA 16: NEWTON AYCLIFFE

SCHOOL	Type	Nursery	Capacity	2023-2024	2024-2025	2025-2026	2026-2027	2027-2028	2028-2029	2029-2030	2030-2031	2031-2032	2032-2033	2033-2034	2034-2035	2035-2036	2036-2037	2037-2038	2038-2039
Stephenson Way Academy	P	Y	385	315	300	298	289	280	269	263	264	270	274	274	273	273	273	273	273
St. Joseph's RCVA Primary, Newton Aycliffe	P	Y	150	90	85	78	75	76	73	69	68	69	70	70	70	70	70	70	70
Aycliffe Village Primary	P		196	157	151	146	140	139	135	131	126	125	126	126	126	126	126	126	126
Byerley Park Primary	P		210	204	200	201	199	201	197	196	193	195	202	203	203	203	203	203	203
Horndale Infant	I	Y	216	54	61	61	62	62	64	64	63	63	63	63	63	63	63	63	63
St Francis Junior School	J		164	111	94	91	82	76	80	79	82	82	84	84	84	84	84	84	84
Vane Road Primary	P		420	410	412	406	404	396	390	389	384	380	383	385	389	389	389	389	389
Sugar Hill Primary	P	Y	420	412	408	401	397	391	388	385	381	378	380	385	389	389	389	389	389
St. Mary's RCVA Primary, Newton Aycliffe	P		210	179	171	171	179	177	176	177	175	177	178	178	179	179	179	179	179
Woodham Burn Primary	P		330	241	228	215	215	209	208	207	192	194	196	196	196	196	196	196	196
PA total			2701	2173	2110	2068	2042	2007	1980	1960	1928	1933	1956	1964	1972	1972	1972	1972	1972

PLANNING AREA 17: SHILDON

SCHOOL	Type	Nursery	Capacity	2023-2024	2024-2025	2025-2026	2026-2027	2027-2028	2028-2029	2029-2030	2030-2031	2031-2032	2032-2033	2033-2034	2034-2035	2035-2036	2036-2037	2037-2038	2038-2039
Thornhill Primary	P		180	207	207	202	203	198	194	194	192	188	190	187	189	189	189	189	196
Timothy Hackworth Primary	P	Y	420	317	320	318	303	295	288	290	297	286	286	285	294	294	301	301	305
St. John's C of E (Aided) Primary	P	Y	210	207	206	207	205	210	211	218	220	227	228	237	238	245	245	252	252
PA total			810	731	733	727	711	703	693	702	709	701	704	709	721	728	735	742	753

PLANNING AREA 18: STANLEY

SCHOOL	Type	Nursery	Capacity	2023-2024	2024-2025	2025-2026	2026-2027	2027-2028	2028-2029	2029-2030	2030-2031	2031-2032	2032-2033	2033-2034	2034-2035	2035-2036	2036-2037	2037-2038	2038-2039
Shield Row Primary	P		251	160	166	159	156	157	151	147	136	125	126	125	126	126	126	126	126
Colliery Primary	P	Y	196	115	114	110	110	103	107	110	112	104	109	110	112	119	119	119	126
Catchgate Primary	P	Y	266	205	196	194	192	177	178	184	182	185	183	183	187	187	187	187	187
Annfield Plain Infant	I		120	76	81	87	85	73	72	72	75	75	75	75	75	75	75	75	75
Annfield Plain Junior	J		168	122	114	97	98	103	96	99	95	86	84	83	86	86	86	86	86
East Stanley Primary	P		280	197	184	179	178	175	169	163	151	154	155	154	154	154	154	154	154
South Stanley Infant	I	Y	180	100	86	89	81	90	89	90	90	90	90	90	90	90	90	90	90
South Stanley Junior	J		208	179	180	168	166	143	137	139	132	140	138	139	140	140	140	140	140
Burnside Primary	P	Y	210	148	144	133	132	125	130	124	127	124	125	126	126	126	126	126	126
Bloemfontein Primary	P		200	140	125	114	96	92	93	87	93	103	104	105	104	104	104	104	104
Burnopfield Primary	P	Y	364	336	331	329	315	306	297	285	288	285	281	286	282	282	283	289	289
St. Joseph's RCVA Primary, Stanley	P		210	202	200	195	193	188	186	181	177	173	174	173	175	175	175	175	175
St. Patrick's RCVA primary, Dipton	P		175	145	140	135	135	129	125	122	127	125	124	124	130	130	133	133	133
St. Mary's RCVA Primary, South Moor	P		139	90	80	73	70	73	69	72	74	77	77	77	77	77	77	77	77
Tanfield Lea Primary	P		346	294	291	288	272	272	270	277	274	263	269	275	280	287	287	294	294
Greenland Community Primary	P		357	345	322	310	302	281	271	261	253	260	257	259	261	261	261	261	261
PA total			3670	2854	2754	2660	2581	2487	2440	2413	2386	2369	2371	2384	2405	2419	2423	2436	2443

PLANNING AREA 19: LANCHESTER

SCHOOL	Type	Nursery	Capacity	2023-2024	2024-2025	2025-2026	2026-2027	2027-2028	2028-2029	2029-2030	2030-2031	2031-2032	2032-2033	2033-2034	2034-2035	2035-2036	2036-2037	2037-2038	2038-2039
Burnhope Primary	P	Y	105	80	68	66	57	58	53	48	50	53	52	54	54	54	54	54	54
Lanchester EP Primary	P	Y	420	400	393	381	359	342	339	322	308	295	294	299	308	308	308	308	308
All Saints RCVA Primary	P		206	170	153	147	131	119	120	111	112	115	115	118	119	119	119	119	119
PA total			731	650	614	594	547	519	512	481	470	463	461	471	481	481	481	481	481

PLANNING AREA 20: PELTON – OUSTON

SCHOOL	Type	Nursery	Capacity	2023-2024	2024-2025	2025-2026	2026-2027	2027-2028	2028-2029	2029-2030	2030-2031	2031-2032	2032-2033	2033-2034	2034-2035	2035-2036	2036-2037	2037-2038	2038-2039
Pelton Community Primary	P	Y	385	282	279	281	276	266	270	271	258	258	262	262	262	262	262	262	262
West Pelton Primary	P		105	60	61	63	64	65	61	61	56	56	56	56	56	56	56	56	56
Ouston Primary	P		300	221	225	221	226	225	217	217	204	204	208	209	210	210	210	210	210
Beamish Primary	P	Y	263	232	219	221	209	208	201	199	195	208	208	209	210	210	210	210	210
Roseberry Primary	P	Y	105	43	32	33	37	39	41	43	44	48	49	48	49	49	49	49	49
St. Benet's RCVA Primary	P	Y	210	197	200	199	200	200	202	205	201	200	203	203	203	210	210	210	210
PA total			1368	1035	1016	1018	1012	1003	992	996	958	974	986	987	990	997	997	997	997

PLANNING AREA 21: CONSETT

SCHOOL	Type	Nursery	Capacity	2023-2024	2024-2025	2025-2026	2026-2027	2027-2028	2028-2029	2029-2030	2030-2031	2031-2032	2032-2033	2033-2034	2034-2035	2035-2036	2036-2037	2037-2038	2038-2039
Bishop Ian Ramsey C of E (Aided) Primary	P		210	112	103	99	100	96	98	95	107	108	108	110	119	119	119	119	119
Shotley Bridge Primary	P		420	349	340	342	325	306	297	287	303	308	303	306	315	315	315	315	315
Leadgate Primary	P	Y	210	172	177	166	168	164	159	160	158	150	156	158	161	161	161	161	161
Castleside Primary	P		140	68	67	60	60	58	57	63	67	68	69	69	70	70	70	70	70
The Grove Primary	P	Y	175	174	167	163	161	154	149	142	140	143	148	145	147	147	147	147	147
Delves Lane Primary	P	Y	350	260	244	237	217	205	209	208	211	216	222	229	240	240	240	240	240
Moorside Primary	P	Y	182	109	107	104	105	95	92	86	86	85	86	83	84	84	84	84	84
Consett Infant and Nursery	I		171	157	167	162	158	146	148	151	157	158	158	159	161	161	161	161	161
Consett Junior School	J		214	226	236	230	230	236	231	228	221	216	218	219	223	223	223	223	223
Benfieldside Primary	P	Y	299	178	171	166	166	149	155	149	154	155	153	151	154	154	154	154	154
Ebchester C of E Primary	P		105	91	95	91	85	80	75	71	72	69	67	68	70	70	70	70	70
St. Mary's RCVA Primary, Blackhill	P		198	206	207	214	212	205	204	203	202	201	200	199	203	203	203	203	203
St. Pius X RCVA primary	P		105	87	88	82	81	74	76	74	75	71	71	69	70	70	70	70	70
St. Patrick's RCVA Primary, Consett	P	Y	402	364	372	363	354	341	343	341	336	325	332	332	343	343	343	343	343
Our Lady and St. Joseph's RCVA, Brooms	P		119	72	66	59	57	52	54	57	60	62	64	65	67	67	67	67	67
PA total			3300	2625	2607	2538	2479	2361	2347	2315	2349	2335	2355	2362	2427	2427	2427	2427	2427

PLANNING AREA 22: WILLINGTON

SCHOOL	Type	Nursery	Capacity	2023-2024	2024-2025	2025-2026	2026-2027	2027-2028	2028-2029	2029-2030	2030-2031	2031-2032	2032-2033	2033-2034	2034-2035	2035-2036	2036-2037	2037-2038	2038-2039
Hunwick Primary	P		203	102	96	94	89	92	95	93	93	97	97	95	98	98	98	98	98
Sunnybrow Primary	P		119	64	60	54	58	50	51	50	55	55	55	54	56	56	56	56	56
Willington Primary	P	Y	210	171	162	158	153	139	137	143	149	150	151	149	155	155	155	155	155
St. Stephen's C of E Primary	P	Y	194	192	194	192	189	186	184	181	186	180	180	177	182	182	182	182	182
Our Lady and St. Thomas RCVA Primary	P		140	107	113	108	105	105	105	105	105	96	96	95	98	98	98	98	98
PA total			866	636	625	606	594	572	572	572	588	578	579	570	589	589	589	589	589

PLANNING AREA 23: CROOK

SCHOOL	Type	Nursery	Capacity	2023-2024	2024-2025	2025-2026	2026-2027	2027-2028	2028-2029	2029-2030	2030-2031	2031-2032	2032-2033	2033-2034	2034-2035	2035-2036	2036-2037	2037-2038	2038-2039
Crook Primary	P	Y	420	327	315	297	288	273	267	260	267	262	261	264	270	270	270	270	270
Hartside Primary	P		208	203	203	202	201	199	199	199	197	196	194	196	196	196	196	196	196
Peases West Primary	P	Y	119	86	93	94	88	86	85	87	85	77	76	77	77	77	77	77	77
Stanley (Crook) Primary	P		133	134	125	127	126	123	122	120	120	119	118	119	119	119	119	119	119
St. Cuthbert's RCVA Primary, Crook	P	Y	210	142	136	125	126	117	118	118	118	122	122	124	126	126	126	126	126
PA total			1090	892	872	845	829	798	791	784	787	776	771	780	788	788	788	788	788

PLANNING AREA 25: TOW LAW – WOLSINGHAM

SCHOOL	Type	Nursery	Capacity	2023-2024	2024-2025	2025-2026	2026-2027	2027-2028	2028-2029	2029-2030	2030-2031	2031-2032	2032-2033	2033-2034	2034-2035	2035-2036	2036-2037	2037-2038	2038-2039
Tow Law Millennium Primary	P		140	93	86	80	81	78	76	74	75	78	77	77	77	77	77	77	77
Wolsingham Primary	P	Y	209	158	147	145	151	136	140	138	142	145	141	142	147	147	147	147	147
Blessed John Duckett RCVA Primary	P	Y	84	56	60	63	63	68	70	75	73	70	69	69	70	70	70	70	70
PA total			433	307	293	288	295	282	286	287	290	293	287	288	294	294	294	294	294

PLANNING AREA 26: HOWDEN AND WITTON

SCHOOL	Type	Nursery	Capacity	2023-2024	2024-2025	2025-2026	2026-2027	2027-2028	2028-2029	2029-2030	2030-2031	2031-2032	2032-2033	2033-2034	2034-2035	2035-2036	2036-2037	2037-2038	2038-2039
Hamsterley Primary	P		42	34	31	34	36	35	37	36	34	35	34	34	35	35	35	35	35
Howden le Wear Primary	P		175	173	172	162	156	146	142	133	125	121	121	122	126	126	126	126	126
Witton le Wear Primary	P		105	99	94	89	85	84	80	72	73	76	76	76	77	77	77	77	77
Toft Hill Primary	P		182	191	201	189	195	183	184	175	172	164	166	164	168	168	168	168	168
PA total			504	497	498	474	472	448	443	416	404	396	397	396	406	406	406	406	406

PLANNING AREA 27: WEARDALE

SCHOOL	Type	Nursery	Capacity	2023-2024	2024-2025	2025-2026	2026-2027	2027-2028	2028-2029	2029-2030	2030-2031	2031-2032	2032-2033	2033-2034	2034-2035	2035-2036	2036-2037	2037-2038	2038-2039
Frosterley Primary	P		105	38	34	29	29	29	28	28	28	26	27	27	28	28	28	28	28
St. John's Chapel Primary	P		56	20	20	20	18	17	14	13	12	13	13	14	14	14	14	14	14
Wearhead Primary	P		56	16	14	11	11	11	12	12	11	13	13	14	14	14	14	14	14
Stanhope Barrington C of E Primary	P	Y	147	132	116	105	95	90	82	76	73	78	80	80	84	84	84	84	84
PA total			364	206	184	165	147	147	136	129	124	130	133	135	140	140	140	140	140

PLANNING AREA 28: STAINDROP

SCHOOL	Type	Nursery	Capacity	2023-2024	2024-2025	2025-2026	2026-2027	2027-2028	2028-2029	2029-2030	2030-2031	2031-2032	2032-2033	2033-2034	2034-2035	2035-2036	2036-2037	2037-2038	2038-2039
Ramshaw Primary	P		77	59	63	59	63	54	56	55	55	54	55	55	56	56	56	56	56
Butterknowle Primary	P		84	53	51	49	44	38	39	38	39	38	39	40	42	42	42	42	42
Woodland Primary	P		84	24	25	25	25	23	25	22	23	19	20	20	21	21	21	21	21
Cockfield Primary	P	Y	119	86	88	89	89	89	88	85	80	78	80	81	84	84	84	84	84
Evenwood C of E Primary	P	Y	119	78	75	84	88	87	83	81	82	84	85	84	84	84	84	84	84
Gainford C of E primary	P		112	48	43	44	47	47	44	50	53	56	56	56	56	56	56	56	56
Ingleton C of E Primary	P		84	44	45	42	49	50	52	52	52	49	49	49	49	49	49	49	49
Staindrop C of E Primary	P		210	160	157	157	157	162	162	165	160	156	157	158	160	160	160	160	160
PA total			889	552	547	549	562	550	549	548	544	534	541	543	552	552	552	552	552

PLANNING AREA 30: BARNARD CASTLE – TEESDALE

SCHOOL	Type	Nursery	Capacity	2023-2024	2024-2025	2025-2026	2026-2027	2027-2028	2028-2029	2029-2030	2030-2031	2031-2032	2032-2033	2033-2034	2034-2035	2035-2036	2036-2037	2037-2038	2038-2039
Cotherstone Primary	P		84	54	53	49	47	46	51	48	44	42	42	41	42	42	42	42	42
Middleton in Teesdale Primary	P	Y	193	78	74	77	69	69	72	73	76	77	74	80	77	77	77	77	77
Montalbo Primary	P	Y	210	195	201	203	203	195	190	190	187	182	179	179	182	182	182	182	182
Green Lane C of E Primary	P		240	201	198	187	178	171	168	167	168	167	165	165	168	168	168	168	168
Bowes Hutchinson C of E (Aided) Primary	P		70	48	50	54	50	51	54	56	62	64	63	62	63	63	63	63	63
St. Mary's RCVA Primary, Barnard Castle	P		105	89	86	84	83	90	93	92	93	93	92	93	95	95	95	95	95
PA total			902	665	662	654	630	622	628	626	630	625	615	620	627	627	627	627	627

PLANNING AREA 31: CHESTER-LE-STREET CENTRAL

SCHOOL	Type	Nursery	Capacity	2023-2024	2024-2025	2025-2026	2026-2027	2027-2028	2028-2029	2029-2030	2030-2031	2031-2032	2032-2033	2033-2034	2034-2035	2035-2036	2036-2037	2037-2038	2038-2039
Red Rose Primary	P		315	308	306	302	295	283	273	267	265	264	268	268	273	273	273	273	273
Cestria Primary	P		420	407	401	400	401	386	380	374	368	374	373	373	378	378	385	385	385
Bullion Lane Primary	P	Y	336	237	255	251	240	237	238	238	234	228	228	229	231	231	231	231	231
Newker Primary	P	Y	420	354	340	325	330	312	296	295	299	312	312	315	322	322	322	322	322
Chester-le-Street C of E Primary	P		416	232	220	208	208	206	207	210	203	208	215	216	218	218	218	218	218
St. Cuthbert's RCVA Primary, Chester-le-Street	P		210	194	193	192	186	185	182	178	174	174	173	173	175	175	175	175	176
PA total			2117	1732	1715	1678	1660	1609	1576	1562	1543	1560	1569	1574	1597	1597	1604	1604	1605

PLANNING AREA 32: SACRISTON

SCHOOL	Type	Nursery	Capacity	2023-2024	2024-2025	2025-2026	2026-2027	2027-2028	2028-2029	2029-2030	2030-2031	2031-2032	2032-2033	2033-2034	2034-2035	2035-2036	2036-2037	2037-2038	2038-2039
Sacriston Academy	P	Y	350	179	193	191	186	185	185	184	180	179	181	180	182	182	182	182	182
Edmondsley Primary	P	Y	175	153	143	148	143	141	150	146	141	146	145	145	147	147	147	147	147
Witton Gilbert Primary	P		203	194	204	203	201	197	201	205	204	202	203	202	203	203	203	203	203
Langley Park Primary	P	Y	244	148	141	148	144	135	141	143	140	138	136	139	140	140	140	140	140
Nettlesworth Primary	P		119	112	108	110	104	98	97	96	95	96	95	96	98	98	98	98	98
St. Bede's RCVA Primary	P		112	95	91	100	98	100	99	96	94	98	99	98	98	98	98	98	98
PA total			1203	881	880	900	876	856	873	870	854	859	859	860	868	868	868	868	868

PLANNING AREA 33: BELMONT – GILESGATE

SCHOOL	Type	Nursery	Capacity	2023-2024	2024-2025	2025-2026	2026-2027	2027-2028	2028-2029	2029-2030	2030-2031	2031-2032	2032-2033	2033-2034	2034-2035	2035-2036	2036-2037	2037-2038	2038-2039
Belmont Cheveley Park Primary	P		208	211	197	191	183	171	165	160	158	161	159	157	161	161	161	161	161
Laurel Avenue Primary	P	Y	112	88	81	82	80	75	74	74	72	75	74	74	77	77	77	77	77
Durham Gilesgate Primary	P	Y	210	135	141	138	133	128	126	131	133	128	128	127	129	129	129	129	129
Belmont C of E Primary	P		364	268	254	237	219	196	186	179	183	180	178	177	182	182	182	182	182
St. Hild's C of E (Aided) Primary	P	Y	210	126	126	122	120	110	109	109	112	110	109	108	112	112	112	112	112
St. Joseph's RCVA Primary, Gilesgate	P		157	93	78	75	70	64	57	54	59	67	66	66	68	68	68	68	68
St. Thomas More RCVA Primary	P		105	97	92	90	89	83	79	72	68	67	66	64	66	66	66	66	66
PA total			1366	1018	969	935	894	827	796	779	785	788	780	773	795	795	795	795	795

PLANNING AREA 34: SHERBURN

SCHOOL	Type	Nursery	Capacity	2023-2024	2024-2025	2025-2026	2026-2027	2027-2028	2028-2029	2029-2030	2030-2031	2031-2032	2032-2033	2033-2034	2034-2035	2035-2036	2036-2037	2037-2038	2038-2039
Pittington Primary	P	Y	208	183	192	186	183	175	168	172	168	167	167	164	168	168	168	168	168
Ludworth Primary	P	Y	105	83	82	80	77	72	74	73	69	70	70	68	70	70	70	70	70
Sherburn Primary	P		233	153	167	158	161	147	138	137	143	139	139	137	140	140	140	140	140
West Rainton Primary	P		168	142	142	150	137	137	133	135	133	129	125	126	126	133	133	133	133
PA total			714	561	583	574	558	531	513	517	513	505	501	495	504	511	511	511	511

PLANNING AREA 35: FRAMWELLGATE MOOR

SCHOOL	Type	Nursery	Capacity	2023-2024	2024-2025	2025-2026	2026-2027	2027-2028	2028-2029	2029-2030	2030-2031	2031-2032	2032-2033	2033-2034	2034-2035	2035-2036	2036-2037	2037-2038	2038-2039
Newton Hall Infant	I		180	141	137	122	120	120	122	123	125	125	125	125	125	125	125	125	125
Finchale Primary	P		210	215	221	214	210	202	198	197	194	191	193	194	196	196	196	196	196
Framwellgate Moor Primary	P	Y	315	300	322	313	307	301	299	292	289	285	288	289	291	291	291	291	291
Durham Blue Coat Junior School	J		240	234	230	235	224	207	199	187	183	184	187	188	190	190	190	190	190
St. Godric's RCVA Primary, Durham	P		210	210	213	209	204	199	196	194	191	191	193	194	196	196	196	196	196
PA total			1155	1100	1123	1093	1065	1029	1014	993	982	976	986	990	998	998	998	998	998

PLANNING AREA 36: DURHAM EAST

SCHOOL	Type	Nursery	Capacity	2023-2024	2024-2025	2025-2026	2026-2027	2027-2028	2028-2029	2029-2030	2030-2031	2031-2032	2032-2033	2033-2034	2034-2035	2035-2036	2036-2037	2037-2038	2038-2039
Cassop Primary	P		147	114	104	112	111	115	114	116	119	124	124	123	126	126	126	126	126
Coxhoe Primary	P		357	331	349	364	383	379	373	376	376	378	379	380	386	386	386	386	386
Bowburn Primary	P	Y	540	325	330	338	344	333	332	335	335	337	336	335	336	336	336	336	336
PA total			1044	770	783	814	838	827	819	827	830	839	839	838	848	848	848	848	848

PLANNING AREA 37: DURHAM CENTRAL

SCHOOL	Type	Nursery	Capacity	2023-2024	2024-2025	2025-2026	2026-2027	2027-2028	2028-2029	2029-2030	2030-2031	2031-2032	2032-2033	2033-2034	2034-2035	2035-2036	2036-2037	2037-2038	2038-2039
Neville's Cross Primary	P		294	292	279	278	273	267	257	255	253	264	265	266	270	270	270	270	270
St. Oswald's C of E (Aided) Primary and Nursery	P	Y	140	138	143	144	144	140	139	140	142	144	147	147	147	147	147	147	147
Shincliffe C of E Primary	P		210	204	204	212	212	209	210	207	207	204	201	200	203	203	203	203	203
Durham St. Margaret's C of E Primary	P		420	391	393	391	387	377	370	363	372	367	368	368	371	371	371	371	371
PA total			1064	1025	1019	1025	1016	993	976	965	974	979	981	981	991	991	991	991	991

PLANNING AREA 38: DURHAM WEST

SCHOOL	Type	Nursery	Capacity	2023-2024	2024-2025	2025-2026	2026-2027	2027-2028	2028-2029	2029-2030	2030-2031	2031-2032	2032-2033	2033-2034	2034-2035	2035-2036	2036-2037	2037-2038	2038-2039
New Brancepeth Primary	P	Y	124	112	111	100	98	99	96	87	89	89	90	91	91	91	91	91	91
Bearpark Primary	P		119	89	90	89	88	91	91	90	90	88	89	90	91	91	91	91	91
Esh Winning Primary	P	Y	291	254	253	253	242	242	234	237	233	234	230	233	234	234	234	234	234
Esh C of E (Aided) Primary	P		105	85	83	89	88	84	89	92	93	96	95	97	98	98	98	98	98
St. Michael's RCVA Primary	P		196	152	149	159	149	145	144	138	145	139	138	140	140	140	140	140	140
Our Lady Queen of Martyrs RCVA Primary	P		103	69	61	59	61	58	57	59	64	70	69	70	70	70	70	70	70
St. Joseph's RCVA Primary, Ushaw Moor	P		105	89	84	78	74	74	71	74	75	82	83	84	84	84	84	84	84
Silver Tree Primary	P		210	168	176	168	177	172	168	174	167	159	160	161	161	161	161	161	161
PA total			1253	1018	1007	995	977	965	950	951	956	957	954	966	969	969	969	969	969

PLANNING AREA 39: BRANDON - LANGLEY MOOR

SCHOOL	Type	Nursery	Capacity	2023-2024	2024-2025	2025-2026	2026-2027	2027-2028	2028-2029	2029-2030	2030-2031	2031-2032	2032-2033	2033-2034	2034-2035	2035-2036	2036-2037	2037-2038	2038-2039
Browney Academy	P		203	190	199	196	192	180	171	173	164	155	155	158	161	161	161	161	161
Langley Moor Primary	P		227	193	202	200	202	197	199	198	194	190	189	192	196	196	196	196	196
St. Patrick's RCVA Primary, Langley Moor	P		105	70	65	65	70	70	66	66	68	68	68	69	70	70	70	70	70
Brandon Community Primary	P	Y	385	258	263	257	259	246	227	228	231	227	226	230	235	235	235	235	235
PA total			920	711	729	718	723	693	663	665	657	640	638	649	662	662	662	662	662

PLANNING AREA 40: CHESTER LE STREET EAST

SCHOOL	Type	Nursery	Capacity	2023-2024	2024-2025	2025-2026	2026-2027	2027-2028	2028-2029	2029-2030	2030-2031	2031-2032	2032-2033	2033-2034	2034-2035	2035-2036	2036-2037	2037-2038	2038-2039
Lumley Infant and Nursery	I	Y	150	139	138	126	126	111	112	116	123	126	126	126	129	129	132	132	132
Lumley Junior School	J		196	180	187	193	187	188	176	165	160	152	154	156	165	166	166	169	170
Fencehouses Woodlea Primary	P	Y	202	190	188	194	193	188	189	188	191	186	180	188	189	189	189	189	189
Bournmoor Primary	P		171	87	78	82	79	78	79	86	83	86	84	84	91	91	91	91	91
PA total			719	596	591	595	585	565	556	555	557	550	544	554	574	575	578	581	582

SECONDARY SCHOOLS - PROJECTED ROLLS

(11-16 AGE RANGE ONLY)

Forecast Figures based on October 2023 School Census (11-16 numbers only)

PLANNING AREA 41: EAST DURHAM

School	11-16 Capacity	16-18 Capacity	2023-2024	2024-2025	2025-2026	2026-2027	2027-2028	2028-2029	2029-2030	2030-2031	2030-2031	2032-2033	2033-2034	2034-2035	2035-2036	2036-2037	2037-2038	2038-2039
Seaham High School	1200	N/A	1122	1160	1174	1180	1171	1194	1157	1131	1115	1065	1036	1003	988	978	998	999
Dene Academy	1077	N/A	634	650	701	686	672	677	654	643	649	613	571	550	524	521	531	541
The Academy at Shotton Hall	1261	N/A	1169	1205	1212	1183	1170	1162	1119	1118	1108	1087	1055	1032	1023	1031	1041	1061
Easington Academy	931	N/A	797	808	807	803	756	755	738	744	747	743	734	731	727	723	723	727
St. Bede's Catholic Comprehensive & Byron Sixth Form College	940	160	889	926	976	956	923	919	907	858	844	819	783	763	750	745	756	765
PA Total	5409	160	4611	4749	4870	4808	4692	4707	4575	4494	4463	4327	4179	4079	4012	3998	4049	4093

PLANNING AREA 42: NORTH DURHAM

School	11-16 Capacity	16-18 Capacity	2023-2024	2024-2025	2025-2026	2026-2027	2027-2028	2028-2029	2029-2030	2030-2031	2030-2031	2032-2033	2033-2034	2034-2035	2035-2036	2036-2037	2037-2038	2038-2039
North Durham Academy	1501	NA	999	1079	1109	1144	1151	1146	1055	991	941	885	838	813	798	779	790	792
Consett Academy	1500	200	1430	1428	1425	1439	1435	1452	1438	1448	1375	1334	1270	1240	1213	1231	1228	1239
Tanfield School	788	N/A	708	733	798	791	771	737	711	672	666	644	630	612	606	585	585	591
St. Bede's Catholic School and Sixth Form College Lanchester	1165	337	1173	1146	1155	1153	1172	1187	1177	1160	1133	1093	1048	1030	1011	999	1004	1013
PA Total	4954	737	4310	4386	4487	4527	4529	4522	4381	4271	4115	3956	3786	3695	3628	3594	3607	3635

PLANNING AREA 43: WEAR VALLEY

School	11-16 Capacity	16-18 Capacity	2023-2024	2024-2025	2025-2026	2026-2027	2027-2028	2028-2029	2029-2030	2030-2031	2030-2031	2032-2033	2033-2034	2034-2035	2035-2036	2036-2037	2037-2038	2038-2039
Parkside Academy	900	N/A	917	908	890	860	852	870	878	872	851	849	831	807	804	817	807	812
Wolsingham School	750	N/A	751	769	783	765	748	758	753	750	729	710	689	661	646	646	651	652
PA Total	1650	N/A	1668	1677	1673	1625	1600	1628	1631	1622	1580	1559	1520	1468	1450	1463	1458	1464

PLANNING AREA 44: TEESDALE

School	11-16 Capacity	16-18 Capacity	2023-2024	2024-2025	2025-2026	2026-2027	2027-2028	2028-2029	2029-2030	2030-2031	2030-2031	2032-2033	2033-2034	2034-2035	2035-2036	2036-2037	2037-2038	2038-2039
Teesdale School	915	90	662	663	672	686	682	662	656	642	618	603	588	593	592	600	592	601
Staindrop Academy	771	N/A	429	513	530	533	517	505	453	442	431	428	406	401	391	386	385	393
PA Total	1686	90	1091	1176	1202	1219	1199	1167	1109	1084	1049	1031	994	994	983	986	977	994

PLANNING AREA 45: SEDGEFIELD

School	11-16 Capacity	16-18 Capacity	2023-2024	2024-2025	2025-2026	2026-2027	2027-2028	2028-2029	2029-2030	2030-2031	2030-2031	2032-2033	2033-2034	2034-2035	2035-2036	2036-2037	2037-2038	2038-2039
Wellfield School	1011	N/A	912	939	956	975	980	995	997	984	964	934	893	868	854	848	850	862
Sedgefield Community College	975	N/A	986	1001	1012	1013	1008	1006	1003	989	968	963	949	927	926	935	929	930
PA Total	1986	N/A	1898	1940	1968	1988	1988	2001	2000	1973	1932	1897	1842	1795	1780	1783	1779	1792

PLANNING AREA 46: CENTRAL DURHAM

School	11-16 Capacity	16-18 Capacity	2023-2024	2024-2025	2025-2026	2026-2027	2027-2028	2028-2029	2029-2030	2030-2031	2030-2031	2032-2033	2033-2034	2034-2035	2035-2036	2036-2037	2037-2038	2038-2039
Belmont Community School	845	N/A	823	872	907	908	910	912	904	867	822	781	744	711	715	721	726	727
Framwellgate School Durham	1175	145	1123	1117	1160	1181	1200	1244	1242	1205	1172	1127	1053	1026	1027	1021	1026	1040
Durham Johnston Comprehensive	1310	343	1325	1350	1363	1371	1378	1385	1391	1394	1394	1394	1391	1381	1381	1381	1381	1384
St. Leonard's Catholic School	1125	306	1127	1081	1098	1096	1096	1099	1146	1106	1082	1035	993	961	958	955	961	967
Durham Academy	755	N/A	372	432	463	495	485	478	453	434	409	394	370	350	351	346	348	350
Durham Sixth Form Centre	N/A	1750	1619	1700	1716	1779	1849	1830	1822	1837	1822	1801	1800	1770	1709	1663	1622	1595
PA Total	5210	2544	6389	6552	6707	6830	6948	6948	6958	6843	6701	6532	6351	6199	6141	6087	6064	6063

PLANNING AREA 48: CHESTER-LE-STREET

School	11-16 Capacity	16-18 Capacity	2023-2024	2024-2025	2025-2026	2026-2027	2027-2028	2028-2029	2029-2030	2030-2031	2030-2031	2032-2033	2033-2034	2034-2035	2035-2036	2036-2037	2037-2038	2038-2039
Hermitage Academy	1050	265	898	909	955	950	967	965	954	911	897	869	823	790	789	772	786	792
Park View School	1200	300	1185	1199	1211	1220	1229	1239	1249	1252	1256	1235	1216	1197	1189	1177	1192	1202
PA Total	2250	565	2083	2108	2166	2170	2196	2204	2203	2163	2153	2104	2039	1987	1978	1949	1978	1994

PLANNING AREA 49: BISHOP AUCKLAND

School	11-16 Capacity	16-18 Capacity	2023-2024	2024-2025	2025-2026	2026-2027	2027-2028	2028-2029	2029-2030	2030-2031	2030-2031	2032-2033	2033-2034	2034-2035	2035-2036	2036-2037	2037-2038	2038-2039
Bishop Barrington School	900	N/A	625	621	68	710	683	727	709	665	616	606	576	553	536	536	535	546
King James 1 Academy	805	237	798	816	822	825	824	821	812	8/17	817	820	804	799	796	795	791	805
St. John's School and Sixth Form College	1175	355	1124	1109	1122	1124	1120	1108	1129	1115	1081	1066	1033	1017	1011	1017	1018	1033
PA Total	2880	592	2547	2546	2592	2659	2627	2656	2650	2597	2514	2492	2413	2369	2343	2348	2344	2384

PLANNING AREA 50: WEST DURHAM

School	11-16 Capacity	16-18 Capacity	2023-2024	2024-2025	2025-2026	2026-2027	2027-2028	2028-2029	2029-2030	2030-2031	2030-2031	2032-2033	2033-2034	2034-2035	2035-2036	2036-2037	2037-2038	2038-2039
Whitworth Park Academy	1370	N/A	935	1028	1082	1068	1071	1049	1024	1009	1006	983	966	974	989	992	1010	1014
Ferryhill Business and Enterprise College	836	N/A	769	768	800	811	825	8/31	840	840	834	821	808	789	779	777	781	780
PA Total	2206	N/A	1704	176	1882	1879	1896	1880	1864	1849	1840	1804	1774	1763	1768	1769	1791	1794

PLANNING AREA 51: SOUTH WEST DURHAM

School	11-16 Capacity	16-18 Capacity	2023-2024	2024-2025	2025-2026	2026-2027	2027-2028	2028-2029	2029-2030	2030-2031	2030-2031	2032-2033	2033-2034	2034-2035	2035-2036	2036-2037	2037-2038	2038-2039
UTC South Durham	300	300	284	305	278	285	287	287	287	287	287	287	287	287	287	287	287	287
Woodham Academy	1250	N/A	1038	1070	1108	1100	1103	1105	1113	1112	1112	1088	1065	1039	1026	1010	1017	1029
Greenfield Community College	918	N/A	671	637	654	667	643	631	626	599	572	546	532	525	520	527	529	536
PA Total	2468	300	1993	2012	2040	2052	2033	2023	2026	1998	1971	1921	1884	1851	1833	1824	1833	1852

Durham County Council Special School Provision

School	Age range	Special needs category	Number of places to be commissioned in Mainstream	Number of places to be commissioned in Post-16
Durham Trinity	2 - 19	Moderate Learning Difficulties (MLD), Severe Learning Difficulties (SLD), Profound and Multiple Learning Difficulties (PMLD) and Autistic Spectrum Disorder (ASD)	216	28
Elemore Hall (Residential)	11 - 16	Social, Emotional and Mental Health (SEMH)	200	0
Evergreen	2 - 11	Moderate Learning Difficulties (MLD), Severe Learning Difficulties (SLD), Profound and Multiple Learning Difficulties (PMLD) and Autistic Spectrum Disorder (ASD)	194	0
Hopewood Academy	2 - 19	Moderate Learning Difficulties (MLD), Severe Learning Difficulties (SLD), Profound and Multiple Learning Difficulties (PMLD) and Autistic Spectrum Disorder (ASD)	200	24
The Meadows	11 - 16	Social, Emotional and Mental Health (SEMH)	66	0
The Oaks	11 - 19	Moderate Learning Difficulties (MLD), Severe Learning Difficulties (SLD), Profound and Multiple Learning Difficulties (PMLD) and Autistic Spectrum Disorder (ASD)	307	40
The Croft	5 - 16	Moderate Learning Difficulties (MLD), Severe Learning Difficulties (SLD) and Autistic Spectrum Disorder (ASD)	240	0
Walworth (Residential)	5 - 11	Social, Emotional and Mental Health (SEMH)	88	0
Villa Real	2 - 19	Severe Learning Difficulties (SLD), Profound and Multiple Learning Difficulties (PMLD) and Autistic Spectrum Disorder (ASD)	110	20
The Woodlands (Pupil Referral Unit)	5 - 16	Pupils Permanently Excluded or At Risk Of Exclusion	N/A	
Personalised Alternative Curriculum Centre (PACC)	Year 10 and 11	Social, Emotional and Mental Health (SEMH)	Elemore Hall School arranges this provision for 20 children.	

EARLY YEARS PROVISION

Provider Name	Area	Type of Provision	Age Range
Adventure Valley	Brasside & Newton Hall	Childcare	0-5
Aycliffe Day Nursery	Midridge and Woodham Village	Childcare	0-10
Big Hands Little Hands	Leadgate	Childcare	0-5
Bishop Auckland College	Woodhouse Close	Childcare	0-5
Brandon Happytimes Daycare Limited	Brandon	Childcare	0-5
Chilton Happytimes	Chilton and Ferryhill Station	Childcare	0-5
Bright Star Nursery	Chester - Le Street North and East	Childcare	0-5
Buddies Nursery Limited	Bishop Auckland & South Church	Childcare	0-11
Busy Bears (Durham) Limited	Bearpark and Witton Gilbert	Childcare	0-11
Busy Bees (Durham) Limited	Framwellgate Moor & Pity me	Childcare	0-10
Byerley Road Pre-school	Shildon West	Childcare	0-10
Castle Kindergarten @Haswell	Shotton	Childcare	0-5
Castle Kindergaten @Sacriston	Sacriston	Childcare	0-5
Castle View Private Day Nursery Limited	Pelton	Childcare	0-5
Clever Clogs Day Nurseries Limited @Belmont	Belmont	Childcare	0-11
Clever Clogs Day Nurseries Limited @Bowburn	Durham South	Childcare	0-11
Conkers Life	Stocksfield	Childcare	0-8
Coundon & Leeholme Early Years Centre CIC	Coundon	Childcare	0-5
Craghead Childcare	Craghead and Southmoor	Childcare	0-5
Dawn Till Dusk Childcare	Barnard Castle West	Childcare	0-11
Daybreak Nursery	Evenwood	Childcare	0-5
Dean Bank Early Years	Ferryhill	Childcare	0-5
Deerness Valley Nursery	Deerness Valley	Childcare	0-8
Eden Garden Nursery	Ouston & Urpeth	Childcare	0-5
Emerald's Little Gems @ Stanley CC	Tanfield	Childcare	0-5

Provider Name	Area	Type of Provision	Age Range
Emerald's Little Gems @ Stanley House	Tanfield	Childcare	0-5
Emerald's Little Gems @Crook	Crook South	Childcare	0-5
Explorers	Evenwood	Childcare	0-8
First Steps	Lumley	Childcare	0-11
Flowerpots	Evenwood	Childcare	0-5
Green Lane Nursery and Child Care Centre	Barnard Castle East	Childcare	0-8
Happy Smiles	Leadgate & Medomsley	Childcare	0-5
Harbour View	Seaham	Childcare	0-5
Haystacks Nursery Ltd	Aycliffe East	Childcare	0-5
Hippitots Limited	Coxhoe	Childcare	0-5
House of Eden @Pioneering Care	Aycliffe North	Childcare	0-5
House of Eden Stephenson Way	Aycliffe West	Childcare	2-5
Howletch & Shotton Primary Childcare Ltd	Peterlee West	Childcare	0-5
Jack in the Box	Tudhoe	Childcare	0-5
Kelloe Phoenix Centre Ltd	Coxhoe	Childcare	0-11
Kids First	Nevilles Cross	Childcare	0-5
Kids Planet Day Nurseries Limited	Brandon	Childcare	0-5
Kidz Village	Annfield Plain	Childcare	0-5
Kidzone	Crook South	Childcare	0-10
Kirk Merrington Pre-school	Chilton	Childcare	2-5
Kirklands @Startforth	Barnard Castle West	Childcare	2-5
Little Acorns	Craghead and Southmoor	Childcare	0-9
Little Cubs	Aycliffe East	Childcare	0-5
Little Meadows	Barnard Castle West	Childcare	0-5
Little Pioneers	Seaham	Childcare	0-5
Little Stars @Sacriston	Sacriston	Childcare	2-5
Little Waves	Seaham	Childcare	2-5

Provider Name	Area	Type of Provision	Age Range
Little Stars @Willington	Willington	Childcare	2-5
Louisa Nursery	Tanfield	Childcare	0-5
Mains House	Chester le Street North and East	Childcare	0-5
Nellie's Day Nursery	Sildon West	Childcare	0-5
New Beginnings	Delves Lane and Consett South	Childcare	0-5
Nursery Time	Willington	Childcare	0-8
Pixley Dell	Tudhoe	Childcare	0-5
Playdays	Aycliffe East	Childcare	0-5
Playology @Peterlee	Peterlee West	Childcare	3-5
Playology Beach School	Seaham	Childcare	3-5
Positive Steps	Peterlee West	Childcare	0-5
Rainbow Nursery (Middlestone Moor) Ltd	Spennymoor & Middlestone	Childcare	0-5
Ribbon Daycare	Murton	Childcare	0-5
Seaham Kindergarten Limited	Seaham	Childcare	0-5
Selby Cottage Childcare	Chester le Street North and East	Childcare	0-5
Sildon Early Years	Sildon West	Childcare	0-5
Shining Stars	Coxhoe	Childcare	2-5
Shotley Bridge Nursery School	Tanfield	Childcare	0-5
Shotton & Howlatch Primary Childcare Ltd	Shotton	Childcare	0-5
St Oswald's Pre-school	Aycliffe West	Childcare	2-5
Stepping Stones Day Nursery (Durham)	Nevilles Cross	Childcare	0-5
Sunshine Day Nursery @Dene House	Peterlee East	Childcare	0-5
Sunshine Day Nursery @O'Neill Drive	Peterlee East	Childcare	0-5
Sunshine Day Nursery @Seascape	Peterlee East	Childcare	0-5
The Laurels Nursery	Gilesgate	Childcare	0-5
The Nursery	Consett North	Childcare	0-5
Tilly-Mints Nursery	Benfieldside	Childcare	0-5

Provider Name	Area	Type of Provision	Age Range
Tiny Tinkers		Childcare	0-5
Tots R Us	Deneside	Childcare	2-5
Trimdon Little Tykes	Trimdon	Childcare	0-5
Durham University Day Nursery	Elvet	Childcare	0-5
Westfield House	Crook North and Tow Law	Childcare	0-5
Wheatley Hill Community Nursery	Thornley	Childcare	0-5
Wingate Childcare	Wingate	Childcare	0-5
Witton Gilbert Nursery	Framwellgate Moor	Childcare	3-5
Woodlands Day Nursery	Brandon	Childcare	0-5
Yellow Wellies @Bishop Auckland	Woodhouse Close	Childcare	0-5
Yellow Wellies @Durham	Nevilles Cross	Childcare	0-5
York House Nursery	Bishop Auckland Town	Childcare	0-10
Bow School	Durham	Independent	2-5
Chorister School	Elvet	Independent	3-5
All Saints RC Primary Academy Pre-School	Lanchester	Governor Led	3-11
Annfield Plain Academy Infant School (Pre-school)	Annfield Plain	Governor Led	3-7
Aycliffe Village Primary Pre-School	Aycliffe West	Governor Led	3-11
Bearpark Primary Pre School	Bearpark and Witton Gilbert	Governor Led	2-11
Blackhall St Joseph's (Little J's)	Blackhall	Governor Led	3-11
Blessed John Duckett RCVA Academy Primary School	Tow Law	Governor Led	3-11
Bournmoor Primary Pre School	Bournmoor and Great Lumley	Governor Led	3-4
Bowes Hutchinson Pre School	Barnard Castle West	Governor Led	2-11
Butterknowle Primary Pre School	Evenwood	Governor Led	3-11
Cassop Primary Pre School	Cassop and Coxhoe	Governor Led	3-11
Chester-Le-Street Primary Pre-School	Chester Le street North	Governor Led	2-4
Cheveley Park Primary Pre School	Belmont	Governor Led	3-11
Cleves Cross Primary Pre School	Ferryhill	Governor Led	3-11

Provider Name	Area	Type of Provision	Age Range
Cockton Hill Infant Pre School	Woodhouse Close	Governor Led	2-7
Cotherstone Primary Pre-School	Barnard Castle West	Governor Led	3-11
Durham Gilesgate Pre School Nursery	Gilesgate	Governor Led	2-11
Easington Colliery Primary Pre School	Easington	Governor Led	3-11
Ferryhill Station Primary Pre School	Chilton	Governor Led	2-11
Frosterley Primary Pre School	Weardale	Governor Led	2-11
Gainford Primary Pre School	Barnard Castle East	Governor Led	3-11
Hartside Primary Academy Pre School	Crook North and Tow Law	Governor Led	2-11
Howden-le-Wear Primary Pre-School	Crook North and Tow Law	Governor Led	3-11
Hunwick Primary Pre-School	Willington & Hunwick	Governor Led	3-11
Ingleton CE Primary Pre School	Barnard Castle East	Governor Led	3-11
King Street Primary Pre School	Tudhoe	Governor Led	2-11
Neville's Cross Primary Pre-School	Nevilles Cross	Governor Led	3-11
Noah's Ark Nursery@Belmont Primary - Full Day Care & Nursery Ed	Belmont	Governor Led	2-11
Our Lady & St Thomas RC Primary Academy Pre-School	Willington & Hunwick	Governor Led	3-11
Ouston Primary Pre School	Ouston and Urpeth	Governor Led	3-11
Rosa Street Primary Academy Pre-School	Spennymoor	Governor Led	2-11
Sedgefield Primary Pre-School	Sedgefield`	Governor Led	3-11
Sherburn Primary Pre-School	Sherburn	Governor Led	3-11
Shield Row Primary Pre School	Tanfield	Governor Led	3-11
Shotley Bridge Primary School Pre School	Benfieldside	Governor Led	3-11
Shotton Hall Primary Pre School	Wingate	Governor Led	3-11
Silver Tree Primary Pre School	Deerness Valley	Governor Led	2-11
St Andrew's Primary Pre School	Coundon	Governor Led	3-11
St Anne's CE Primary Pre-School	Bishop Auckland Town	Governor Led	3-11
St Chad's Catholic Academy Pre School	West Auckland	Governor Led	3-11
St Charles RCVA Academy Pre School	Tudhoe	Governor Led	3-11

Provider Name	Area	Type of Provision	Age Range
St Godric's Academy Pre School Durham	Framwellgate & Newton Hall	Governor Led	3-11
St John's Chapel Primary Pre School	Weardale	Governor Led	2-11
St Joseph's Catholic Primary Pre School	Tanfield	Governor Led	3-11
St Joseph's RCVA Primary Pre School	Coundon	Governor Led	3-11
St Joseph's RCVA Primary Pre School	Aycliffe West	Governor Led	2-11
St Joseph's RCVA Primary Pre-School Academy Gilesgate	Belmont	Governor Led	3-11
St Mary's RC Primary Academy Pre-School 'Little Wrens' Nursery	Barnard Castle East	Governor Led	3-11
St Michael's CE Primary Pre School	Chilton	Governor Led	3-11
St Michael's RCVA Primary Academy Pre-School, Esh	Esh & Witton Gilbert	Governor Led	3-11
St Oswald's Ce Aided Primary Pre-School	Elvet & Gilesgate	Governor Led	3-11
St Thomas Moore	Belmont	Governor Led	3-11
St William's RCVA Primary Pre-School	Trimdon	Governor Led	3-11
Staindrop Primary Pre School	Barnard Castle East	Governor Led	3-11
Sunnybrow Primary Pre School	Willington	Governor Led	2-11
Tanfield Lea Primary Pre School	Tanfield	Governor Led	2-11
Thornhill Primary Pre-School	Shildon & Dene Valley	Governor Led	3-11
Tow Law Millenium Primary Pre School	Crook North and Tow Law	Governor Led	3-11
Wearhead Primary Pre School	Weardale	Governor Led	2-11
West Pelton Primary Pre School	Ouston and Urpeth	Governor Led	2-11
West Rainton Primary Pre School	Sherburn	Governor Led	2-11
Witton-le-Wear Primary Pre School	Witton-le-Wear	Governor Led	3-11
Woodham Burn Community Primary Pre School	Aycliffe West	Governor Led	3-11
Woodland Primary (Pre School)		Governor Led	3-11
Aclet Close Nursery	Bishop Auckland	Nursery School	2-5
Beechdale Nursery	Consett	Nursery School	3-5
Etherley Lane Nursery	Bishop Auckland	Nursery School	2-5
Horden Nursery	Horden	Nursery School	2-5

Provider Name	Area	Type of Provision	Age Range
Langley Moor Nursery	Langley Moor	Nursery School	3-5
Oxclose Nursery	Spennymoor	Nursery School	2-5
Rosemary Lane Nursery	Easington	Nursery School	2-5
Seaham Harbour Nursery	Seaham	Nursery School	2-5
Tudhoe Moor Nursery	Tudhoe	Nursery School	2-5
Wingate Nursery	Wingate	Nursery School	3-5

In addition, Early Years Education places are provided by 180 childminders throughout the county.